

MICHELIN
XZR



RADIAL
TIRE

INNOVATE FOR MORE



AIRPORT GROUND SUPPORT
SEGMENT



MICHELIN



1 SPEED

Capable of reaching up to 50 km/h ⁽¹⁾

The radial technology, tread pattern and specific rubber compounds allows for higher speeds.

2 SAFETY

Exceptional grip for short distance braking

The radial structure and multi-block pattern provides maximal ground footprint.

3 ROBUSTNESS

Limit machine downtime

Radial tubeless construction to prevent punctures and damages.

TIRE CHARACTERISTICS

ADDITIONAL INFORMATION



VEHICLE EQUIPMENT



The XZR tire is the solution for baggage tractors, urban machines and other high intensity forklift applications. Customers can expect an exceptional total value of ownership.

- Michelin Port Tires
Product Manager

⁽¹⁾ Characteristic of the product measured with the TKPH indicator.

LEARN MORE

ON THE WEB
business.michelin.co.uk

TESTIMONIALS
youtube.com/michelinearthmover

UPDATED MAY 2023

TOOLS

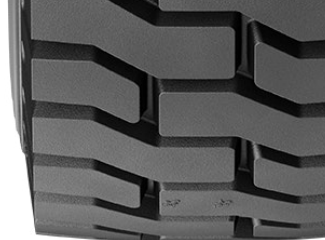
BEYOND ROAD SELECTOR
beyond-road.selector.michelingroup.com/mh

CONTACT

Please contact your local sales representative for more information.



TECHNICAL CHARACTERISTICS



DESCRIPTION	CAI [MSPN]	Max.dist./ hour km [mile]	Section width mm [in]	Outer diameter mm [in]	Static load radius mm [in]	Rolling circumference mm [in]	Tread depth mm [32rd]	Dual spacing mm [in]	Cap liter [gal]	Measuring recommended rim	Other approved rims mm [in] <small>See end of document for more options</small>
6.00 R9 121A5 TL	110206 68425	25 15.5	164 6.5	530 20.9	241 9.5	1605 63.2	10 12.6	192 7.6	18 4.8	4.00E	-

LOAD CAPACITY BASED ON INFLATION PRESSURE AND SPEED

Bar	Psi	6		8		10	
		87		116		145	
Machine - use kg - lbs		COUNTERBALANCED LIFT TRUCK - STEER WHEEL					
STATIC		1590	3506	1890	4167	2190	4829
10 km/h	6 mph	1370	3021	1630	3594	1890	4167
25 km/h	15 mph	1050	2315	1250	2756	1450	3197
35 km/h	22 mph	980	2161	1160	2558	1350	2977
40 km/h	25 mph	940	2073	1120	2470	1300	2867
50 km/h	31 mph	890	1962	1050	2315	1220	2690
Machine - use kg - lbs		COUNTERBALANCED LIFT TRUCK - LOAD WHEEL					
10 km/h	6 mph	1370	3021	1630	3594	1890	4167
25 km/h	15 mph	1370	3021	1630	3594	1890	4167
35 km/h	22 mph	1320	2911	1570	3462	1820	4013

MOUNTING ACCESSORIES AVAILABLE	Recommended rim	Tubeless bead seal [CAI]	Rubber ring [CAI]	Tube [CAI]	Flap [CAI]
	4.00E	100TL9 [102151]	N/A	9F [368957]	125 - 9 [242079]

6.50 R10 128A5 TL	110207 79365	25 15.5	184 7.2	578 22.8	264 10.4	1753 69	11 13.9	217 8.5	23 6.1	5.00F	5.50F
--------------------------	-----------------	------------	------------	-------------	-------------	------------	------------	------------	-----------	-------	-------

LOAD CAPACITY BASED ON INFLATION PRESSURE AND SPEED

Bar	Psi	6		8		10	
		87		116		145	
Machine - use kg - lbs		COUNTERBALANCED LIFT TRUCK - STEER WHEEL					
STATIC		1930	4256	2310	5094	2720	5998
10 km/h	6 mph	1660	3660	1990	4388	2340	5160
25 km/h	15 mph	1280	2822	1530	3374	1800	3969
35 km/h	22 mph	1180	2602	1420	3131	1670	3682
40 km/h	25 mph	1140	2514	1360	2999	1610	3550
50 km/h	31 mph	1080	2381	1290	2844	1520	3352
Machine - use kg - lbs		COUNTERBALANCED LIFT TRUCK - LOAD WHEEL					
10 km/h	6 mph	1660	3660	1990	4388	2340	5160
25 km/h	15 mph	1660	3660	1990	4388	2340	5160
35 km/h	22 mph	1600	3528	1910	4212	2250	4961

MOUNTING ACCESSORIES AVAILABLE	Recommended rim	Tubeless bead seal [CAI]	Rubber ring [CAI]	Tube [CAI]	Flap [CAI]
	5.00E	125TL10 [102183]	N/A	10F [007946]	140 - 10 [001969]

LEARN MORE

ON THE WEB
business.michelin.co.uk

TESTIMONIALS
youtube.com

UPDATED MAY 2023

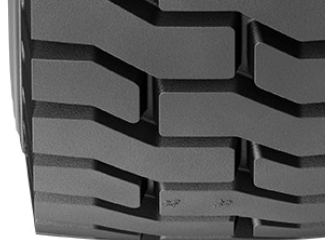
CONTACT

Please contact your local sales representative for more information.



MICHELIN

TECHNICAL CHARACTERISTICS



DESCRIPTION	CAI [MSPN]	Max.dist./ hour km [mile]	Section width mm [in]	Outer diameter mm [in]	Static load radius mm [in]	Rolling circumference mm [in]	Tread depth mm [32rd]	Dual spacing mm [in]	Cap liter [gal]	Measuring recommended rim	Other approved rims mm [in] <small>See end of document for more options</small>
7.00 R12 136A5 TL	110210 62234	25 15.5	193 7.6	661 26	302 11.9	2006 79	11 13.9	230 9.1	32 8.5	5.00S	-

LOAD CAPACITY BASED ON INFLATION PRESSURE AND SPEED

Bar *Psi* **6 87** **8 116** **10 145**

Machine - use kg - lbs COUNTERBALANCED LIFT TRUCK - STEER WHEEL

STATIC	2320	5116	2750	6064	3390	7475
10 km/h 6 mph	1990	4388	2370	5226	2920	6439
25 km/h 15 mph	1530	3374	1820	4013	2240	4939
35 km/h 22 mph	1420	3131	1690	3726	2080	4586
40 km/h 25 mph	1370	3021	1620	3572	2000	4410
50 km/h 31 mph	1290	2844	1530	3374	1890	4167

Machine - use kg - lbs COUNTERBALANCED LIFT TRUCK - LOAD WHEEL

10 km/h 6 mph	1990	4388	2370	5226	2920	6439
25 km/h 15 mph	1990	4388	2370	5226	2920	6439
35 km/h 22 mph	1920	4234	2280	5027	2800	6174

MOUNTING ACCESSORIES AVAILABLE	Recommended rim	Tubeless bead seal [CAI]	Rubber ring [CAI]	Tube [CAI]	Flap [CAI]
	5.00S	125TL12 [522788]	N/A	12H [625614]	135 - 12 [190171]

LEARN MORE

ON THE WEB
business.michelin.co.uk

TESTIMONIALS
youtube.com

UPDATED MAY 2023

CONTACT

Please contact your local sales representative for more information.

