



***X<sup>®</sup> MULTI<sup>™</sup> Z2***  
***WHEN SAFETY***  
***IS EVERYTHING***

***MICHELIN SOLUTIONS FOR EVERYDAY***  
***SAFER OPERATIONS IN ALL CONDITIONS***

- Good handling for your safety in all conditions
- Excellent resistance to accidental damage
- 24/7 Breakdown Michelin Active Assistance (MAA)

MICHELIN tyres, designed to deliver performance made to last





# MICHELIN X<sup>®</sup> MULTI<sup>™</sup> Z2

For Safer Goods Transportation

Long Haul

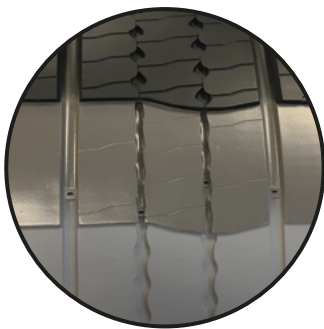
Regional

Urban

On/Off Road

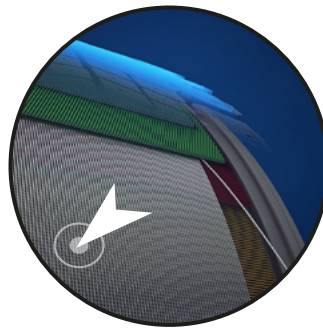
Recommended

Acceptable



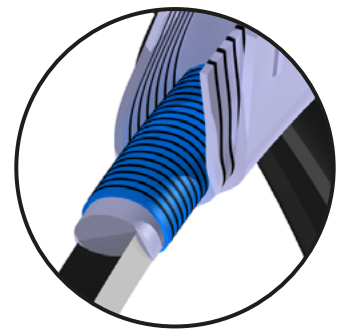
## SUPERB HANDLING

Self-regenerating tread design for better vehicle control in all driving conditions.



## ALWAYS IN CONTROL

Reinforced tread plies that help reduce the risk of sudden pressure loss for better vehicle control.



## DURABLE

Strengthened bead endurance for 10% reduction in tyre damages linked to repetitive long distance high-speed usage\*.

## MICHELIN RECOMMENDATIONS

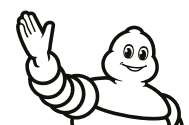
Dimension	LI/SS	PR	Recommended RIM (INCHES)	Measuring RIM	Original Tread Depth (mm)	Overall Diameter (mm)	Tread Width (mm)	Regroove Depth
11R22.5 X MULTI Z2	148/145L	16	7.50-8.25	8.25	14.5	1045	217	3
295/80 R22.5 X MULTI Z2	154/150L	18	8.25	8.25	15.0	1045	245	3

\* Based on internal MICHELIN Mileage Test conducted with multiple fleets in Australia for 295/80 R22.5 X Multi Z2 TL 154/150L (test tyre code XM327). Tyre fitments done in Q1 of 2016 and test completed in Q1 of 2018. Test comparative results are with reference to 295/80 R22.5 X Multi Z TL 152/149M.



**WARNING:** MICHELIN truck tyres are designed and optimized for specific conditions of usage which can be found in the MICHELIN Truck and Bus Tyre Technical Data Book and MICHELIN Truck and Bus Tyre Service Manual. It is therefore not advisable to use the product in conditions of use outside the parameters for which it was designed for. Operations outside these parameters are identified as abnormal usage and are not eligible for warranty considerations. Serious or fatal injury may result from tyre failure as a result of operating outside the tyres intended conditions of use. Refer to the MICHELIN Truck and Bus Tyre Technical Data Book (Asia Edition), MICHELIN Truck and Bus Tyre Service Manual, or consult your MICHELIN Truck Tyre professional for recommendations and procedures.

[www.michelin.com.au](http://www.michelin.com.au)



**MICHELIN**