

THE MICHELIN AGILIS CROSSCLIMATE TIRE



THE MICHELIN AGILIS CROSSCLIMATE TIRE FOR YOUR BUSINESS

Drive with confidence with Michelin's most durable heavy-duty commercial light truck tire ever—the Michelin Agilis CrossClimate tire. It resists curb scrub and offers excellent wet and snow traction. It is designed to improve tread life under heavy loads, the LT-Metric lasts up to 19% longer than competition under heavy loads.⁽¹⁾



LT-METRIC

C-METRIC

See the difference at business.michelinman.com

⁽¹⁾ Based on a treadwear test using tires in size LT265/70R17 121/118R on 2018 Ford F250 pickup trucks, loaded up to 9,800 lb (4,445 kg), vs. the following competitors. Actual on-road results may vary. Average projected mileage to wearout: Michelin Agilis CrossClimate: 24,500 miles (39,429 km), Bridgestone Duravis M700 HD: 20,600 miles (33,152 km), Firestone Transforce AT2: 22,000 miles (35,406 km), and Firestone Transforce HT : 19,800 miles (31,865 km).





BUILT TO HANDLE HEAVY WORKING CONDITIONS

"I am constantly having to replace the tires on my commercial light truck vehicles because they can't handle tough working conditions and wear quickly."

Problem solved:

Michelin Agilis CrossClimate lasts longer when loaded.⁽¹⁾

LOADED TREADWEAR LIGHT TRUCK⁽¹⁾

INDEXED MILEAGE

MICHELIN AGILIS CROSSCLIMATE LT
TIRE SIZE: LT265/70R17 121/118R



BRIDGESTONE DURAVIS M700HD
TIRE SIZE: LT265/70R17 121/118R



FIRESTONE TRANSFORCE AT2
TIRE SIZE: LT265/70R17 121/118R



FIRESTONE TRANSFORCE HT
TIRE SIZE: LT265/70R17 121/118R



(1) Based on a treadwear test using tires in size LT265/70R17 121/118R on 2018 Ford F250 pickup trucks, loaded to 9800 lbs (4445 kg), versus the following competitors. Actual on-road results may vary.

"I need a commercial light truck tire that I can trust will keep my employees safe when transporting and towing heavy loads."

Problem solved:

Michelin Agilis CrossClimate stops shorter in wet.⁽²⁾

WET PAVEMENT LIGHT TRUCK⁽²⁾

STOPPING DISTANCE

MICHELIN AGILIS CROSSCLIMATE LT
TIRE SIZE: LT265/70R17 121/118R



BRIDGESTONE DURAVIS M700HD
TIRE SIZE: LT265/70R17 121/118R



FIRESTONE TRANSFORCE AT2
TIRE SIZE: LT265/70R17 121/118R



FIRESTONE TRANSFORCE HT
TIRE SIZE: LT265/70R17 121/118R



(2) Based on internal wet braking tests from 50 MPH (80 KM/H) using tires in size LT265/70R17 121/118R on a 2018 Ford F-250 versus the following competitors. Actual on-road results may vary.

COUNT ON MICHELIN WHEN IT MATTERS MOST



EXTREME DURABILITY

Our most durable heavy duty light commercial truck tire – Professional-grade construction including CurbGard™ sidewall protectors that resist curb scrubbing in urban environments for improved sidewall durability.



IMPROVED WEAR ⁽¹⁾

The StabiliBlok™ design provides wider and longer tread blocks, to resist extreme torque while providing cool operating temperatures under full load at high speed. LT-metric lasts up to 19% longer under heavy loads than the competition.⁽¹⁾



CurbGard™
Sidewall
Protectors



StabiliBlok™
Technology



EXCELLENT WET TRACTION ^(2,3)

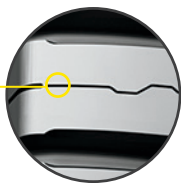
Offers shorter wet stopping distances than leading competitive tires. SipeLock™ provides hundreds of biting edges for improved wet and snow traction without sacrificing tread block stability.^(2,3)



SNOW TRACTION

All 16 LT sizes of Michelin Agilis CrossClimate tire meet the USTMA (U.S. Tire Manufacturers Association) snow traction performance requirements. Meets the Tire and Rubber Association of Canada (TRAC) requirements for severe snow traction.

SipeLock™



⁽¹⁾ Based on a treadwear test using tires in size LT265/70R17 121/118R on 2018 Ford F250 pickup trucks, loaded to 9800 lbs / 4,445 kilograms, versus the following competitors. Actual on-road results may vary. Average projected mileage to wearout: Michelin Agilis CrossClimate LT: 24,500 miles / 39,429 kilometers, Bridgestone Duravis M700 HD: 20,600 miles / 33,153 kilometers, Firestone Transforce AT2: 22,000 miles / 35,406 kilometers, and Firestone Transforce HT: 19,800 miles = 31,865 kilometers.

⁽²⁾ Based on internal wet braking tests from 50 mph / 80 km/h using tires in size LT265/70R17 121/118R on a 2018 Ford F-250 versus the following competitors. Actual on-road results may vary. Average distance to stop: Michelin Agilis CrossClimate LT: 147.5 ft / 45m, Bridgestone Duravis M700 HD: 151.6 ft / 46m, Firestone Transforce AT2: 158.0 ft / 48m, and Firestone Transforce HT: 169.3 ft / 52m.

⁽³⁾ Based on internal wet braking tests from 50 mph (80 KPH) using tires in size 235/65R16C 121/119R versus the following competitors. Average distance to stop: Michelin Agilis CrossClimate: 129 ft / 39 m, Continental VanContact A/S: 134 ft / 41 m, Firestone Transforce CV: 153 ft / 47 m, Goodyear Wrangler Fortitude HT: 159 ft / 48 m, Hankook Dynapro HT RH12: 149 ft / 45 m. Actual on-road results may vary.

CHOOSE THE MICHELIN AGILIS CROSSCLIMATE TIRE FOR:

- Durability and extended mileage
- Tow and carry heavy loads with confidence
- Protection from impact, punctures and aggression
- All-season tires for rough work conditions

LT-Metric

C-Metric



10

Wear
(Under Heavy Load)

9

Fuel Efficiency

7

Off-Road

8

Wear
(Under Light Load)

10

Wet/Snow Braking

10

Comfort

Ratings based upon performance in commercial light truck usage, particularly in towing and moving heavy loads.

EVERYONE HAS A STORY

"Finding out that the product not only was meeting the mileage and cost issue, but it was performing from a traction standpoint. Also, the ride and comfort feedback from the drivers using the product was positive."

KRISTOPHER G. BACHMANN, Branch Manager
Service Tire Truck Centers (STTC) Syracuse

"Transporting people we want to make sure those people are in a safe vehicle and these tires were just great."

DAVID J. BUTLER, President
TLC Ambulance Services

**EXPLORE AVAILABLE FITMENTS
FOR YOUR BUSINESS**

	AGILIS CROSSCLIMATE LT-Metric Tire	Defender LTX M/S Tire	AGILIS CROSSCLIMATE C-Metric Tire
LT215/85R16	X		
LT225/75R16	X		
LT235/85R16	X		
LT245/75R16	X		
LT265/75R16	X	X	
LT285/75R16		X	
LT225/75R17		X	
LT235/80R17	X		
LT245/70R17	X		
LT245/75R17	X	X	
LT265/70R17	X	X	
LT285/70R17	X	X	
LT265/70R18	X	X	
LT275/65R18	X	X	
LT275/70R18	X	X	
LT265/60R20	X	X	
LT275/65R20	X	X	
LT285/60R20	X	X	
185/60R15C			X
205/65R15C			X
195/75R16C			X
205/75R16C			X
225/75R16C			X
235/65R16C			X



FREQUENTLY ASKED QUESTIONS:



What is the difference between the Michelin Agilis CrossClimate C-Metric sizes vs. the LT sizes?

A: The C-metric convention can be thought of as the European equivalent of the LT-Metric. Just as LT-Metric describes a tire with a higher load rating and higher pressure than the equivalently sized P-Metric tire, C-Metric describes a tire with a higher load rating and higher pressure than the equivalently sized European Metric tire.



What are the main differences between the Michelin Agilis CrossClimate tire and the Michelin Defender LTX M/S tire? When should the Michelin Agilis CrossClimate tire be recommended vs. the Michelin Defender LTX tire?

A: The Michelin Agilis CrossClimate tire is **optimized for commercial usage**—which means usage by businesses carrying heavy loads, high-duty cycles, frequent towing, and constant or near-constant driving. The Michelin Defender LTX M/S tire is **optimized for personal usage**, including daily commuting, running errands, occasional trips to the home improvement store, tailgating and camping. Varying usage calls for different recommendations.



Why is the Michelin Agilis CrossClimate tire offered in two different tread designs?

A: The Michelin Agilis CrossClimate C-Metric tire was designed in Europe specifically for the European style vans that are also offered in the North American market. The C-Metric is a directional tread pattern. The LT sizes are non-directional and were designed by the North American Research and Development team to best suit ¾- and 1-ton pickups and vans. Both treads offer comparable performance.

To learn more please contact your Michelin Sales Representative or visit business.michelinman.com or business.michelin.ca.



TO FIND OUT MORE

US: business.michelinman.com

CA: business.michelin.ca



FIND US ON FACEBOOK

michelintruck.com



CONTACT US ON THE WEB

US: business.michelinman.com/contact-us

CA: business.michelin.ca/contact-us



CONTACT US BY TELEPHONE

US: **1-888-622-2306**

CA: **1-888-622-2306**