



LINE HAUL APPLICATIONS

THE MICHELIN X ONE LINE ENERGY D2 PRE-MOLD RETREAD



MICHELIN
RETREAD
TECHNOLOGIES

Our lowest rolling resistance heavy truck drive retread to date, for truckload, long haul transportation. Designed for industry-leading fuel savings to lower total cost of ownership while providing exceptional traction for driver confidence.

Line Haul	Regional	Urban	On/Off Road
-----------	----------	-------	-------------

Recommended Acceptable



BENEFITS:

Exceptional Fuel Savings

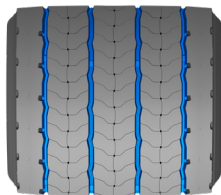
- New ultra-low rolling resistance levels designed to exceed SmartWay® and CARB requirements
- Compact Tread Design– designed for less tread squirm, providing energy conservation for fuel efficiency

Driver Confidence

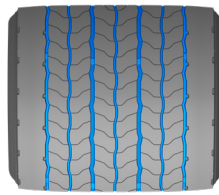
- Regenion Evolving Tread Design
 - Provides stability in all weather conditions
 - Delivers long lasting traction
 - Straight, pass-thru grooves with evolving features appear later in tread life for long-lasting traction.



New - 21/32nds



14/32nds



5/32nds

- Directional Design
 - Provides improved resistance to irregular wear for driver satisfaction and long tread life



DIRECTIONAL TIRE
(For 1st Half of Life)

Tread Size	Metric	375/425 ⁽³⁾
Tread Depth	Metric	16 mm
	Inches	21/32"

Lower Cost of Ownership

Designed to optimize Total Cost of Ownership with:

- Improved rolling resistance
- Mileage performance
- Inherent benefit of weight savings from New Generation Wide Based Singles

* Based on internal tests against SmartWay® requirements. For more information on SmartWay® verified technologies, go to US: www.epa.gov/smartway or CA: <https://www.nrcan.gc.ca>.

TO FIND OUT MORE
US: business.michelinman.com
CA: business.michelin.ca

FIND US ON FACEBOOK
[michelintruck](https://www.facebook.com/michelintruck)

CONTACT US ON THE WEB
US: business.michelinman.com/contact-us
CA: business.michelin.ca/contact-us

CONTACT US BY TELEPHONE
US: 1-888-622-2306
CA: 1-888-622-2306

Michelin North America Inc., One Parkway South, Greenville, SC 29615
Michelin North America (Canada) Inc., 2500 Daniel Johnson Blvd., Suite 500, Laval (QC) H7T 2P6
Copyright © 2023 MNA(CI). All rights reserved.
Copyright © 2023 Michelin North America, Inc. All rights reserved. An Equal Opportunity Employer PDF Only (08/23)

business.michelinman.com

