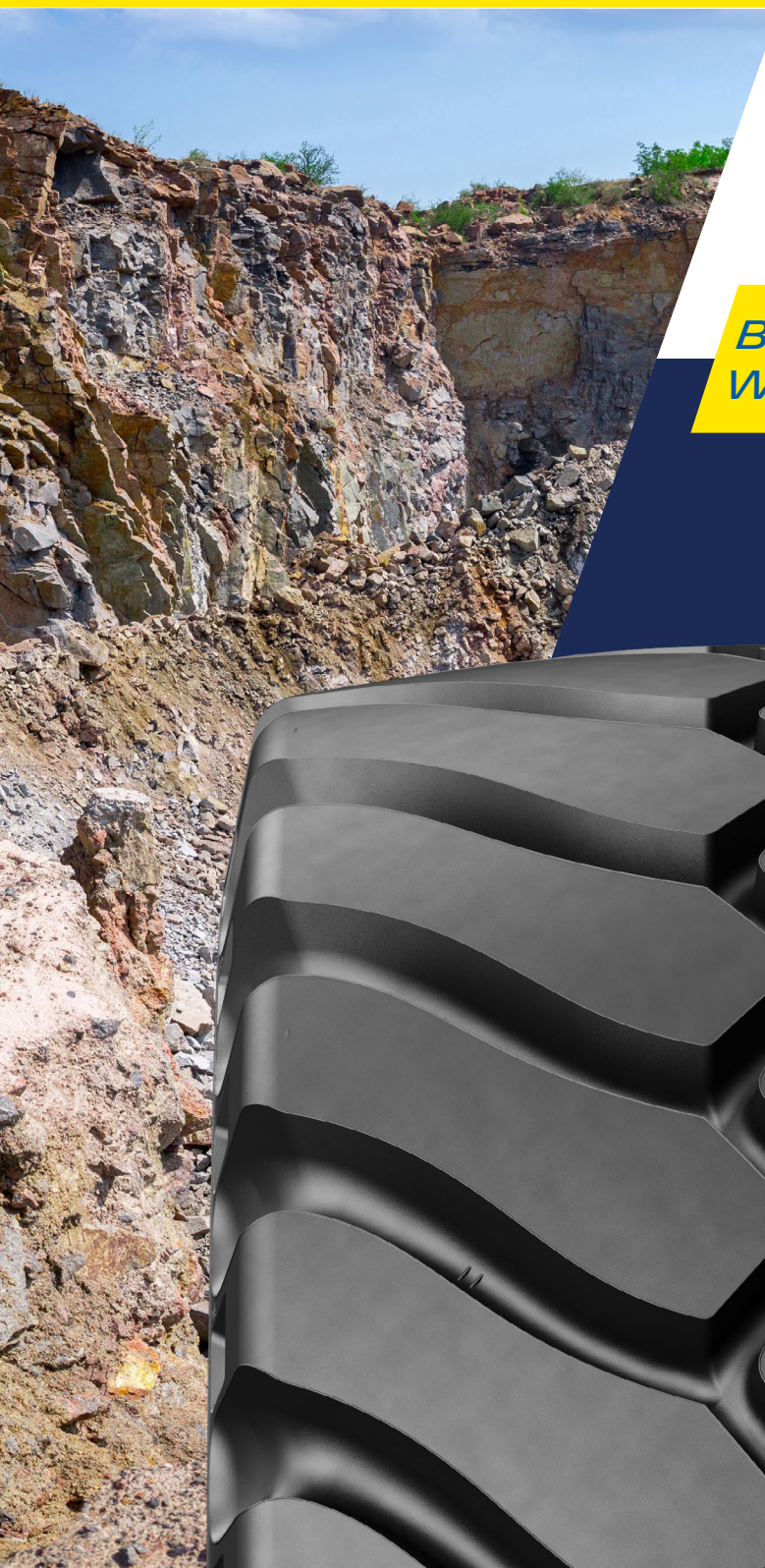


MICHELIN
XTRA POWER L4
A4 COMPOUND



RADIAL
TIRE



BE READY TO MOVE TONNAGE
WITH HIGH PROTECTION



CONSTRUCTION
SEGMENT



MICHELIN

MICHELIN XTRA POWER L4

A4 COMPOUND



1 PRODUCTIVITY

Increased load & speed at high temperatures for aggressive conditions.

Casing designed at 71 663 lbs / 32 500 kg at 6.2 mph or 10 km/h up to 47°C with 6 plies reinforced summit with an A4 tread compound.

2 ROBUSTNESS

Reinforced crown and sidewall resistance to aggression.

+20%⁽¹⁾ crown puncture resistance and +10%⁽¹⁾ of sidewall puncture resistance vs XLDD1**@6.5bar. +11%⁽²⁾ (+98 kg) extra material vs TXTL.

3 COMFORT

Optimized response to forward & reverse cycles in multi-purpose usages.

Non directional sculpture with an optimized void ratio.

TIRE CHARACTERISTICS

ADDITIONAL INFORMATION



VEHICLE EQUIPMENT



XTRA POWER L4 with special compound (A4) is designed for multi-purpose applications with high load capacity, high traction and at high aggression resistance.

MICHELIN GROUP -
Product Manager

⁽¹⁾ Internal comparison between 35/65 R33 XTRA Power L4 and 35/65 R33 XLD D1, measurements certified by the Michelin® Center of Technology, Ladoux, France.

⁽²⁾ Internal comparison between 35/65 R33 XTRA Power L4 and 35/65 R33 TXTL, measurements certified by the Michelin® Center of Technology, Ladoux, France.

LEARN MORE

ON THE WEB
pro.michelin.com

TESTIMONIALS
youtube.com

UPDATED JUNE 2023

CONTACT

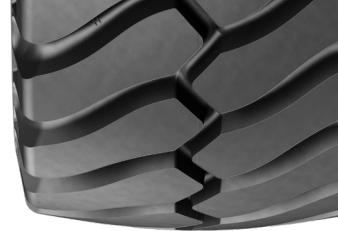
Please contact your local sales representative for more information.



MICHELIN

MICHELIN XTRA POWER L4

A4 COMPOUND



TECHNICAL CHARACTERISTICS

DESCRIPTION	CAI [MSPN]	Max. dist./ hour km [mile]	TKPH [TMPH]	e mm [in]	D mm [in]	R' mm [in]	RC mm [in]	Tread depth mm [32rd]	Dual spacing mm [in]	Cap liter [gal]	Measuring recommended rim	Other approved rims
35/65 R33 XTRA POWER A4 L4 TL***	097314	12 7.5 (if load per tire <=28 t) 10 6.2 (if load per tire >28 t)	-	912 35.9	2085 82.1	906 35.7	6208 244.4	60 75.6	-	1520 401.6	28.00/3.5	-
Bar	3	3.5	4	4.5	5	5.5	5.5	5.75	6.25	6.75	7	
<i>Psi</i>	44	51	58	65	73	80	83	91	98	102		
Machine - use kg - lbs	LOADER (if load per tire <=28 t)											
FRONT LADEN	17350 38257	19250 42446	21200 46746	23000 50715	25000 55125	26500 58433	28000 61740	-	-	-	-	-
REAR LADEN	13897 30643	15413 33986	16950 37375	18400 40572	20001 44102	21198 46742	22400 49392	-	-	-	-	-
Machine - use kg - lbs	LOADER (if load per tire >28 t)											
FRONT LADEN	-	-	-	-	-	-	-	30000 66150	31500 69458	32500 71663		
REAR LADEN	-	-	-	-	-	-	-	23991 52900	25188 55540	25985 57297		

LEARN MORE

ON THE WEB
pro.michelin.com

TESTIMONIALS
youtube.com

UPDATED JUNE 2023

CONTACT

Please contact your local sales representative for more information.

