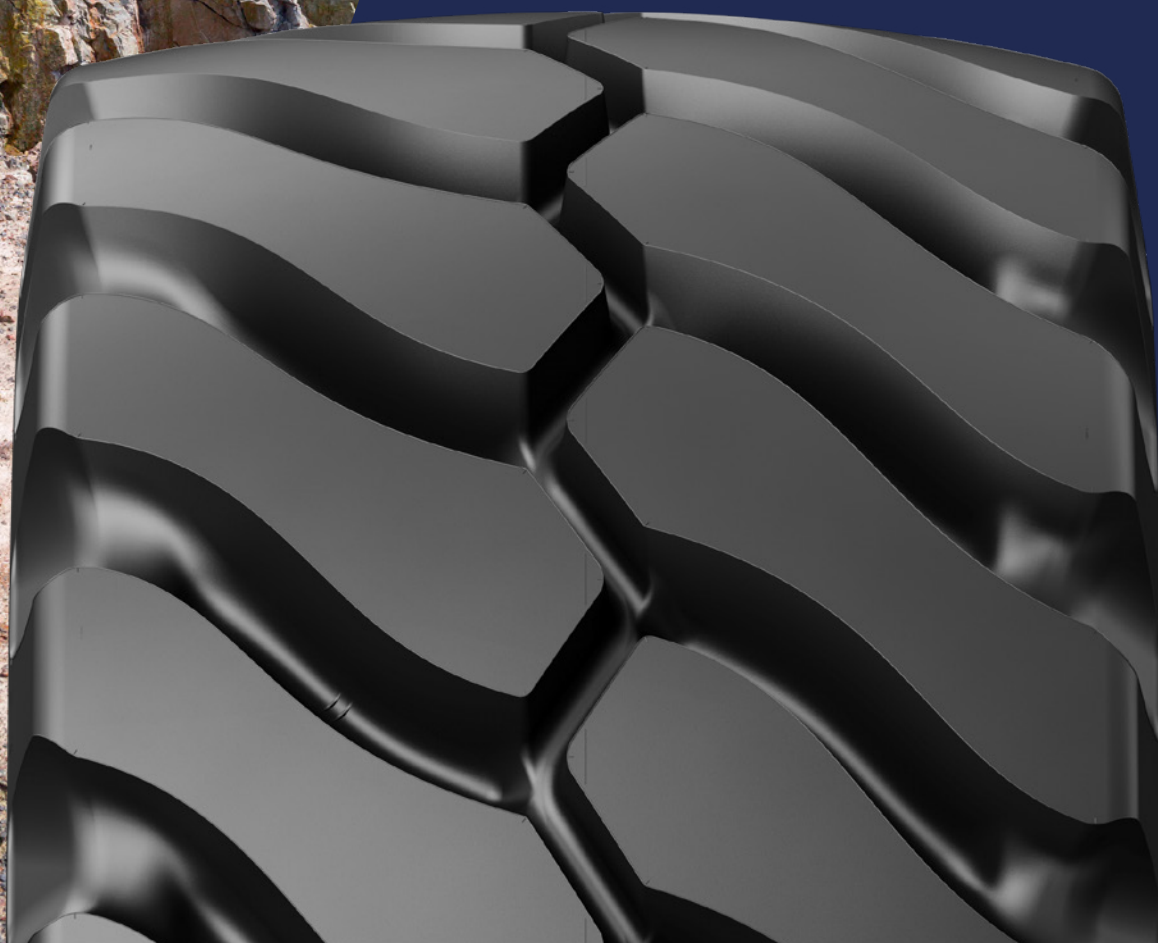


**MICHELIN**  
**XTRA**  
**POWER L5**



**RADIAL**  
**TIRE**

**FACEWORK**  
**AT FULL POWER**

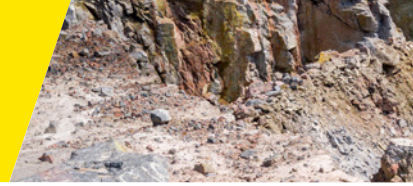


**CONSTRUCTION**  
**SEGMENT**



**MICHELIN**

# MICHELIN XTRA POWER L5



## 1 ROBUSTNESS

Designed with reinforced steel crown belt package  
Provides more tire crown protection <sup>(1)</sup>  
(up to + 30% steel plies) to respond to the strongest loading cycles

## 2 PRODUCTIVITY

Up to + 16% load capacity <sup>(1)</sup> at high temperature for aggressive conditions  
Casing designed with one more\* load rating vs XLDD2 range with up to 32500 kg/71663 lbs <sup>(2)</sup> and up to 10 km <sup>(2)</sup> in one hour / 6.2 miles in one hour at 47°

## 3 COMFORT

Non directional sculpture  
Provides an optimized response to forward and reverse cycle in face work application

## TIRE CHARACTERISTICS

## ADDITIONAL INFORMATION



### VEHICLE EQUIPMENT



MICHELIN XTRA POWER L5 is designed for aggressive usages on hard rock in face work application

MICHELIN GROUP -  
Product Manager

<sup>(1)</sup> Reference Michelin Technical Earthmover databook 2023. Internal comparison between Michelin XLDD2 35/65 R 33 and Michelin XTRA Power L5 35/65 R 33.

<sup>(2)</sup> Reference Michelin Technical Earthmover databook 2023. Technical data for Michelin XTRA POWER L5 35/65 R 33.

### LEARN MORE

ON THE WEB  
[pro.michelin.com](http://pro.michelin.com)

TESTIMONIALS  
[youtube.com](http://youtube.com)

UPDATED NOVEMBER 2023

### CONTACT

Please contact your local sales representative for more information.



