

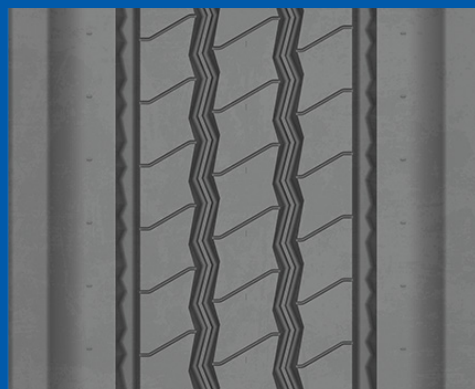


DESIGNED AS THE LATERAL STRESS  
AND HIGH SCRUB RESISTANT RETREAD  
SOLUTION TO DELIVER SUPERIOR TREAD  
LIFE FOR REGIONAL SPREAD AXLE TRAILER  
APPLICATIONS

## ***THE MICHELIN<sup>®</sup> X<sup>®</sup> MULTI T-SA PRE-MOLD RETREAD***

### **OUR PROMISE:**

If the MICHELIN<sup>®</sup> X<sup>®</sup> MULTI T-SA Pre-Mold Retread does not outperform the Bandag BTL-SA by 10%, Michelin will make it right!



**MICHELIN**

# THE MICHELIN®

## X® MULTI T-SA PRE-MOLD RETREAD

### Mileage Performance Promise

Let us prove the MICHELIN® X® MULTI T-SA Pre-Mold Retread is the product for you

*If the retread does not improve your mileage performance over the Bandag BTL-SA by 10%, we will reimburse you the difference in price.\**



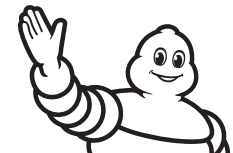
**MICHELIN**  
**RETREAD**  
**TECHNOLOGIES**

#### \*Terms and Conditions:

Valid only for MICHELIN® X® MULTI T-SA Pre-Mold Retread bought from an authorized dealer. Applicable to a maximum of 32 trailer retreads per bill-to location/customer. Valid for regional and spread axle trailer applications. You must assign a minimum of two similar trailers, operating in similar environments and routes. Applicable only versus the Bandag BTL-SA retread. Promise based on the comparison between the Bandag BTL-SA retread baseline and the MICHELIN® X® MULTI T-SA Pre-Mold Retread; proof of purchase with date and purchase price necessary for both the Bandag BTL-SA retread and the MICHELIN® X® MULTI T-SA Pre-Mold Retread products. Promise will pay in the form of a credit for the difference in purchase price of the MICHELIN® X® MULTI T-SA Pre-Mold Retread and the Bandag BTL-SA retread. Credit will be issued and all documentation must be validated by a Michelin Sales Representative. All Michelin limited warranty exclusions still apply. See warranty for details. Michelin reserves the right to modify or discontinue this program at any time for any reason without prior notice. All claims must be received by December 31st of the current calendar year. See your local Michelin dealer, your sales representative or go to [business.michelinman.com](https://business.michelinman.com) for more details.

[business.michelinman.com](https://business.michelinman.com)

Michelin North America, Inc., One Parkway South, Greenville, SC 29615  
Michelin North America (Canada), Inc., 2500 Daniel Johnson Blvd., Suite 500, Laval (QC) H7T 2P6  
© 2022 MNA(C). All rights reserved. (04/21)  
© 2022 Michelin North America, Inc. All rights reserved. An Equal Opportunity Employer (07/22)



**MICHELIN**