

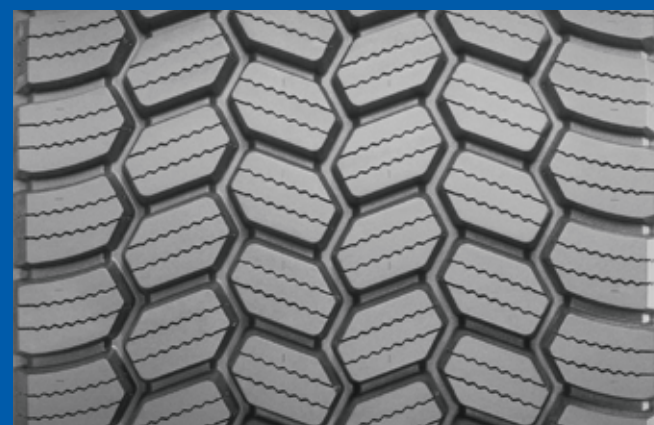


THE MICHELIN X ONE® XDS®2 PRE-MOLD RETREAD

The Michelin X ONE® XDS®2 Pre-Mold drive axle retread is designed for extreme winter conditions to promote drive confidence and security, while capitalizing on the enhanced fuel and weight savings of a new generation wide based tire.

OUR PROMISE:

If the Michelin X ONE® XDS®2 Pre-Mold Retread does not meet the traction needs of your drivers or the performance needs of your fleet, we will make it right!



MICHELIN

* **3PMSF & M+S certified**
Meets the USTMA (U.S. Tire Manufacturers Association) snow traction performance requirements. Meets the Tire and Rubber Association of Canada (TRAC) requirements for severe snow traction.

THE MICHELIN X ONE® XDS®2 PRE-MOLD RETREAD

Performance Promise

Let us prove the Michelin X ONE® XDS®2
Pre-Mold Retread is the product for you.

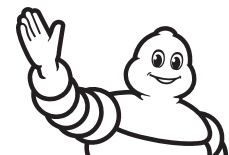
*If the retread does not meet the traction needs of
your drivers or the performance needs of your fleet,
we will reimburse the fleet the difference in the
retread with casing price versus the preferred drive
fitment.**

*Terms and Conditions:

Valid only for Michelin X ONE® XDS®2 Pre-Mold Retread bought from an authorized dealer. Applicable to a maximum of 40 drive retreads per bill-to location/customer. Promise based on the comparison between similar winter drive tires and retread with the exclusion of severe service and on/off road applications; proof of purchase with date and purchase price necessary for both the preferred competitor drive tire or retread and the Michelin X ONE® XDS®2 Pre-Mold Retread. Promise will pay in the form of a credit for the difference in purchase price of the Michelin X ONE® XDS®2 Pre-Mold Retread and the preferred competitor drive tire or retread. Credit will be issued and all documentation must be validated by a Michelin Sales Representative. All Michelin limited warranty exclusions still apply. See warranty for details. Michelin reserves the right to modify or discontinue this program at any time for any reason without prior notice.

All claims must be received by December 31st of the current calendar year. See your local Michelin dealer, your sales representative or go to business.michelinman.com for more details.

Michelin North America, Inc., One Parkway South, Greenville, SC 29615
Michelin North America (Canada), Inc., 2500 Daniel Johnson Blvd., Suite 500, Laval (QC) H7T 2P6
© 2023 MNA(C). All rights reserved.
© 2023 Michelin North America, Inc. All rights reserved. An Equal Opportunity Employer (05/23)



MICHELIN