



REGIONAL APPLICATIONS

# THE MICHELIN XZE2+ PRE-MOLD RETREAD



The Michelin XZE2+ Pre-Mold Retread is an all-position retread designed for regional applications requiring exceptional tire wear resistance.

|   |   |                                     |                                     |
|---|---|-------------------------------------|-------------------------------------|
| Line Haul                                       | <b>Regional</b>                                 | Urban                               | On/Off Road                         |
| <input checked="" type="checkbox"/> Recommended | <input checked="" type="checkbox"/> Recommended | <input type="checkbox"/> Acceptable | <input type="checkbox"/> Acceptable |

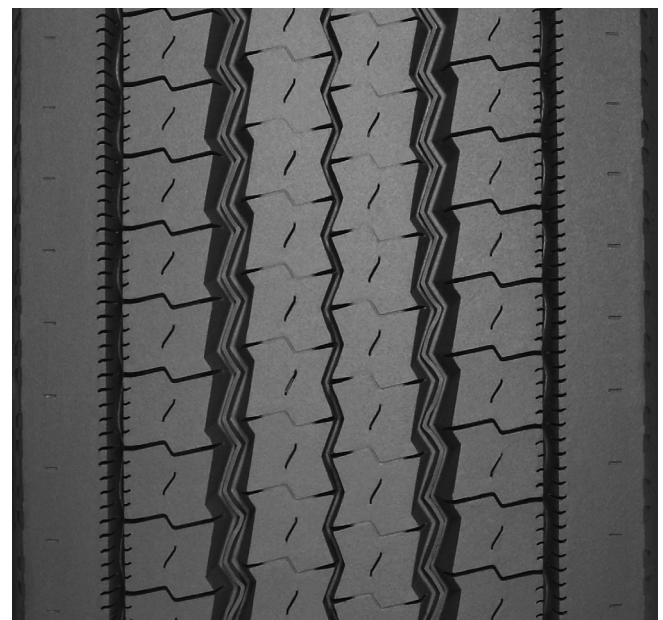
## BENEFITS:

### Optimized Tread Compound

- Performs well in high scrub and low scrub applications
- The Michelin XZE2+ Pre-Mold retread tire delivers improved wear performance over its predecessor.\*

### Enhanced Traction for Driver Confidence

- **Zig-zag Groove Wall**  
Provide optimized biting edges for traction
- **Center Grooves**  
Promotes water evacuation for improved traction in wet conditions



|             |        |        |     |     |
|-------------|--------|--------|-----|-----|
| Tread Size  | Metric | 240    | 250 | 260 |
| Tread Depth | Metric | 16 mm  |     |     |
|             | Inches | 20/32" |     |     |

\* Based on wear projections in an internal study of 32 tires in coach usage on drive axles, at 76% worn, 6/32" (4.76 mm) pull point, 315/80R22.5 casings with 260 mm XZE2+ Pre-mold retreads vs. 315/80R22.5 casings with 260 mm XZE2 Pre-mold retreads. Actual on-road results may vary.

TO FIND OUT MORE  
US: [business.michelinman.com](https://business.michelinman.com)  
CA: [business.michelin.ca](https://business.michelin.ca)

FIND US ON FACEBOOK  
[michelintruck](https://www.facebook.com/michelintruck)

CONTACT US ON THE WEB  
US: [business.michelinman.com/contact-us](https://business.michelinman.com/contact-us)  
CA: [business.michelin.ca/contact-us](https://business.michelin.ca/contact-us)

CONTACT US BY TELEPHONE  
US: 1-888-622-2306  
CA: 1-888-622-2306

Michelin North America Inc., One Parkway South, Greenville, SC 29615  
Michelin North America (Canada) Inc., 2500 Daniel Johnson Blvd., Suite 500, Laval (QC) H7T 2P6  
Copyright © 2024 MNA(C). All rights reserved.  
Copyright © 2024 Michelin North America, Inc. All rights reserved. An Equal Opportunity Employer PDF Only (06/24)

[business.michelinman.com](https://business.michelinman.com)

