

MICHELIN TECHNICAL DATA



MICHELIN MILITARY TYRES DATA BOOK

2022

May 2022 edition



MICHELIN TECHNICAL DATA

MILITARY

CONTENT CHAPTER

TECHNICAL INFORMATION *PAGE 3*

TYRE RANGE CHART *PAGE 4*

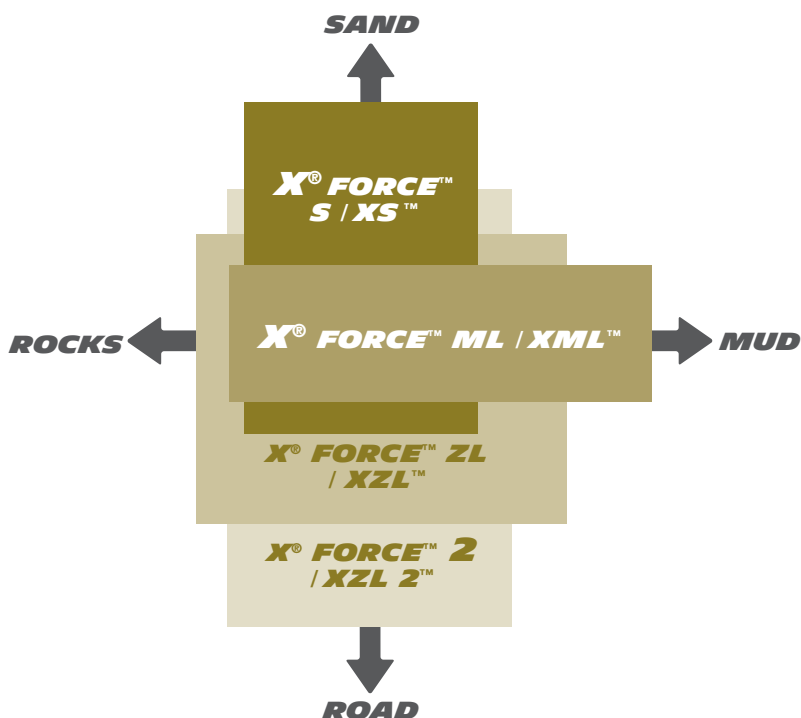
PRODUCT PRESENTATION *PAGE 5*

TYRE CHARACTERISTICS *PAGE 11*

TECHNICAL INFORMATION

<p>Being equipped with high-performing tyres</p>	<p>Relying on a specialised team</p>	<p>Benefiting from minimum running costs</p>
 <p>Designed and homologated according to demanding specifications, thanks to Michelin's partnership with military vehicle manufacturers.</p>	<p>Experienced in the requirements of military and off-road activity.</p> 	<p>High mileage potential, damage resistance and reliability of Michelin casings.</p> <p>Tyres specifically designed for military use with anti-FOD (Foreign Object Deposit) characteristics.</p> <p>Through the tyre's life, MICHELIN offers best value while offering high levels of damage resistance and survivability.</p>
<p>Choosing from a comprehensive range of products</p>	<p>Profiting from technological innovations from a global manufacturer</p>	<p>Counting on worldwide assistance</p>
<p>For all types of vehicles and all conditions of use.</p>	<p>All-terrain tyres on radial casings, patented tread patterns and concept solutions.</p>	<p>Availability of MICHELIN tyres and technical support on five continents.</p> 

MICHELIN MILITARY TYRE USE



SPEED / LOAD INDEX

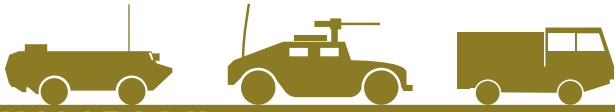
SPEED INDEX

SI	D	E	F	G	J	K	L	M	N
KM/H	65	70	80	90	100	110	120	130	140

LOAD INDEX

LI	KG	LI	KG	LI	KG	LI	KG
106	950	124	1600	142	2650	160	4500
107	975	125	1650	143	2725	161	4625
108	1000	126	1700	144	2800	162	4750
109	1030	127	1750	145	2900	163	4875
110	1060	128	1800	146	3000	164	5000
111	1090	129	1850	147	3075	165	5150
112	1120	130	1900	148	3150	166	5300
113	1150	131	1950	149	3250	167	5450
114	1180	132	2000	150	3350	168	5600
115	1215	133	2060	151	3450	169	5800
116	1250	134	2120	152	3550	170	6000
117	1285	135	2180	153	3650	171	6150
118	1320	136	2240	154	3750	172	6300
119	1360	137	2300	155	3875	173	6500
120	1400	138	2360	156	4000	174	6700
121	1450	139	2430	157	4125	175	6900
122	1500	140	2500	158	4250	176	7100
123	1550	141	2575	159	4375		

TYRE RANGE CHART



MILITARY



OFF ROAD



MICHELIN®
X® FORCE™ ZL/XZL



MICHELIN®
X® FORCE™ 2/XZL 2™



MICHELIN®
X® FORCE™ ZH



MICHELIN®
X® FORCE™ S/XS™



MICHELIN®
X® FORCE™ ML/XML™



MICHELIN TECHNICAL DATA

MILITARY

PRODUCT PRESENTATION

<i>MICHELIN X FORCE ZL/XZL</i>	<i>PAGE 6</i>
<i>MICHELIN X FORCE 2/XZL 2</i>	<i>PAGE 7</i>
<i>MICHELIN X FORCE ML/XML</i>	<i>PAGE 8</i>
<i>MICHELIN X FORCE S/XS</i>	<i>PAGE 9</i>
<i>MICHELIN X FORCE ZH</i>	<i>PAGE 10</i>

MICHELIN X FORCE ZL/XZL



**TOUGH AND RELIABLE
IN ALL CONDITIONS**



M+S



Military Vehicles

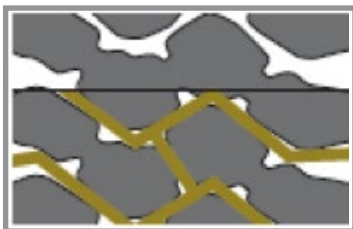
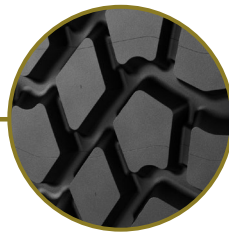


MOBILITY

Deep, open tread pattern and shoulders giving excellent traction

Designed to operate at varied pressures to match conditions of use

Designed to allow the use of chains, micro-siping and studs



REGROOVABLE



SAFETY

Designed to support low operating temperature allowing long distance to be covered at sustained speed.

Tread designed to be highly resistant to accidental tears and cuts

Rubber compounds highly resistant to abrasion and accidental damage

MICHELIN X FORCE 2/XZL 2

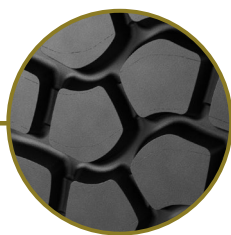


**THE TYRE OPTIMISED FOR
ROADS, TRACKS & SAND**

M+S



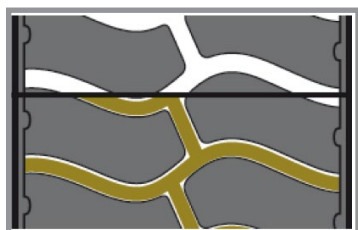
Military Vehicles



MOBILITY

Large contact patch for optimum flotation on sand

Tubeless construction compatible with Central Tyre Inflation Systems and Bead Locks



REGROOVABLE



SAFETY

Adapted tread compound allows up to 110km/h

Excellent handling on roads and tracks thanks to specific tread pattern

Robust casing

MICHELIN X FORCE ML/XML



**THE TYRE OPTIMISED
FOR MUD MOBILITY**



M+S

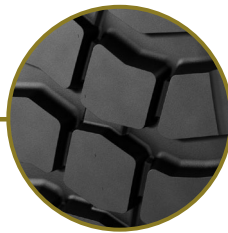


Military Vehicles



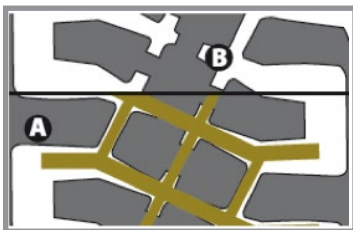
MOBILITY

Exceptional soft soil mobility, through self-cleaning capabilities and offset shoulder design



SAFETY

Patented design capable of running at specific reduced pressures to enhance off-road mobility



REGROOVABLE

MICHELIN X FORCE S/XS



**DESIGNED TO ASSURE
SAND MOBILITY**



M+S



Military Vehicles

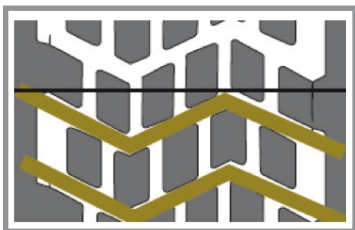


MOBILITY

Wide and flat tread for maximum flotation on sand

Low operating temperature, allowing long distance to be covered at a sustained speed

Excellent maneuverability



REGROOVABLE



SAFETY

Resistance to cuts and chipping

Flexible casing and tread pattern for being driven at low pressures

Rigid shoulders to ensure optimum steering on roads and tracks

MICHELIN X FORCE ZH



**ROBUSTNESS AND
TRACTION ON WORKSITES
AND QUARRIES**



M+S



Military Vehicles

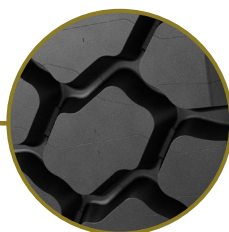


BUSINESS EFFICIENCY

Good vehicle mobility & uptime

Excellent resistance to damage

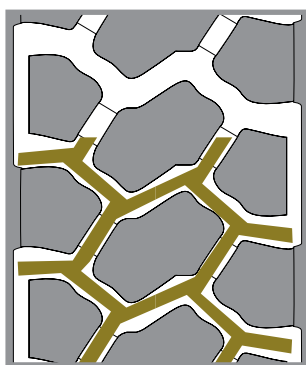
Very good traction



SAFETY

Excellent casing protection

Robust tread pattern



**REGROOVABLE AND
RETREADABLE WITH
MICHELIN  Remix**



RFID TECHNOLOGY¹

¹ Radio frequency identification chip integrated.

MICHELIN TECHNICAL DATA

MILITARY

TYRE CHARACTERISTICS

<i>X FORCE ZL / XZL</i>	<i>PAGE 12</i>
<i>X FORCE 2 / XZL2</i>	<i>PAGE 15</i>
<i>X FORCE ML / XML</i>	<i>PAGE 16</i>
<i>X FORCE S / XS</i>	<i>PAGE 17</i>
<i>X FORCE ZH</i>	<i>PAGE 18</i>

TYRE LOAD IN KG/LB – TYRE PRESSURE IN BAR/PSI

X FORCE ZL / XZL

COMMERCIAL DESCRIPTION	Load/speed index	CAI MSPN	M+S	POR	Measuring Recommended Rim	Optional Rim	Mass (+/- 3%) kg lbs	Tread depth mm 32rd	Overall width (+/- 3mm) mm inch	Overall diameter (+/- 4mm) mm inch	Static laden radius mm inch	Rolling circumference (+/- 0.5%) mm inch
XZL 255/100 R 16 (9.00 R 16) TL*	126K (134J)	110650 70864	✓	✓	6.50 H	6.00G	39,9 88,0	16,5 20,0	255 10	923 36	426 17	2810 111

Running conditions	Maximum load & pressure per tyre				Maximum speed		Footprint
	kg lbs		bar psi		km/h mph		cm² sq. in
Road	1700	3748	4.5	65	110	68	437 68
Cross Country	1700	3748	2.9	40	70	43	577 89
Mud and Sand	1700	3748	1.7	25	30	19	833 129

COMMERCIAL DESCRIPTION	Load/speed index	CAI MSPN	M+S	POR	Measuring Recommended Rim	Optional Rim	Mass (+/- 3%) kg lbs	Tread depth mm 32rd	Overall width (+/- 3mm) mm inch	Overall diameter (+/- 4mm) mm inch	Static laden radius mm inch	Rolling circumference (+/- 0.5%) mm inch
XZL 11.00 R 16 TL*	135K	109142	✓	✓	6.50 H		49,7 109,6	17,5 21,0	287 11	984 39	455 18	3000 118

Running conditions	Maximum load & pressure per tyre				Maximum speed		Footprint
	kg lbs		bar psi		km/h mph		cm² sq. in
Road	2180	4806	5.5	80	110	68	583 90
Cross Country	2180	4806	3.2	45	65	40	756 117
Mud and Sand	2180	4806	1.7	25	20	12	1010 157

COMMERCIAL DESCRIPTION	Load/speed index	CAI MSPN	M+S	POR	Measuring Recommended Rim	Optional Rim	Mass (+/- 3%) kg lbs	Tread depth mm 32rd	Overall width (+/- 3mm) mm inch	Overall diameter (+/- 4mm) mm inch	Static laden radius mm inch	Rolling circumference (+/- 0.5%) mm inch
X FORCE Z 325/85 R 16 TL*	140K	881538 09051	✓	✓	9.00		54,7 120,6	17,0 21,0	329 13	983 39	448 18	2973 117

Running conditions	Maximum load & pressure per tyre				Maximum speed		Footprint
	kg lbs		bar psi		km/h mph		cm² sq. in
Road	2500	5512	5.0	72	110	68	564 87
Cross Country	2500	5512	4	52	70	43	776 120
Mud and Sand	2500	5512	2	28	30	19	1065 165

COMMERCIAL DESCRIPTION	Load/speed index	CAI MSPN	M+S	POR	Measuring Recommended Rim	Optional Rim	Mass (+/- 3%) kg lbs	Tread depth mm 32rd	Overall width (+/- 3mm) mm inch	Overall diameter (+/- 4mm) mm inch	Static laden radius mm inch	Rolling circumference (+/- 0.5%) mm inch
X FORCE ZL MPT 275/80 R 20 (10.5 R 20) TL*	128K	423311	✓	✓	9.00	9SDC W9	34,2 75,4	16,1 20,0	277 11	940 37	433 17	2857 112

Running conditions	Maximum load & pressure per tyre				Maximum speed		Footprint
	kg lbs		bar psi		km/h mph		cm² sq. in
Road	1800	3968	4.2	61	110	68	419 65
Cross Country	1800	3968	2.7	40	70	43	545 84
Mud and Sand	1800	3968	2.0	30	30	19	677 105

COMMERCIAL DESCRIPTION	Load/speed index	CAI MSPN	M+S	POR	Measuring Recommended Rim	Optional Rim	Mass (+/- 3%) kg lbs	Tread depth mm 32rd	Overall width (+/- 3mm) mm inch	Overall diameter (+/- 4mm) mm inch	Static laden radius mm inch	Rolling circumference (+/- 0.5%) mm inch
X FORCE ZL MPT 335/80 R 20 (12.5 R 20) TL*	150K	420813 25677	✓	✓	11.00	11 SDC W11 DW 11 12 12 SDC	58,7 129,4	16,2 20,0	341 13	1037 41	478 19	3160 124

Running conditions	Maximum load & pressure per tyre				Maximum speed		Footprint
	kg lbs		bar psi		km/h mph		cm² sq. in
Road	3350	7385	6.5	93	110	68	635 98
Cross Country	3350	7385	5.7	85	70	43	694 108
Mud and Sand	3350	7385	2.8	40	30	19	1101 171

*MAY BE USED WITH TUBE

All pressures are given for nominal conditions. Extension of use may be allowed for specific needs. Please contact your Michelin representative.

TYRE LOAD IN KG/LB – TYRE PRESSURE IN BAR/PSI

COMMERCIAL DESCRIPTION	Load/speed index	CAI MSPN	M+S	POR	Measuring Recommended Rim	Optional Rim	Mass (+/- 3%) kg lbs	Tread depth mm 32rd	Overall width (+/- 3mm) mm inch	Overall diameter (+/- 4mm) mm inch	Static laden radius mm inch	Rolling circumference (+/- 0.5%) mm inch
X FORCE ZL MPT 365/80 R 20 (14.5 R 20) TL*	158K	892903	✓	✓	11-20	11DC, 11SDC	72 158,7	20.0	372 15	1102 43	504 20	3335 131
Running conditions		Maximum load & pressure per tyre				Maximum speed				Footprint		
		kg lbs			bar psi			km/h mph		cm² sq. in		
Road		4250 9370			6.5 94			110 68		816 126		
Cross Country		4250 9370			5.1 74			70 43		929 144		
Mud and Sand		4250 9370			3.0 44			30 19		1212 188		
XZL MPT 365/80 R 20 (14.5 R 20) TL*	152K	110081 97627	✓	✓	11.00		71,3 157,2	19,9 25,0	372 15	1096 43	501 20	3330 131
Running conditions		Maximum load & pressure per tyre				Maximum speed				Footprint		
		kg lbs			bar psi			km/h mph		cm² sq. in		
Road		3550 7826			6.0 87			110 68		777 120		
Cross Country		3550 7826			4.7 68			65 40		880 136		
Mud and Sand		3550 7826			2.4 35			20 12		1244 193		
XZL 365/85 R 20 TL*	164G	109374 56389	✓	✓	10.00		88,3 194,7	22,5 28,0	368 14	1144 45	520 20	3460 136
Running conditions		Maximum load & pressure per tyre				Maximum speed				Footprint		
		kg lbs			bar psi			km/h mph		cm² sq. in		
Road		5000 11023			7.5 109			90 55		857 133		
Cross Country		3250 7165			3.8 55			70 43		932 144		
Mud and Sand		3250 7165			2.1 30			30 19		1246 193		
XZL 395/85 R 20 TL*	168G (161J)	110013 54331	✓	✓	10.00W	10.0 10.00	98,5 217,2	25,8 33,0	388 15	1189 47	542 21	3600 142
Running conditions		Maximum load & pressure per tyre				Maximum speed				Footprint		
		kg lbs			bar psi			km/h mph		cm² sq. in		
Road		5600 12346			8.5 123			90 55		932 144		
Cross Country		3650 8047			3.6 52			70 43		1110 172		
Mud and Sand		3650 8047			2.1 30			30 19		1432 222		
XZL 10.00 R 20 TT	146/143K	110148	✓	✓	7.50		53,9 118,8	17,3 21,0	281 11	1060 42	493 19	3240 128
Running conditions		Maximum load & pressure per tyre				Maximum speed				Footprint		
		kg lbs			bar psi			km/h mph		cm² sq. in		
Road		3000 6614			7.8 113			110 68		500 78		
Cross Country		1950 4299			2.9 42			65 40		615 95		
Mud and Sand		1950 4299			1.5 22			20 12		799 124		
XZL 11.00 R 20 TL*	150/146K	110062	✓	✓	8.00	8.50 7.50	63,7 140,4	18,0 23,0	299 12	1092 43	508 20	3340 131
Running conditions		Maximum load & pressure per tyre				Maximum speed				Footprint		
		kg lbs			bar psi			km/h mph		cm² sq. in		
Road		3350 7385			8.0 116			110 68		546 85		
Cross Country		2200 4850			2.9 40			65 40		700 109		
Mud and Sand		2200 4850			1.5 20			20 12		931 144		

*MAY BE USED WITH TUBE

All pressures are given for nominal conditions. Extension of use may be allowed for specific needs. Please contact your Michelin representative.

TYRE LOAD IN KG/LB – TYRE PRESSURE IN BAR/PSI

COMMERCIAL DESCRIPTION	Load/speed index	CAI MSPN	M+S	POR	Measuring Recommended Rim	Optional Rim	Mass (+/- 3%) kg lbs	Tread depth mm 32rd	Overall width (+/- 3mm) mm inch	Overall diameter (+/- 4mm) mm inch	Static laden radius mm inch	Rolling circumference (+/- 0.5%) mm inch																																																																																																																																																																																																																																																																																																																																																																																	
XZL 12.00 R 20 TL*	154/149K	110132 02383	✓	✓	8.50	7.33	73,2 161,4	18,7 24,0	311 12	1131 45	527 21	3460 136																																																																																																																																																																																																																																																																																																																																																																																	
						7.50 8.00 9.0							Running conditions		Maximum load & pressure per tyre					Maximum speed		Footprint											kg lbs	bar psi	km/h mph	cm² sq. in			Road		3750	8267				8.5	123	110	68	611	95	Cross Country		2450	5401				2.8	41	65	40	831	129	Mud and Sand		2450	5401				1.5	22	20	12	1122	174	X FORCE ZL™ 14.00 R 20 TL*	168/165K	249003	✓	✓	10.00W	9.0	105,0 231,5	22.3	386 15	1258 50	578 23	3832 151	10.0 10.0	Running conditions		Maximum load & pressure per tyre					Maximum speed		Footprint											kg lbs	bar psi	km/h mph	cm² sq. in			Road		5600	12346				8.6	125	110	68	983	152	Cross Country		5600	12346				6.2	90	70	43	1240	192	Mud and Sand		5600	12346				4.1	59	30	19	1657	257	XZL+ 14.00 R 20 TL*	164/160J (166G)	323281 71701	✓	✓	10.00W	10.00W	104,2 229,7	22,3 28,0	386 15	1258 50	578 23	3832 151	10.00W	Running conditions		Maximum load & pressure per tyre					Maximum speed		Footprint											kg lbs	bar psi	km/h mph	cm² sq. in			Road		5000	11023				7.6	110	100	62	983	152	Cross Country		5000	11023				5.5	80	70	43	1240	192	Mud and Sand		5000	11023				3.3	50	30	19	1657	257	X FORCE ZL 16.00 R 20 TL*	174/171J	143659	✓	✓	10.00W	10.00,	143,8 317,0	24,7 31,0	420 16.5	1353 53	612 24	4111 162	11.25	Running conditions		Maximum load & pressure per tyre					Maximum speed		Footprint											kg lbs	bar psi	km/h mph	cm² sq. in			Road		6700	14771				7.6	110	100	62	1290	200	Cross Country		6700	14771				6.1	88	70	43	1454	225	Mud and Sand		6700	14771				4.6	67	30	19	1638	254	XZL 16.00 R 20 TL*	173/170G	123357 06306	-	✓	10.00W	10.00	151,7 334,4	27,0 34,0	438 17	1343 53	609 24	4090 161	10.0V 11.25	Running conditions		Maximum load & pressure per tyre					Maximum speed		Footprint											kg lbs	bar psi	km/h mph	cm² sq. in			Road		6500	14330				7.5	109	90	56	1288	200	Cross Country		4500	9921				3.4	49	70	43	1496	232	Mud and Sand
Running conditions		Maximum load & pressure per tyre					Maximum speed		Footprint																																																																																																																																																																																																																																																																																																																																																																																				
							kg lbs	bar psi	km/h mph	cm² sq. in																																																																																																																																																																																																																																																																																																																																																																																			
Road		3750	8267				8.5	123	110	68	611	95																																																																																																																																																																																																																																																																																																																																																																																	
Cross Country		2450	5401				2.8	41	65	40	831	129																																																																																																																																																																																																																																																																																																																																																																																	
Mud and Sand		2450	5401				1.5	22	20	12	1122	174																																																																																																																																																																																																																																																																																																																																																																																	
X FORCE ZL™ 14.00 R 20 TL*	168/165K	249003	✓	✓	10.00W	9.0	105,0 231,5	22.3	386 15	1258 50	578 23	3832 151																																																																																																																																																																																																																																																																																																																																																																																	
						10.0 10.0							Running conditions		Maximum load & pressure per tyre					Maximum speed		Footprint											kg lbs	bar psi	km/h mph	cm² sq. in			Road		5600	12346				8.6	125	110	68	983	152	Cross Country		5600	12346				6.2	90	70	43	1240	192	Mud and Sand		5600	12346				4.1	59	30	19	1657	257	XZL+ 14.00 R 20 TL*	164/160J (166G)	323281 71701	✓	✓	10.00W	10.00W	104,2 229,7	22,3 28,0	386 15	1258 50	578 23	3832 151	10.00W	Running conditions		Maximum load & pressure per tyre					Maximum speed		Footprint											kg lbs	bar psi	km/h mph	cm² sq. in			Road		5000	11023				7.6	110	100	62	983	152	Cross Country		5000	11023				5.5	80	70	43	1240	192	Mud and Sand		5000	11023				3.3	50	30	19	1657	257	X FORCE ZL 16.00 R 20 TL*	174/171J	143659	✓	✓	10.00W	10.00,	143,8 317,0	24,7 31,0	420 16.5	1353 53	612 24	4111 162	11.25	Running conditions		Maximum load & pressure per tyre					Maximum speed		Footprint											kg lbs	bar psi	km/h mph	cm² sq. in			Road		6700	14771				7.6	110	100	62	1290	200	Cross Country		6700	14771				6.1	88	70	43	1454	225	Mud and Sand		6700	14771				4.6	67	30	19	1638	254	XZL 16.00 R 20 TL*	173/170G	123357 06306	-	✓	10.00W	10.00	151,7 334,4	27,0 34,0	438 17	1343 53	609 24	4090 161	10.0V 11.25	Running conditions		Maximum load & pressure per tyre					Maximum speed		Footprint											kg lbs	bar psi	km/h mph	cm² sq. in			Road		6500	14330				7.5	109	90	56	1288	200	Cross Country		4500	9921				3.4	49	70	43	1496	232	Mud and Sand		4500	9921				1.8	26	30	19	1959	304																																																																			
Running conditions		Maximum load & pressure per tyre					Maximum speed		Footprint																																																																																																																																																																																																																																																																																																																																																																																				
							kg lbs	bar psi	km/h mph	cm² sq. in																																																																																																																																																																																																																																																																																																																																																																																			
Road		5600	12346				8.6	125	110	68	983	152																																																																																																																																																																																																																																																																																																																																																																																	
Cross Country		5600	12346				6.2	90	70	43	1240	192																																																																																																																																																																																																																																																																																																																																																																																	
Mud and Sand		5600	12346				4.1	59	30	19	1657	257																																																																																																																																																																																																																																																																																																																																																																																	
XZL+ 14.00 R 20 TL*	164/160J (166G)	323281 71701	✓	✓	10.00W	10.00W	104,2 229,7	22,3 28,0	386 15	1258 50	578 23	3832 151																																																																																																																																																																																																																																																																																																																																																																																	
						10.00W							Running conditions		Maximum load & pressure per tyre					Maximum speed		Footprint											kg lbs	bar psi	km/h mph	cm² sq. in			Road		5000	11023				7.6	110	100	62	983	152	Cross Country		5000	11023				5.5	80	70	43	1240	192	Mud and Sand		5000	11023				3.3	50	30	19	1657	257	X FORCE ZL 16.00 R 20 TL*	174/171J	143659	✓	✓	10.00W	10.00,	143,8 317,0	24,7 31,0	420 16.5	1353 53	612 24	4111 162	11.25	Running conditions		Maximum load & pressure per tyre					Maximum speed		Footprint											kg lbs	bar psi	km/h mph	cm² sq. in			Road		6700	14771				7.6	110	100	62	1290	200	Cross Country		6700	14771				6.1	88	70	43	1454	225	Mud and Sand		6700	14771				4.6	67	30	19	1638	254	XZL 16.00 R 20 TL*	173/170G	123357 06306	-	✓	10.00W	10.00	151,7 334,4	27,0 34,0	438 17	1343 53	609 24	4090 161	10.0V 11.25	Running conditions		Maximum load & pressure per tyre					Maximum speed		Footprint											kg lbs	bar psi	km/h mph	cm² sq. in			Road		6500	14330				7.5	109	90	56	1288	200	Cross Country		4500	9921				3.4	49	70	43	1496	232	Mud and Sand		4500	9921				1.8	26	30	19	1959	304																																																																																																																																																		
Running conditions		Maximum load & pressure per tyre					Maximum speed		Footprint																																																																																																																																																																																																																																																																																																																																																																																				
							kg lbs	bar psi	km/h mph	cm² sq. in																																																																																																																																																																																																																																																																																																																																																																																			
Road		5000	11023				7.6	110	100	62	983	152																																																																																																																																																																																																																																																																																																																																																																																	
Cross Country		5000	11023				5.5	80	70	43	1240	192																																																																																																																																																																																																																																																																																																																																																																																	
Mud and Sand		5000	11023				3.3	50	30	19	1657	257																																																																																																																																																																																																																																																																																																																																																																																	
X FORCE ZL 16.00 R 20 TL*	174/171J	143659	✓	✓	10.00W	10.00,	143,8 317,0	24,7 31,0	420 16.5	1353 53	612 24	4111 162																																																																																																																																																																																																																																																																																																																																																																																	
						11.25							Running conditions		Maximum load & pressure per tyre					Maximum speed		Footprint											kg lbs	bar psi	km/h mph	cm² sq. in			Road		6700	14771				7.6	110	100	62	1290	200	Cross Country		6700	14771				6.1	88	70	43	1454	225	Mud and Sand		6700	14771				4.6	67	30	19	1638	254	XZL 16.00 R 20 TL*	173/170G	123357 06306	-	✓	10.00W	10.00	151,7 334,4	27,0 34,0	438 17	1343 53	609 24	4090 161	10.0V 11.25	Running conditions		Maximum load & pressure per tyre					Maximum speed		Footprint											kg lbs	bar psi	km/h mph	cm² sq. in			Road		6500	14330				7.5	109	90	56	1288	200	Cross Country		4500	9921				3.4	49	70	43	1496	232	Mud and Sand		4500	9921				1.8	26	30	19	1959	304																																																																																																																																																																																																																																	
Running conditions		Maximum load & pressure per tyre					Maximum speed		Footprint																																																																																																																																																																																																																																																																																																																																																																																				
							kg lbs	bar psi	km/h mph	cm² sq. in																																																																																																																																																																																																																																																																																																																																																																																			
Road		6700	14771				7.6	110	100	62	1290	200																																																																																																																																																																																																																																																																																																																																																																																	
Cross Country		6700	14771				6.1	88	70	43	1454	225																																																																																																																																																																																																																																																																																																																																																																																	
Mud and Sand		6700	14771				4.6	67	30	19	1638	254																																																																																																																																																																																																																																																																																																																																																																																	
XZL 16.00 R 20 TL*	173/170G	123357 06306	-	✓	10.00W	10.00	151,7 334,4	27,0 34,0	438 17	1343 53	609 24	4090 161																																																																																																																																																																																																																																																																																																																																																																																	
						10.0V 11.25							Running conditions		Maximum load & pressure per tyre					Maximum speed		Footprint											kg lbs	bar psi	km/h mph	cm² sq. in			Road		6500	14330				7.5	109	90	56	1288	200	Cross Country		4500	9921				3.4	49	70	43	1496	232	Mud and Sand		4500	9921				1.8	26	30	19	1959	304																																																																																																																																																																																																																																																																																																																
Running conditions		Maximum load & pressure per tyre					Maximum speed		Footprint																																																																																																																																																																																																																																																																																																																																																																																				
							kg lbs	bar psi	km/h mph	cm² sq. in																																																																																																																																																																																																																																																																																																																																																																																			
Road		6500	14330				7.5	109	90	56	1288	200																																																																																																																																																																																																																																																																																																																																																																																	
Cross Country		4500	9921				3.4	49	70	43	1496	232																																																																																																																																																																																																																																																																																																																																																																																	
Mud and Sand		4500	9921				1.8	26	30	19	1959	304																																																																																																																																																																																																																																																																																																																																																																																	

*MAY BE USED WITH TUBE

All pressures are given for nominal conditions. Extension of use may be allowed for specific needs. Please contact your Michelin representative.

TYRE LOAD IN KG/LB – TYRE PRESSURE IN BAR/PSI

COMMERCIAL DESCRIPTION	Load/speed index	CAI MSPN	M+S	POR	Measuring Recommended Rim	Optional Rim	Mass (+/- 3%) kg lbs	Tread depth mm 32rd	Overall width (+/- 3mm) mm inch	Overall diameter (+/- 4mm) mm inch	Static laden radius mm inch	Rolling circumference (+/- 0.5%) mm inch
XZL 24 R 21 TL	176G	110257 76025	✓	✓	18.00		190,8 420,6	25,0 31,0	608 24	1388 55	631 25	4200 165

Running conditions	Maximum load & pressure per tyre				Maximum speed		Footprint	
	kg lbs	bar psi	km/h mph	cm² sq. in				
Road	7100 15653	6.0 87	90 56	1675 260				
Cross Country	5500 12125	3.1 45	65 40	2072 321				
Mud and Sand	5500 12125	1.6 25	20 12	2898 449				

COMMERCIAL DESCRIPTION	Load/speed index	CAI MSPN	M+S	POR	Measuring Recommended Rim	Optional Rim	Mass (+/- 3%) kg lbs	Tread depth mm 32rd	Overall width (+/- 3mm) mm inch	Overall diameter (+/- 4mm) mm inch	Static laden radius mm inch	Rolling circumference (+/- 0.5%) mm inch
XZL 13 R 22.5 TL	154/150K	109668	✓	✓	9.00		74,0 163,1	20,2 25,0	307 12	1130 44	525 21	3450 136

Running conditions single or dual mount	Maximum load & pressure per tyre				Maximum speed		Footprint	
	kg lbs	bar psi	km/h mph	cm² sq. in				
Road	3750 8267	8.0 116	110 68	637 99				
Road	3350 7385	8.0 116	110 68	595 92				
Cross Country	2450 5401	3.3 50	70 43	780 121				
Mud and Sand	2450 5401	1.7 25	30 19	1037 161				

COMMERCIAL DESCRIPTION	Load/speed index	CAI MSPN	M+S	POR	Measuring Recommended Rim	Optional Rim	Mass (+/- 3%) kg lbs	Tread depth mm 32rd	Overall width (+/- 3mm) mm inch	Overall diameter (+/- 4mm) mm inch	Static laden radius mm inch	Rolling circumference (+/- 0.5%) mm inch
XZL (WB) 445/65 R 22.5 TL	168G	110142 84103 20807	✓	✓	14.00		105,1 231,7	21,0 26,0	448 18	1168 46	537 21	3550 140

Running conditions	Maximum load & pressure per tyre				Maximum speed		Footprint	
	kg lbs	bar psi	km/h mph	cm² sq. in				
Road	5600 12346	8.0 116	90 56	1037 161				
Cross Country	3800 8377	4.0 58	65 40	1151 178				
Mud and Sand	3800 8377	2.3 33	20 12	1453 225				

COMMERCIAL DESCRIPTION	Load/speed index	CAI MSPN	M+S	POR	Measuring Recommended Rim	Optional Rim	Mass (+/- 3%) kg lbs	Tread depth mm 32rd	Overall width (+/- 3mm) mm inch	Overall diameter (+/- 4mm) mm inch	Static laden radius mm inch	Rolling circumference (+/- 0.5%) mm inch
X FORCE ZL 415/80 R 685 TL	168K	275224	✓	✓	230 - 685 TR		113,7 250,7	20,8 26,0	435 17	1332 52	615 24	4080 161

Running conditions	Maximum load & pressure per tyre				Maximum speed		Footprint	
	kg lbs	bar psi	km/h mph	cm² sq. in				
Road	5600 12346	8.5 123	110 68	903 140				
Cross Country	5600 12346	5.0 73	70 43	1325 205				
Mud and Sand	5600 12346	3.3 48	30 19	1790 277				

X FORCE 2 / XZL2

COMMERCIAL DESCRIPTION	Load/speed index	CAI MSPN	M+S	POR	Measuring Recommended Rim	Optional Rim	Mass (+/- 3%) kg lbs	Tread depth mm 32rd	Overall width (+/- 3mm) mm inch	Overall diameter (+/- 4mm) mm inch	Static laden radius mm inch	Rolling circumference (+/- 0.5%) mm inch
XZL 2 395/85 R 20 TL*	168K (164L)	519331 83808	✓	✓	10.00	10.00W	96,7 213,2	20,0 25,0	388 15	1176 46	534 21	3584 141

Running conditions	Maximum load & pressure per tyre				Maximum speed		Footprint	
	kg lbs	bar psi	km/h mph	cm² sq. in				
Road	5600 12346	8.5 123	110 68	913 142				
Cross Country	3640 8025	3.6 52	70 43	1155 179				
Mud and Sand	3640 8025	2.1 30	30 19	1584 246				

*MAY BE USED WITH TUBE

All pressures are given for nominal conditions. Extension of use may be allowed for specific needs. Please contact your Michelin representative.

TYRE LOAD IN KG/LB – TYRE PRESSURE IN BAR/PSI

X FORCE ML / XML

COMMERCIAL DESCRIPTION	Load/speed index	CAI MSPN	M+S	POR	Measuring Recommended Rim	Optional Rim	Mass (+/- 3%) kg lbs	Tread depth mm 32rd	Overall width (+/- 3mm) mm inch	Overall diameter (+/- 4mm) mm inch	Static laden radius mm inch	Rolling circumference (+/- 0.5%) mm inch
XML 325/85 R 16 TL	137J (134K)	109683 37984	✓	✓	9.00		54,0 119,0	16,5 20,0	327 13	984 39	449 18	2980 117
Running conditions		Maximum load & pressure per tyre					Maximum speed			Footprint		
		kg lbs			bar psi			km/h mph			cm² sq. in	
Road		2300 5071			4.5 65			100 62			604 94	
Cross Country		2300 5071			3.1 45			70 43			831 129	
Mud and Sand		2300 5071			1.6 25			30 19			1140 177	
XML 395/85 R 20 TL	161G	110510 99131	✓	✓	10.00	10.00W	95,0 209,4	23,7 30,0	385 15	1187 47	543 21	3590 141
Running conditions		Maximum load & pressure per tyre					Maximum speed			Footprint		
		kg lbs			bar psi			km/h mph			cm² sq. in	
Road		4625 10196			7.0 102			90 56			874 135	
Cross Country		4625 10196			4.8 70			70 43			1219 189	
Mud and Sand		4625 10196			2.8 40			30 19			1619 251	
XML 475/80 R 20 TL	166G	109723	✓	✓	14.0V		129,2 284,8	23,5 29,0	480 19	1272 50	581 23	3860 152
Running conditions		Maximum load & pressure per tyre					Maximum speed			Footprint		
		kg lbs			bar psi			km/h mph			cm² sq. in	
Road		5300 11684			6.0 87			90 56			1141 177	
Cross Country		4000 8818			2.9 40			70 43			1572 244	
Mud and Sand		4000 8818			1.6 25			30 19			2108 327	
XML 12.00 R 20 TL*	149/146J	110259 63997	✓	✓	8.50	7.33 7.50 8.0 9.0	76,3 168,2	19,5 24,0	308 12	1131 45	526 21	3443 136
Running conditions		Maximum load & pressure per tyre					Maximum speed			Footprint		
		kg lbs			bar psi			km/h mph			cm² sq. in	
Road		3250 7165			7.2 105			100 62			787 122	
Cross Country		3250 7165			4.1 60			70 43			997 155	
Mud and Sand		3250 7165			2.3 35			30 19			1292 200	
XML 14.00 R 20 TL	153G (149K)	109093	✓	✓	10.00W	9.0 10.00V 10.0	101,0 222,7	24,4 30,0	383 15	1258 50	581 23	3830 151
Running conditions		Maximum load & pressure per tyre					Maximum speed			Footprint		
		kg lbs			bar psi			km/h mph			cm² sq. in	
Road		3650 8047			6.2 90			90 56			935 145	
Cross Country		3650 8047			3.5 50			70 43			1458 226	
Mud and Sand		3650 8047			1.6 25			30 19			2273 352	

*MAY BE USED WITH TUBE

All pressures are given for nominal conditions. Extension of use may be allowed for specific needs. Please contact your Michelin representative.

TYRE LOAD IN KG/LB – TYRE PRESSURE IN BAR/PSI

COMMERCIAL DESCRIPTION	Load/speed index	CAI MSPN	M+S	POR	Measuring Recommended Rim	Optional Rim	Mass (+/- 3%) kg lbs	Tread depth mm 32rd	Overall width (+/- 3mm) mm inch	Overall diameter (+/- 4mm) mm inch	Static laden radius mm inch	Rolling circumference (+/- 0.5%) mm inch
XML 395/90 R 560 TR TL	154K (156 F)	982123	✓	✓	240 TR		102,0 224,9	24,4 30,0	392 15	1256 49	582 23	3835 151
Running conditions		Maximum load & pressure per tyre						Maximum speed		Footprint		
		kg lbs			bar psi			km/h mph		cm² sq. in		
Road		3750 8267			6.4 93			110 68		810 126		
Cross Country		3750 8267			3.5 51			70 43		1267 196		
Mud and Sand		3750 8267			1.7 25			30 19		1794 278		

COMMERCIAL DESCRIPTION	Load/speed index	CAI MSPN	M+S	POR	Measuring Recommended Rim	Optional Rim	Mass (+/- 3%) kg lbs	Tread depth mm 32rd	Overall width (+/- 3mm) mm inch	Overall diameter (+/- 4mm) mm inch	Static laden radius mm inch	Rolling circumference (+/- 0.5%) mm inch
X FORCE ML 395/90 R 560 TR TL	158G (156J)	629878	✓	✓	240 TR		108,6 239,4	24,4 30,0	392 15	1256 49	579 23	3823 151
Running conditions		Maximum load & pressure per tyre						Maximum speed		Footprint		
		kg lbs			bar psi			km/h mph		cm² sq. in		
Road		4250 9370			6.6 96			90 56		860 133		
Cross Country		4250 9370			3.8 55			70 43		1317 204		
Mud and Sand		4250 9370			1.9 28			30 19		1910 296		

COMMERCIAL DESCRIPTION	Load/speed index	CAI MSPN	M+S	POR	Measuring Recommended Rim	Optional Rim	Mass (+/- 3%) kg lbs	Tread depth mm 32rd	Overall width (+/- 3mm) mm inch	Overall diameter (+/- 4mm) mm inch	Static laden radius mm inch	Rolling circumference (+/- 0.5%) mm inch
XML 415/80 R 685 TR TL	160K	355963	✓	✓	230 - 685TR		104,7 230,8	22,5 28,0	404 16	1330 52	613 24	4072 160
Running conditions		Maximum load & pressure per tyre						Maximum speed		Footprint		
		kg lbs			bar psi			km/h mph		cm² sq. in		
Road		4500 9921			6.7 97			110 68		918 142		
Cross Country		4500 9921			3.9 57			70 43		1490 231		
Mud and Sand		4500 9921			2.5 36			30 19		1877 291		

X FORCE S / XS

COMMERCIAL DESCRIPTION	Load/speed index	CAI MSPN	M+S	POR	Measuring Recommended Rim	Optional Rim	Mass (+/- 3%) kg lbs	Tread depth mm 32rd	Overall width (+/- 3mm) mm inch	Overall diameter (+/- 4mm) mm inch	Static laden radius mm inch	Rolling circumference (+/- 0.5%) mm inch
X FORCE S 7.50 R16 TL	116/114N	298993	✓	✓	6.00G		22.3 49.2	12.7 16.0	212 8	824 32	384 15	2520 99
Running conditions		Maximum load & pressure per tyre						Maximum speed		Footprint		
		kg lbs			bar psi			km/h mph		cm² sq. in		
Road		1250 2756			5.5 80			140 87		266 41		
Road		1180 2601			5.5 80			130 81		254 39		
Cross Country		1250 2756			3.4 49			65 40		353 55		
Mud and Sand		1250 2756			1.9 28			20 12		498 77		

COMMERCIAL DESCRIPTION	Load/speed index	CAI MSPN	M+S	POR	Measuring Recommended Rim	Optional Rim	Mass (+/- 3%) kg lbs	Tread depth mm 32rd	Overall width (+/- 3mm) mm inch	Overall diameter (+/- 4mm) mm inch	Static laden radius mm inch	Rolling circumference (+/- 0.5%) mm inch
XS 525/65 R 20.5 (20.5 R 20.5) TL	173F	109421	✓	✓	16.00		130,3 287,3	16,8 21,0	521 21	1200 47	548 22	3640 143
Running conditions		Maximum load & pressure per tyre						Maximum speed		Footprint		
		kg lbs			bar psi			km/h mph		cm² sq. in		
Road		6500 14330			8.0 116			80 50		1121 174		
Cross Country		4300 9480			3.8 55			70 43		1298 201		
Mud and Sand		4300 9480			2.2 32			30 19		1698 263		

*MAY BE USED WITH TUBE

All pressures are given for nominal conditions. Extension of use may be allowed for specific needs. Please contact your Michelin representative.

TYRE LOAD IN KG/LB – TYRE PRESSURE IN BAR/PSI

COMMERCIAL DESCRIPTION	Load/speed index	CAI MSPN	M+S	POR	Measuring Recommended Rim	Optional Rim	Mass (+/- 3%) kg lbs	Tread depth mm 32rd	Overall width (+/- 3mm) mm inch	Overall diameter (+/- 4mm) mm inch	Static laden radius mm inch	Rolling circumference (+/- 0.5%) mm inch
XS 24 R 20.5 TL	176F	109174 23002	✓	✓	18.00		180,1 397,0	16,8 21,0	602 24	1374 54	620 24	4150 163
Running conditions		Maximum load & pressure per tyre				Maximum speed				Footprint		
		kg lbs			bar psi			km/h mph		cm² sq. in		
Road		7100 15653			6.0 90			80 50		1563 242		
Cross Country		5500 12125			3.4 49			70 43		1919 297		
Mud and Sand		5500 12125			1.9 28			30 19		2920 453		

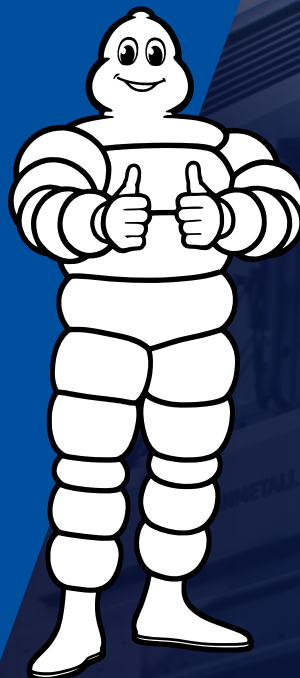
X FORCE ZH

COMMERCIAL DESCRIPTION	Load/speed index	CAI MSPN	M+S	POR	Measuring Recommended Rim	Optional Rim	Mass (+/- 3%) kg lbs	Tread depth mm 32rd	Overall width (+/- 3mm) mm inch	Overall diameter (+/- 4mm) mm inch	Static laden radius mm inch	Rolling circumference (+/- 0.5%) mm inch
X FORCE ZH™ 13 R 22.5 TL	154/150G (156/150F)	308831	✓	✓	9.00		84,6 186,5	21,8	316 12	1134 45	528 21	3451 136
Running conditions		Maximum load & pressure per tyre				Maximum speed				Footprint		
		kg lbs			bar psi			km/h mph		cm² sq. in		
Road		3750 8267			8.0 115			90 56		621 96		
Road		3350 7385			8.0 115			90 56		576 89		
Cross Country		3750 8267			6.9 100			70 43		796 123		
Mud and Sand		3750 8267			3.5 51			30 19		1175 182		

COMMERCIAL DESCRIPTION	Load/speed index	CAI MSPN	M+S	POR	Measuring Recommended Rim	Optional Rim	Mass (+/- 3%) kg lbs	Tread depth mm 32rd	Overall width (+/- 3mm) mm inch	Overall diameter (+/- 4mm) mm inch	Static laden radius mm inch	Rolling circumference (+/- 0.5%) mm inch
X FORCE ZH 315/80 R 22.5 TL	156/150G	668200	✓	✓	9.00		75,5 166,4	20,1 25,0	317 12	1088 43	503 20	3318 131
Running conditions		Maximum load & pressure per tyre				Maximum speed				Footprint		
		kg lbs			bar psi			km/h mph		cm² sq. in		
Road		4000 8818			8.5 123			90 56		591 92		
Road		3350 7385			8.5 123			90 56		527 82		
Cross Country		2600 5732			3.8 55			70 43		713 111		
Mud and Sand		2600 5732			2.2 32			30 19		970 150		

COMMERCIAL DESCRIPTION	Load/speed index	CAI MSPN	M+S	POR	Measuring Recommended Rim	Optional Rim	Mass (+/- 3%) kg lbs	Tread depth mm 32rd	Overall width (+/- 3mm) mm inch	Overall diameter (+/- 4mm) mm inch	Static laden radius mm inch	Rolling circumference (+/- 0.5%) mm inch
X FORCE ZH 325/95 R 24 TL	167/164F	396741	✓	✓	9.00		93,2 205,5	27,2 34,0	313 12,0	1242 49	571 22	3769 148
Running conditions		Maximum load & pressure per tyre				Maximum speed				Footprint		
		kg lbs			bar psi			km/h mph		cm² sq. in		
Road		5450 12015			9.0 131			80 50		743 115		
Road		5000 11023			9.0 131			80 50		703 109		
Cross Country		3500 7716			4.2 61			65 40		866 134		
Mud and Sand		3500 7716			2.3 33			20 12		1181 183		

If you have further questions about accessories, please contact your sales advisor.



2022

May 2022 edition

**MICHELIN
TECHNICAL DATA**

**MICHELIN MILITARY
TYRES DATA BOOK**

[BUSINESS.MICHELINMAN.COM/COUNTRY-SELECTOR](https://business.michelinman.com/country-selector)

HEADQUARTERS

Manufacture Française des Pneumatiques Michelin
partnership limited by shares with capital of 504 000 004 €
Registered office: Place des Carmes Déchaux - 63040 CLERMONT-FERRAND Cedex 9 - FRANCE
Tel.: +33(0)4 73 32 20 00

855 200 507 RCS Clermont-Ferrand



MICHELIN