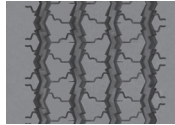
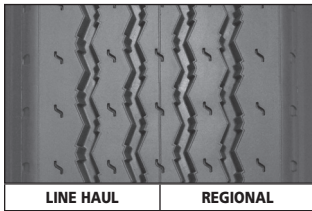


ALL-POSITION RETREADS



Available in the 240 mm – 20/43" width only.

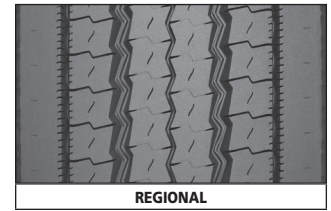
XZA Pre-Mold Retread

All-wheel position tread design with proven versatility and exceptional resistance to scrub and abrasion for line haul and regional applications.
Available siped.



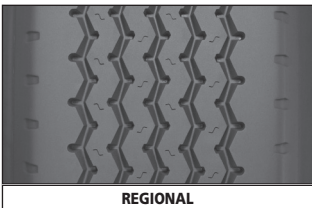
XZE Pre-Mold Retread

All-position retread designed for regional and line haul applications requiring exceptional traction and tire wear resistance.
Available siped.



XZE2+ Pre-Mold Retread

All-position retread designed for regional applications requiring exceptional tire wear resistance.



XZA Wide Base Pre-Mold Retread

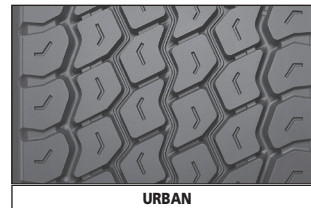
All-wheel position tread design with proven versatility and wide shoulder rib to withstand scrub and abrasion for regional applications.



XZU2 Pre-Mold Retread

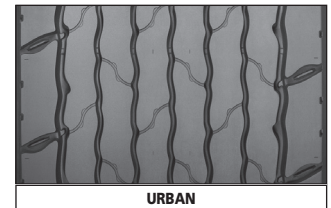
All-position retread optimized for operations involving frequent stopping and starting e.g., transit buses*, delivery vehicles and sanitation trucks.

* Federal Motor Carrier Safety Regulations, 9 C.F.R. § 395.75 (d), specify that "no bus shall be operated with regrooved, recapped or retreaded tires on the front wheels."



X ONE XZUS Pre-Mold Retread

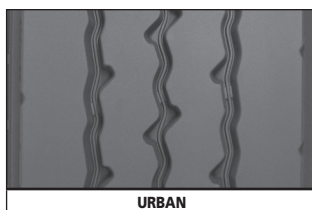
Multi-purpose, all-axle, next generation wide-based single, designed with traction and durability features for demanding urban applications.



X ONE XZUS+ Pre-Mold Retread

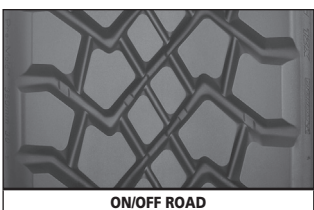
Industry-leading, all-position, next generation wide-based single, designed with 50% greater wear life* and durability for demanding urban applications.**

* Vs. Michelin X ONE XZU S Pre-Mold Retread.
** Used in intermittent highway service with maximum speed of 65 mph.



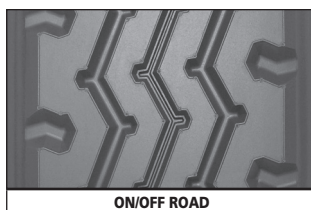
XZUS Pre-Mold Retread

All-position retread helps provide longer, more even wear in demanding regional/urban operations.



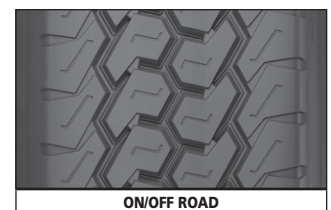
XZL Wide Base Pre-Mold Retread

All-position tire designed to deliver long life for challenging on/off road applications.



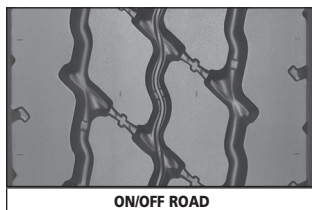
XZY Pre-Mold Retread

All-position retread designed for regional and on/off road applications requiring exceptional tire wear resistance.



XZY Wide Base Pre-Mold Retread

All-position retread designed to deliver long tire life for challenging on/off road applications.



XZY3 Pre-Mold Retread

All-wheel position tread designed for exceptional wear and all-position traction in mixed on/off road service. Abrasion resistance compound promotes long casing and tread life.



XZY3 Wide Base Pre-Mold Retread

All-wheel position tread designed for exceptional wear and all-position traction in mixed on/off road service. Abrasion resistance compound promotes long casing and tread life.

ALL-POSITION RETREADS

Tread Size	140	150	160	170	180	190	200	210	220	230	240	250	260	270	280	
Size \ # DIE				168\#5	177\#6	194\#7	203\#8	211\#8.5N	219\#9	225\#9.5	232\#10	238\#10.5	252\#12			
XZA ⁽¹⁾	13/32" - 10.5 mm					15/32" - 12 mm						20/32" 16 mm				
XZE ⁽¹⁾				16/32" 13 mm	18/32" - 14 mm						18/32" - 14 mm					
XZE2+											20/32" - 16 mm					
XZU2											24/32" - 20 mm					
XZUS									26/32" - 21 mm					26/32" - 21 mm		
XZY							18/32" - 14 mm					20/32" 16 mm				
XZY 3								24/32" - 19 mm							24/32" 19 mm	

WIDE BASE AND X ONE ALL-POSITION SIZES

Tread Size	290/345 ⁽²⁾	320/365 ⁽²⁾	350/395 ⁽²⁾	385/435 ⁽²⁾
XZA Wide Base	19/32" - 15 mm			
XZL Wide Base			30/32" 24 mm	
XZY Wide Base		20/32" 16 mm		
XZY3 Wide Base	22/32" 17 mm			
X ONE XZUS				23/32" 18 mm
X ONE XZUS+ ⁽³⁾				29/32" 23 mm

Product Availability (Tread Depth in Shaded Boxes)

Tread Size Size \ # DIE

For up-to-date product information please visit business.michelinman.com

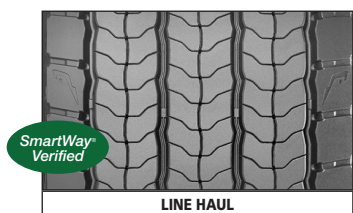
Retread tread selection should always consider the casing's original service application design and speed limit as published in that tire manufacturer's data book. Applying treads intended for a more severe service / speed application than the original casing design or that would imply a higher speed service than the casing's original speed rating, is generally not recommended.

(1) Available siped. Consult Michelin Retread Technologies dealers for availability.

(2) Tread widths with two measurements have wings. The first number is tread base width in mm. The second number is the overall width, wing tip to tip.

(3) Used in intermittent highway service with maximum speed of 65 mph.

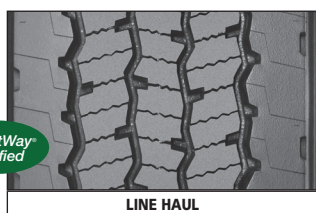
DRIVE RETREADS



LINE HAUL

X ONE LINE ENERGY D2 Pre-Mold Retread

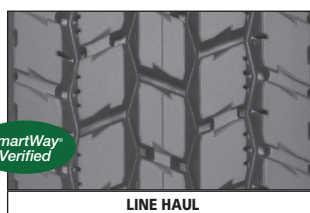
Our lowest rolling resistance heavy truck drive retread to date, for truckload, long haul transportation. Designed for industry-leading fuel savings to lower total cost of ownership while providing exceptional traction for driver confidence.



LINE HAUL

X® LINE ENERGY D Pre-Mold Retread

Drive position retread designed to offer exceptional SmartWay® fuel economy⁽¹⁾ with leading tread life and traction in a line haul application.

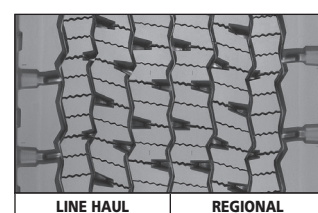


LINE HAUL

XDA2 23 AT Pre-Mold Retread

Drive position retread designed for fuel savings, durability, and all-weather traction for line haul applications.

AT designated Advanced Technology Compounds for fuel savings.

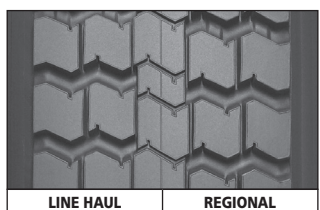


LINE HAUL

REGIONAL

X ONE LINE GRIP D Pre-Mold Retread

Long-wearing Michelin X One drive retread with outstanding traction for line haul and regional applications.



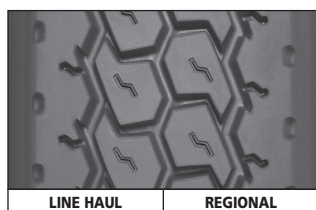
LINE HAUL

REGIONAL

XDC 22

Pre-Mold Retread

Drive position retread with well-balanced properties designed for excellent wear and traction in line haul and regional applications.



LINE HAUL

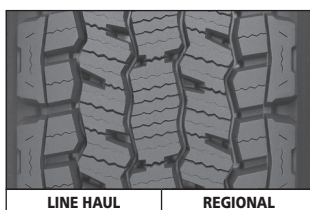
REGIONAL

XDHT

Pre-Mold Retread

Drive position retread designed for line haul and regional applications.

Available siped.



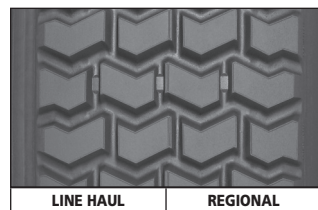
LINE HAUL

REGIONAL

XDN2

Pre-Mold Retread

All-weather drive retread optimized for exceptional traction and mileage.



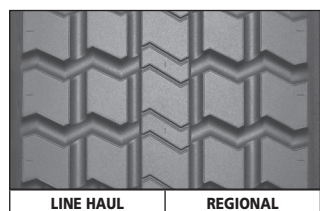
LINE HAUL

REGIONAL

XM+S4

Pre-Mold Retread

Drive position retread with well-balanced properties designed for enhanced traction, especially in snow and mud conditions, for line haul and regional applications.



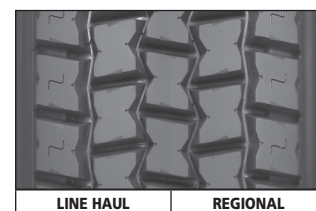
LINE HAUL

REGIONAL

CD-LL

Pre-Mold Retread

Drive position retread with well-balanced properties designed for trade-in vehicles in regional and line haul applications.



LINE HAUL

REGIONAL

XD4

Pre-Mold Retread

Drive position retread designed for high torque conditions, e.g. 4x2's, in line haul and regional applications.



REGIONAL

MD XDN2

Pre-Mold Retread

Drive position retread optimized for traction and mileage for urban and regional light and medium duty vehicles with 16" to 19.5" tires.*

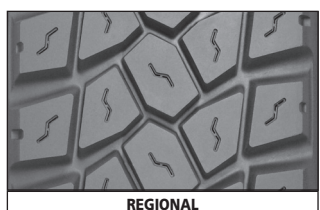
* Speed limit of 87 mph for the 190-200 mm size.



REGIONAL

X® MULTI ENERGY D Pre-Mold Retread

High mileage, fuel efficient⁽¹⁾ SmartWay® verified drive retread, optimized for regional and super regional applications.



REGIONAL

XDE M/S

Pre-Mold Retread

Drive position retread with well-balanced properties designed for enhanced traction, especially in muddy conditions, for regional applications.

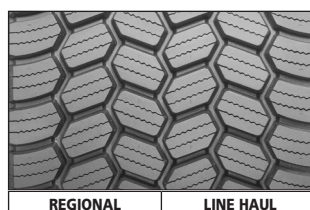


REGIONAL

XDS2+

Pre-Mold Retread

Delivers improved year-round drive axle traction, optimized for severe winter conditions.



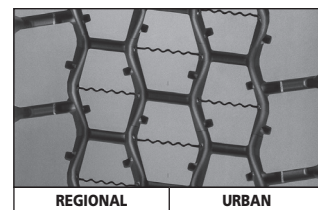
REGIONAL

LINE HAUL

X ONE XDS2

Pre-Mold Retread

Drive axle retread designed for extreme winter conditions to promote driver confidence and security while capitalizing on the enhanced fuel and weight savings of a next generation wide based tire.



REGIONAL

URBAN

X® MULTI D

Pre-Mold Retread

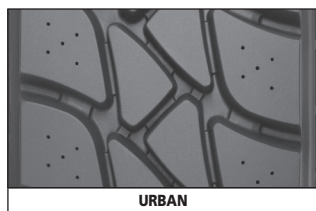
Regional drive retread designed for all-season traction without compromising high mileage to provide optimal total cost of ownership and driver satisfaction.



Directional tread

(1) Based on industry standard rolling resistance testing of comparable tires and retreads. Actual results may vary, and may be impacted by many factors, to include road conditions, weather and environment, driver performance, etc.

DRIVE RETREADS

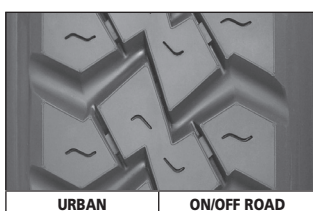


URBAN

XDUS

Pre-Mold Retread

Drive position retread designed with optimal scrub resistance for challenging urban applications.



URBAN

ON/OFF ROAD

XDY

Pre-Mold Retread

Drive position retread designed for on/off road, urban, and regional applications that demand rugged wear resistance.

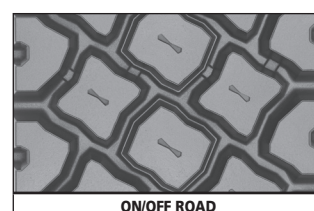


ON/OFF ROAD

X® WORKS D

Pre-Mold Retread

On/off Road drive position retread optimized for exceptional traction, toughness and wear performance in mixed and aggressive applications.



ON/OFF ROAD

XDY-EX

Pre-Mold Retread

Delivers exceptional durability and traction in demanding off-road applications.



DRIVE RETREADS

Tread Size	170	180	190	200	210	220	230	240	250	260	270
Size \ # DIE	168\#5	177\#6	194\#7	203\#8	211\#8.5N	219\#9	225\#9.5	232\#10	238\#10.5	252\#12	
CD LL						14/32" - 11 mm					
MD XDN 2			18/32" 14 mm			20/32" - 16 mm					
X® LINE ENERGY™ D						21/32" - 16.5 mm					
X® MULTI ENERGY™ D						21/32" - 17 mm					
X® MULTI D						28/32" - 22 mm					
X® WORKS D						30/32" - 24 mm					30/32" 24 mm
XD4						28/32" - 22 mm					
XDA2 23 AT ⁽¹⁾						23/32" - 18 mm					
XDC 22						22/32" - 17 mm					
XDE M/S	18/32" 14 mm		20/32" - 16 mm			22/32" - 17mm					
XDHT ⁽²⁾		19/32" 15 mm				23/32" - 18mm		23/32" 18 mm			
XDN 2						27/32" - 21.5 mm					
XDS 2+						25/32" - 20 mm					25/32" 20 mm
XDU S						32/32" - 25 mm					32/32" 25 mm
XDY						26/32" - 21 mm			32/32" 25 mm		
XDY-EX						32/32" - 25 mm					
XM+S4						21/32" - 16.5 mm					

X ONE DRIVE SIZES

Tread Size	375/425 ⁽³⁾	385/435 ⁽³⁾
X ONE LINE ENERGY D2	21/32" 16.5 mm	
X ONE LINE GRIP D	27/32" - 21 mm	
X ONE XDS 2	20/32" - 16 mm	

Product Availability (Tread Depth in Shaded Boxes)

Tread Size Size \ # DIE

For up-to-date product information please visit business.michelinman.com

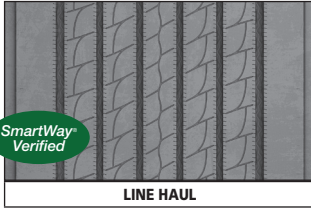
Retread tread selection should always consider the casing's original service application design and speed limit as published in that tire manufacturer's data book. Applying treads intended for a more severe service / speed application than the original casing design or that would imply a higher speed service than the casing's original speed rating, is generally not recommended.

(1) AT designated Advanced Technology Compounds for fuel savings.

(2) Available siped. Consult Michelin Retread Technologies dealers for availability.

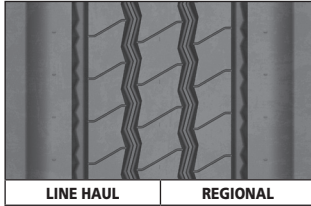
(3) Tread widths with two measurements have wings. The first number is tread base width in mm. The second number is the overall width, wing tip to tip.

TRAILER RETREADS



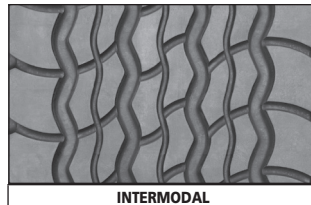
X ONE LINE ENERGY T2 Pre-Mold Retread

Designed for improved tread wear while providing durability and fuel savings⁽¹⁾ to lower your total cost of ownership (TCO).



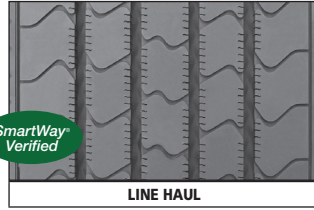
X ONE MULTI ENERGY T Pre-Mold Retread

Designed to address the scrub and stresses in spread axle applications while providing superior mileage performance in regional and line haul operations.



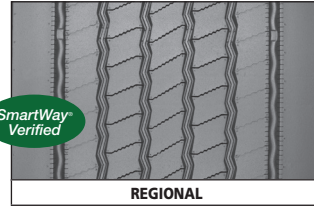
IT2 Pre-Mold Retread

All position trailer axle retread is designed for use in intermodal applications.



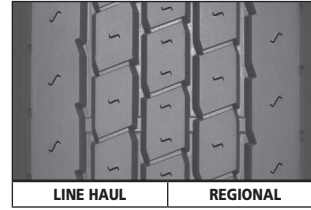
X® LINE ENERGY T Pre-Mold Retread

A premium trailer position retread for line haul applications, designed to provide fuel efficiency⁽²⁾ and long, even wear.



X ONE MULTI ENERGY T Pre-Mold Retread

A SmartWay® verified trailer position retread which ensures the right balance of outstanding removal mileage, reduced irregular wear and fuel efficiency,⁽³⁾ optimized for regional applications.



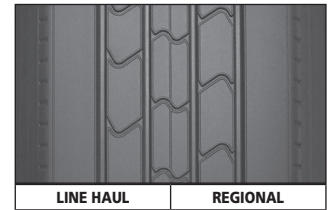
XTA Pre-Mold Retread

Trailer position retread designed to deliver good, all-purpose performance in line haul and regional applications.



XTE2 Wide Base Pre-Mold Retread

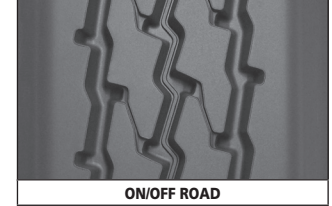
Designed to deliver strong durability and handling needed in demanding on/off road applications.



XTA-2 Pre-Mold Retread

SmartWay® verified trailer tread designed to deliver enhanced wear-life in regional and line haul service.

Available siped.



XTY SA Pre-Mold Retread

Trailer position retread designed to deliver strong wear resistance and traction in demanding on/off road applications, especially for spread-axle and multi-axle rigs.

TRAILER RETREADS

Tread Size	190	200	210	220	230	240	250	260
Size \ # DIE	194\#7	203\#8	211\#8.5N	219\#9	225\#9.5	232\#10	238\#10.5	252\#12
Spread Axle Sizes ⁽⁴⁾	185/225	195/235	205/245	215/255	225/265	245/285		
X® LINE ENERGY™ T		11/32" - 9 mm						
X® MULTI T SA		16/32" - 13 mm						
IT2		11/32" - 9 mm						
XTA						16/32" 13 mm		16/32" 13 mm
XTA-2 ⁽⁵⁾		11/32" - 9 mm						
XTY SA			22/32" - 17 mm					

(1) The U.S. EPA as part of their SmartWay® Program has demonstrated incremental fuel savings when low rolling resistance tires are used just on the tractor and/or just on the trailer. Actual results may vary, and may be impacted by many factors, to include road conditions, weather, environment, combination of steer and drive tires used, driving habits, tire size, equipment, and maintenance.

(2) Based on external rolling resistance tests of the Michelin X® Line Energy T Pre-Mold retread in 230 mm width and current Michelin XT-1 AT Pre-Mold retread in 225 mm width using ISO 28580 test method in tire size YOK RY617 295/75R22.5. Actual on-road fuel saving results may vary, and may be impacted by many factors, to include road conditions, weather, environment, combination of steer and trailer tires used, driving habits, tire size, equipment and maintenance.

(3) Based on industry standard rolling resistance testing of comparable tires and retreads. Actual results may vary, and may be impacted by many factors, to include road conditions, weather and environment, driver performance, etc.

(4) Tread widths with two measurements have wings. The first number is tread base width in mm. The second number is the overall width, wing tip to tip.

(5) Available siped. Consult Michelin Retread Technologies dealers for availability.

WIDE BASE AND X ONE TRAILER SIZES

Tread Size	290/345 ⁽⁴⁾	375/425 ⁽⁴⁾	385/435 ⁽⁴⁾
XTE2 Wide Base	20/32" - 16 mm		
X ONE LINE ENERGY T2		13/32" - 10.5 mm	
X ONE MULTI ENERGY T		15/32" - 12 mm	

Product Availability (Tread Depth in Shaded Boxes)

Tread Size Size \ # DIE Spread Axle Sizes

For up-to-date product information please visit business.michelinman.com

Retread tread selection should always consider the casing's original service application design and speed limit as published in that tire manufacturer's data book. Applying treads intended for a more severe service / speed application than the original casing design or that would imply a higher speed service than the casing's original speed rating, is generally not recommended.

MICHELIN RETREAD QUICK REFERENCE TREAD GUIDE

STANDARD SIZES

Tread Size
 Size \ # DIE
 Spread Axle Sizes

TREAD SIZE	RETREAD	POSITION	MSPN	TREAD DEPTH	
				32nds	mm
140	XZA	All-position	72464	13/32"	10.5 mm
150	XZA	All-position	95829	13/32"	10.5 mm
160	XZA	All-position	43903	13/32"	10.5 mm
168\#5	XZE	All-position	57118	18/32"	14 mm
170	XZA	All-position	48480	13/32"	10.5 mm
	XDE M/S	Drive	57384	18/32"	14 mm
177\#6	XZE	All-position	62459	18/32"	14 mm
180	XZA	All-position	53906	13/32"	10.5 mm
	XZA Siped	All-position	74087	13/32"	10.5 mm
	XDHT	Drive	44572	23/32"	18 mm
	XDE M/S	Drive	58140	18/32"	14 mm
185/225	X Multi T SA ⁽¹⁾	Trailer	13086	16/32"	13 mm
190	MD XDN2 ⁽²⁾	Drive	87625	18/32"	14 mm
	XDE M/S	Drive	04109	20/32"	16 mm
194\#7	XZA	All-position	71005	15/32"	12 mm
	XZA Siped	All-position	70659	15/32"	12 mm
	XZE	All-position	91791	18/32"	14 mm
	XZE Siped	All-position	90947	18/32"	14 mm
	XDHT	Drive	94558	23/32"	18 mm
	XTA-2	Trailer	74704	11/32"	9 mm
195/235	X Multi T SA ⁽¹⁾	Trailer	14000	16/32"	13 mm
200	MD XDN2 ⁽²⁾	Drive	88045	18/32"	14 mm
	XDE M/S	Drive	94728	20/32"	16 mm
	X Line Energy T	Trailer	68515	11/32"	9 mm
	X Line Energy T Siped	Trailer	22028	11/32"	9 mm
200 / 8	IT2	Trailer	06637	11/32"	9 mm
203\#8	XZA	All-position	92719	15/32"	12 mm
	XZA Siped	All-position	53937	15/32"	12 mm
	XZE	All-position	59028	18/32"	14 mm
	XZY	All-position	54622	18/32"	14 mm
	XDHT	Drive	54461	23/32"	18 mm
	XTA-2	Trailer	74861	11/32"	9 mm
205/245	X Multi T SA ⁽¹⁾	Trailer	14234	16/32"	13 mm
	XTY SA ⁽¹⁾	Trailer	36225	22/32"	17 mm
210	XZY3	All-position	40131	24/32"	19 mm
	XD4	Drive	92270	28/32"	22 mm
	MD XDN2 ⁽²⁾	Drive	88381	20/32"	16 mm
	XDE M/S	Drive	66838	22/32"	17 mm
	XDS2+	Drive	15860	25/32"	20 mm
	X Works D	Drive	12811	30/32"	24 mm
	X Line Energy T	Trailer	68646	11/32"	9 mm
	X Line Energy T Siped	Trailer	22707	11/32"	9 mm
210 / 8.5N	CD-LL	Drive	74178	14/32"	11 mm
	IT2	Trailer	24495	11/32"	9 mm
211\#8.5N	XZA	All-position	74565	15/32"	12 mm
	XZA Siped	All-position	56193	15/32"	12 mm
	XZE	All-position	86080	18/32"	14 mm
	XZE Siped	All-position	78892	18/32"	14 mm
	XZY	All-position	51695	18/32"	14 mm
	XDA2 23 AT	Drive	77114	23/32"	18 mm
	XDC 22	Drive	54426	22/32"	17 mm
	XDHT	Drive	65683	23/32"	18 mm
	XDHT Siped	Drive	91143	23/32"	18 mm
	XM+S4	Drive	64760	21/32"	16.5 mm
	XTA-2	Trailer	74922	11/32"	9 mm
	XTA-2 Siped	Trailer	75564	11/32"	9 mm
215/255	X Multi T SA ⁽¹⁾	Trailer	14882	16/32"	13 mm
	XTY SA ⁽¹⁾	Trailer	08911	22/32"	17 mm

(1) Tread widths with two measurements have wings. The first number is tread base width in mm. The second number is the overall width, wing tip to tip.

(2) Speed limit of 87 mph for the 190-200 mm size.

TREAD SIZE	RETREAD	POSITION	MSPN	TREAD DEPTH	
				32nds	mm
219\#9	XZA	All-position	85773	15/32"	12 mm
	XZA Siped	All-position	61685	15/32"	12 mm
	XZE	All-position	51733	18/32"	14 mm
	XZE Siped	All-position	50397	18/32"	14 mm
	XZY	All-position	61672	18/32"	14 mm
	XDA2 23 AT	Drive	59027	23/32"	18 mm
	XDC 22	Drive	96544	22/32"	17 mm
	XDHT	Drive	84811	23/32"	18 mm
	XDHT Siped	Drive	73107	23/32"	18 mm
	XM+S4	Drive	61591	21/32"	16.5 mm
220	XDY	Drive	65072	26/32"	21 mm
	XTA-2	Trailer	74947	11/32"	9 mm
	XTA-2 Siped	Trailer	75658	11/32"	9 mm
	XZUS	All-position	15997	26/32"	21 mm
	XZY3	All-position	41044	24/32"	19 mm
	XZY3 Siped	All-position	36037	24/32"	19 mm
	X Line Energy D	Drive	26837	21/32"	16.5 mm
	XD4	Drive	83674	28/32"	22 mm
	XDN2	Drive	15171	27/32"	21.5 mm
	X Multi Energy D	Drive	53432	21/32"	17 mm
220 / 9	MD XDN2	Drive	88997	20/32"	16 mm
	XDE M/S	Drive	94447	22/32"	17 mm
	XDS2+	Drive	16888	25/32"	20 mm
	X Multi D	Drive	17923	28/32"	22 mm
	XDUS	Drive	28156	32/32"	25 mm
	XDY-EX	Drive	50243	32/32"	25 mm
	X Works D	Drive	05291	30/32"	24 mm
	X Line Energy T	Trailer	69876	11/32"	9 mm
	X Line Energy T Siped	Trailer	22865	11/32"	9 mm
	CD-LL	Drive	61482	14/32"	11 mm
225/265	IT2	Trailer	43280	11/32"	9 mm
	X Multi T SA ⁽¹⁾	Trailer	16049	16/32"	13 mm
	XZA	All-position	94169	15/32"	12 mm
	XZA Siped	All-position	91816	15/32"	12 mm
	XZE	All-position	55240	18/32"	14 mm
	XZE Siped	All-position	70056	18/32"	14 mm
	XZY	All-position	66458	18/32"	14 mm
	XDA2 23 AT	Drive	60625	23/32"	18 mm
	XDC 22	Drive	84986	22/32"	17 mm
	XDHT	Drive	61815	23/32"	18 mm
225\#9.5	XDHT Siped	Drive	59826	23/32"	18 mm
	XM+S4	Drive	67565	21/32"	16.5 mm
	XDY	Drive	87485	26/32"	21 mm
	XTA-2	Trailer	75178	11/32"	9 mm
	XTA-2 Siped	Trailer	76406	11/32"	9 mm
	XZUS	All-position	19842	26/32"	21 mm
	XZY3	All-position	41385	24/32"	19 mm
	X Line Energy D	Drive	27357	21/32"	16.5 mm
	XD4	Drive	78304	28/32"	22 mm
	XDN2	Drive	87596	27/32"	21.5 mm
230	X Multi Energy D	Drive	54772	21/32"	17 mm
	MD XDN2 ⁽²⁾	Drive	89804	20/32"	16 mm
	XDE M/S	Drive	86443	22/32"	17 mm
	XDS2+	Drive	17019	25/32"	20 mm
	X Multi D	Drive	16430	28/32"	22 mm
	XDUS	Drive	15175	32/32"	25 mm
	XDY-EX	Drive	11534	32/32"	25 mm
	X WORKS D	Drive	65890	30/32"	24 mm
	X Line Energy T	Trailer	69941	11/32"	9 mm
	X Line Energy T Siped	Trailer	23546	11/32"	9 mm
230 / 9.5	CD-LL	Drive	57932	14/32"	11 mm
	IT2	Trailer	68299	11/32"	9 mm

MICHELIN RETREAD QUICK REFERENCE TREAD GUIDE

STANDARD SIZES

Tread Size
 Size \ # DIE
 Spread Axle Sizes

TREAD SIZE	RETREAD	POSITION	MSPN	TREAD DEPTH	
				32nds	mm
230 / 9.5	CD-LL	Drive	57932	14/32"	11 mm
	IT2	Trailer	68299	11/32"	9 mm
232\#10	XZY	All-position	92668	18/32"	14 mm
	XDA2 23 AT	Drive	80338	23/32	18 mm
	XDHT	Drive	87926	23/32"	18 mm
	XDY	Drive	48059	26/32"	21 mm
238\#10.5	XZY	All-position	47479	18/32"	14 mm
240	XZA	All-position	55653	20/32"	16 mm
	XZE	All-position	05814	18/32"	14 mm
	XZE Siped	All-position	07094	18/32"	14 mm
	XZE2+	All-position	14935	20/32"	16 mm
	XZU2 ⁽²⁾	All-position	11107	24/32"	20 mm
	XZUS	All-position	21725	26/32"	21 mm
	XZY3	All-position	43241	24/32"	19 mm
	X Line Energy D	Drive	27540	21/32"	16.5 mm
	XDHT	Drive	10984	23/32"	18 mm
	XDN2	Drive	22661	27/32"	21.5 mm
	X Multi Energy D	Drive	05189	21/32"	17 mm
	XDS2+	Drive	17405	25/32"	20 mm
	X Multi D	Drive	89939	28/32"	22 mm
	XDUS	Drive	13197	32/32"	25 mm
	XDY	Drive	70606	32/32"	25 mm
	XDY-EX	Drive	73643	32/32"	25 mm
	X Works D	Drive	24439	30/32"	24 mm
	X Line Energy T	Trailer	70128	11/32"	9 mm
	X Line Energy T Siped	Trailer	23951	11/32"	9 mm
	XTA	Trailer	26264	16/32"	13 mm
	XTA-2	Trailer	75540	11/32"	9 mm
	XTA-2 Siped	Trailer	76895	11/32"	9 mm
245/285	X Multi T SA ⁽¹⁾	Trailer	17117	16/32"	13 mm

(1) Tread widths with two measurements have wings. The first number is tread base width in mm. The second number is the overall width, wing tip to tip.

(2) Federal Motor Carrier Safety Regulations, 9 C.F.R. § 395.75 (d), specify that "no bus shall be operated with regrooved, recapped or retreaded tires on the front wheels."

TREAD SIZE	RETREAD	POSITION	MSPN	TREAD DEPTH	
				32nds	mm
250	XZE	All-position	06514	18/32"	14 mm
	XZE Siped	All-position	07732	18/32"	14 mm
	XZE2+	All-position	14439	20/32"	16 mm
	XZU2	All-position	11486	24/32"	20 mm
	XZUS	All-position	88244	26/32"	21 mm
	XZY	All-position	64343	20/32"	16 mm
	XZY3	All-position	48547	24/32"	19 mm
	XDN2	Drive	11114	27/32"	21.5 mm
	XDS2+	Drive	17979	25/32"	20 mm
	X Multi D	Drive	49017	28/32"	22 mm
	XDUS	Drive	17883	32/32"	25 mm
	X Works D	Drive	50960	30/32"	24 mm
	X Line Energy T	Trailer	70263	11/32"	9 mm
	X Line Energy T Siped	Trailer	24032	11/32"	9 mm
252\#12.0	XDY	Drive	88519	32/32"	25 mm
260	XZE2+	All-position	03079	20/32"	16 mm
	XDN2	Drive	12012	27/32"	21.5 mm
	X Multi D	Drive	49862	28/32"	22 mm
270	XTA	Trailer	24867	16/32"	13 mm
	XZUS	All-position	13656	26/32"	21 mm
	XZY3	All-position	48974	24/32"	19 mm
	XDN2	Drive	12230	27/32"	21.5 mm
	XDS2+	Drive	10766	25/32"	20 mm
	XDUS	Drive	22587	32/32"	25 mm
280	X Works D	Drive	36616	30/32"	24 mm
280	XZUS	All-position	68447	26/32"	21 mm

WIDE BASE AND X ONE TRAILER SIZES

TREAD SIZE	RETREAD	POSITION	MSPN	TREAD DEPTH	
				32nds	mm
290	X Tweek	All-position	64012	32/32"	15 mm
290/345	XZA Wide Base ⁽¹⁾	All-position	07525	19/32"	15 mm
290/345	XZY3 Wide Base ⁽¹⁾	All-position	65721	22/32"	17 mm
290/345	XTE2 Wide Base ⁽¹⁾	Trailer	34507	20/32"	16 mm
320/365	XZA Wide Base ⁽¹⁾	All-position	08650	19/32"	15 mm
320/365	XZY Wide Base ⁽¹⁾	All-position	30949	20/32"	16 mm
350/395	XZL Wide Base ⁽¹⁾	All-position	75413	30/32"	24 mm
375/425	X One XDS2 ^(1,2)	Drive	43487	25/32"	20 mm
375/425	X One Line Energy D2 ⁽¹⁾	Drive	77863	22/32"	17 mm
375/425	X One Line Grip D ⁽¹⁾	Drive	68622	27/32"	21 mm
375/425	X One Line Energy T2 ⁽¹⁾	Trailer	47715	13/32"	10.5 mm
375/425	X One Multi Energy T ⁽¹⁾	Trailer	55784	15/32"	12 mm
385/435	X One XZUS ⁽¹⁾	All-position	37269	23/32"	18 mm
385/435	X One XZUS+ ⁽¹⁾	All-position	71480	29/32"	23 mm
385/435	X One XDS2 ^(1,2)	Drive	19620	25/32"	20 mm
385/435	X One Line Grip D ⁽¹⁾	Drive	70235	27/32"	21 mm
385/435	X One Multi Energy T ⁽¹⁾	Trailer	84963	15/32"	12 mm

(1) Tread widths with two measurements have wings. The first number is tread base width in mm. The second number is the overall width, wing tip to tip.

(2) Meets the USTMA (U.S. Tire Manufacturers Association) snow traction performance requirements. Meets the Tire and Rubber Association of Canada (TRAC) requirements for severe snow traction.



To learn more please contact your Michelin Sales Representative or visit

US : business.michelinman.com or **CA :** business.michelin.ca/en/

United States: Michelin North America, Inc. One Parkway South, Greenville, SC 29615, 1-888-622-2306

Canada: Michelin North America (Canada), Inc. 2500 Daniel Johnson, Suite 500, Laval, Quebec H7T 2P6, 1-888-622-2306

©2024 Michelin North America, Inc. All rights reserved. An Equal Opportunity Employer ©2024 MNA(C). All rights reserved.

Michelin North America, Inc. reserves the right to change product specifications at any time without notice or obligations. PDF only (06/24)