

# **MICHELIN CROSSGRIP**



**RADIAL  
TIRE**

**MULTIPLE PURPOSE  
TIRE FOR 4-SEASON USE**



**CONSTRUCTION  
SEGMENT**



**MICHELIN**

# MICHELIN CROSSGRIP



## 1 VERSATILITY

**Multi-purpose use for all seasons**  
Non-directional tread pattern with deep biting tread grooves for multiple applications and special compound designed for 4-season usage

## 2 ENERGY EFFICIENCY

**Maximized handling on hard surface, high speed application**  
Michelin radial technology with enhanced 4 seasons rubber compound

## 3 COMFORT

**Unmatched handling on hard surfaces and traction on slippery surfaces**  
Unique tread enhanced positioning, geometry and angles

## TIRE CHARACTERISTICS



## ADDITIONAL INFORMATION

### VEHICLE EQUIPMENTS



A multi-purpose tire for use on the road, grass and snow with a special rubber formula allowing the tire to be used all year round

- Michelin Group  
Product Manager

### LEARN MORE

**ON THE WEB**  
[business.michelin.co.uk](https://business.michelin.co.uk)

**TESTIMONIALS**  
[youtube.com](https://youtube.com)

UPDATED JANUARY 2023

### TOOLS

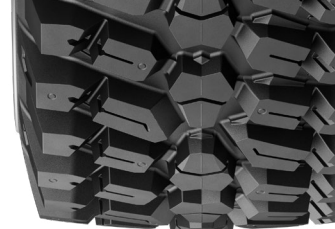
**BEYOND ROAD SELECTOR**  
[beyond-road.selector.michelingroup.com/CO](https://beyond-road.selector.michelingroup.com/CO)

### CONTACT

Please contact your local sales representative for more information.



## TECHNICAL CHARACTERISTICS



DESCRIPTION	CAI [MSPN]	Max. dist./ hour km [mile]	e mm [in]	D mm [in]	R' mm [in]	RC mm [in]	Tread depth mm [32rd]	Dual spacing mm [in]	75% Internal volume liter [gal]	Measuring recommended rim	Other approved rims <i>See end of document for more options</i>
<b>250/80 R16 124A8/120D IND TL</b>	564847 97221	-	259 10.2	804 31.5	364 14.3	2393 94.2	17 21	352 13.8	48 12.7	W8	W7, W9

<b>Bar</b>	<b>0.80</b>	<b>1.20</b>	<b>1.60</b>	<b>2.00</b>	<b>2.40</b>	<b>2.60</b>	<b>2.80</b>	<b>3.00</b>	<b>3.20</b>	<b>3.40</b>	<b>3.60</b>	<b>3.80</b>	<b>4.00</b>	<b>4.20</b>	<b>4.40</b>
<i>Psi</i>	12	17	23	29	35	38	41	44	46	49	52	55	58	61	64

Machine - use  
kg - lbs

### COMPACT WHEEL LOADER / BACKHOE LOADER / TELEHANDLER

STAT			1440	1760	2080	2240	2400	2560	2720	2880	3040	3200	3360	3520	3680
			3175	3880	4585	4940	5290	5645	5995	6350	6700	7055	7410	7760	8115
10 KM/H CYC.			940	1150	1355	1460	1565	1670	1770	1875	1980	2085	2190	2295	2400
6 MPH CYC.			2070	2535	2985	3220	3450	3680	3900	4135	4365	4595	4830	5060	5290
25 KM/H	625	740	850	1005	1160	1235	1315	1390	1465	1545	1620	1700	1775		
15 MPH	1380	1630	1875	2215	2555	2725	2900	3065	3230	3405	3570	3750	3915		
30 KM/H	615	720	820	965	1115	1185	1260	1335	1405	1480	1555	1625	1700		
20 MPH	1355	1585	1810	2125	2460	2610	2780	2945	3095	3265	3430	3585	3750		
40 KM/H	585	680	775	915	1050	1120	1190	1255	1325	1395	1465	1530	1600		
25 MPH	1290	1500	1710	2015	2315	2470	2625	2765	2920	3075	3230	3375	3525		
50 KM/H	680	775	915	1050	1120	1190	1255	1325	1395	1465	1530	1600			
30 MPH	1500	1710	1915	2215	2470	2625	2765	2920	3075	3230	3375	3525			
65 KM/H	545	665	790	910	970	1035	1095	1155	1215	1280	1340	1400			
40 MPH	1200	1465	1740	2005	2140	2280	2415	2545	2680	2820	2955	3085			

<b>340/80 R18 143A8/138D IND TL</b>	698283 31129	-	352 13.9	1000 39.2	452 17.8	2975 117.1	21 26	462 18.1	106 27.9	11	11SDC, 12, 12SDC W10, W11
-------------------------------------	-----------------	---	-------------	--------------	-------------	---------------	----------	-------------	-------------	----	---------------------------------

<b>Bar</b>	<b>0.80</b>	<b>1.20</b>	<b>1.60</b>	<b>2.00</b>	<b>2.40</b>	<b>2.60</b>	<b>2.80</b>	<b>3.00</b>	<b>3.20</b>	<b>3.40</b>	<b>3.60</b>	<b>3.80</b>	<b>4.00</b>	<b>4.20</b>	<b>4.40</b>
<i>Psi</i>	12	17	23	29	35	38	41	44	46	49	52	55	58	61	64

Machine - use  
kg - lbs

### COMPACT WHEEL LOADER / BACKHOE LOADER / TELEHANDLER

STAT			2450	2995	3540	3815	4090	4360	4635	4905	5180	5455	5725	6000	6270
			5400	6605	7805	8410	9015	9610	10220	10815	11420	12025	12620	13230	13825
10 KM/H CYC.			1600	1955	2310	2490	2670	2845	3025	3200	3380	3555	3735	3915	4090
6 MPH CYC.			3525	4310	5095	5490	5885	6270	6670	7055	7450	7835	8235	8630	9015
25 KM/H	1060	1255	1450	1715	1975	2105	2240	2370	2500	2630	2765	2895	3025		
15 MPH	2335	2765	3195	3780	4355	4640	4940	5225	5510	5800	6095	6380	6670		
30 KM/H	1045	1220	1390	1645	1900	2030	2155	2285	2410	2535	2665	2790	2915		
20 MPH	2305	2690	3065	3625	4190	4475	4750	5040	5315	5590	5875	6150	6425		
40 KM/H	1000	1160	1320	1550	1780	1895	2010	2125	2240	2360	2485	2605	2725		
25 MPH	2205	2555	2910	3415	3925	4180	4430	4685	4940	5205	5480	5745	6010		
50 KM/H	1160	1320	1555	1790	1905	2025	2140	2255	2375	2490	2610	2725			
30 MPH	2555	2910	3430	3945	4200	4465	4720	4970	5235	5490	5755	6010			
65 KM/H	930	1135	1335	1535	1635	1735	1835	1935	2035	2135	2235	2335			
40 MPH	2050	2500	2945	3385	3605	3825	4045	4265	4485	4705	4925	5150			

**IMPORTANT:** The inflation pressure is always determined according to the load per tire, speed and work to be carried out.

Stat: static load at 0 mph., vehicle stationary. 6 mph. Cyc: max. speed 6 mph. with cyclic load. 15, 20, 25, 30 and 40 mph.: use on the road up to 15, 20, 25, 30 and 40 mph.

### LEARN MORE

ON THE WEB  
[business.michelin.co.uk](http://business.michelin.co.uk)

TESTIMONIALS  
[youtube.com](http://youtube.com)

UPDATED JANUARY 2023

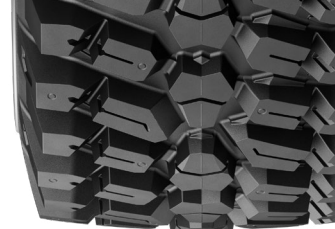
### CONTACT

Please contact your local sales representative for more information.



**MICHELIN**

## TECHNICAL CHARACTERISTICS



DESCRIPTION	CAI [MSPN]	Max. dist./ hour km [mile]	e mm [in]	D mm [in]	R' mm [in]	RC mm [in]	Tread depth mm [32rd]	Dual spacing mm [in]	75% Internal volume liter [gal]	Measuring recommended rim	Other approved rims <small>See end of document for more options</small>
<b>400/70 R20 149A8/144D IND TL</b>	866487 51626	-	403 15.9	1066 41.8	482 19	3169 124.8	24 30	536 21.1	142.5 37.6	DW13	DW13, W13

<b>Bar</b>	<b>0.80</b>	<b>1.20</b>	<b>1.60</b>	<b>2.00</b>	<b>2.40</b>	<b>2.60</b>	<b>2.80</b>	<b>3.00</b>	<b>3.20</b>	<b>3.40</b>	<b>3.60</b>	<b>3.80</b>	<b>4.00</b>	<b>4.20</b>	<b>4.40</b>
<i>Psi</i>	12	17	23	29	35	38	41	44	46	49	52	55	58	61	64

Machine - use  
kg - lbs **COMPACT WHEEL LOADER / BACKHOE LOADER / TELEHANDLER**

STAT			2930	3580	4230	4555	4880	5205	5530	5855	6180	6505	6830	7155	7480
			6460	7895	9325	10040	10760	11475	12190	12910	13625	14340	15060	15775	16490
10 KM/H CYC.			1910	2335	2760	2970	3180	3395	3605	3820	4030	4245	4455	4670	4880
6 MPH CYC.			4210	5150	6085	6550	7010	7485	7950	8420	8885	9360	9820	10295	10760
25 KM/H	1100	1410	1730	2045	2355	2510	2670	2825	2980	3140	3295	3455	3610		
15 MPH	2425	3110	3815	4510	5190	5535	5885	6230	6570	6925	7265	7615	7960		
30 KM/H	1050	1360	1660	1965	2265	2415	2570	2720	2870	3025	3175	3330	3480		
20 MPH	2315	3000	3660	4330	4995	5325	5665	5995	6325	6670	7000	7340	7670		
40 KM/H	990	1270	1550	1825	2100	2240	2375	2515	2650	2800	2950	3100	3250		
25 MPH	2185	2800	3415	4025	4630	4940	5235	5545	5840	6175	6505	6835	7165		
50 KM/H	1270	1550	1825	2100	2240	2375	2515	2650	2800	2950	3100	3250			
30 MPH	2800	3415	4025	4630	4940	5235	5545	5840	6175	6505	6835	7165			
65 KM/H	1100	1350	1595	1840	1960	2080	2205	2325	2445	2565	2680	2800			
40 MPH	2425	2975	3515	4055	4320	4585	4860	5125	5390	5655	5910	6175			

<b>360/80 R24 150A8/145D IND TL</b>	514449 15827	-	365 14.4	1192 46.7	545 21.5	3556 140	26 33	- -	150 39.6	DW12	W11
-------------------------------------	-----------------	---	-------------	--------------	-------------	-------------	----------	--------	-------------	------	-----

<b>Bar</b>	<b>0.80</b>	<b>1.20</b>	<b>1.60</b>	<b>2.00</b>	<b>2.40</b>	<b>2.60</b>	<b>2.80</b>	<b>3.00</b>	<b>3.20</b>	<b>3.40</b>	<b>3.60</b>	<b>3.80</b>	<b>4.00</b>	<b>4.20</b>	<b>4.40</b>
<i>Psi</i>	12	17	23	29	35	38	41	44	46	49	52	55	58	61	64

Machine - use  
kg - lbs **COMPACT WHEEL LOADER / BACKHOE LOADER / TELEHANDLER**

STAT			3020	3690	4360	4695	5025	5360	5695	6030	6365	6700	7035	7370	7705
			6660	8135	9610	10350	11080	11815	12555	13295	14030	14770	15510	16250	16985
10 KM/H CYC.			1970	2405	2840	3060	3280	3495	3715	3930	4150	4370	4590	4805	5025
6 MPH CYC.			4345	5300	6260	6745	7230	7705	8190	8665	9150	9635	10120	10595	11080
25 KM/H	1315	1545	1775	2100	2425	2585	2745	2910	3070	3235	3395	3560	3720		
15 MPH	2900	3405	3915	4630	5345	5700	6050	6415	6770	7130	7485	7850	8200		
30 KM/H	1295	1505	1715	2030	2340	2495	2655	2810	2965	3120	3275	3430	3585		
20 MPH	2855	3320	3780	4475	5160	5500	5855	6195	6535	6880	7220	7560	7905		
40 KM/H	1240	1435	1625	1915	2200	2345	2490	2630	2775	2920	3065	3205	3350		
25 MPH	2735	3165	3585	4220	4850	5170	5490	5800	6120	6435	6755	7065	7385		
50 KM/H	1435	1625	1915	2200	2345	2490	2630	2775	2920	3065	3205	3350			
30 MPH	3165	3585	4220	4850	5170	5490	5800	6120	6435	6755	7065	7385			
65 KM/H	1150	1395	1645	1895	2020	2145	2270	2395	2520	2650	2775	2900			
40 MPH	2535	3075	3625	4180	4455	4730	5005	5280	5555	5840	6120	6395			

**IMPORTANT:** The inflation pressure is always determined according to the load per tire, speed and work to be carried out.

Stat: static load at 0 mph., vehicle stationary. 6 mph. Cyc: max. speed 6 mph. with cyclic load. 15, 20, 25, 30 and 40 mph.: use on the road up to 15, 20, 25, 30 and 40 mph.

### LEARN MORE

ON THE WEB  
[business.michelin.co.uk](http://business.michelin.co.uk)

TESTIMONIALS  
[youtube.com](http://youtube.com)

UPDATED JANUARY 2023

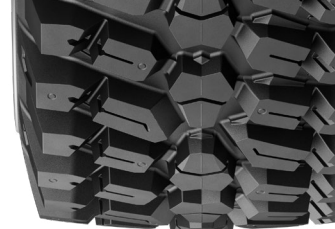
### CONTACT

Please contact your local sales representative for more information.



**MICHELIN**

## TECHNICAL CHARACTERISTICS



DESCRIPTION	CAI [MSPN]	Max. dist./ hour km [mile]	e mm [in]	D mm [in]	R' mm [in]	RC mm [in]	Tread depth mm [32rd]	Dual spacing mm [in]	75% Internal volume liter [gal]	Measuring recommended rim	Other approved rims <small>See end of document for more options</small>
<b>400/80 R24 156A8/151D IND TL</b>	920345 76135	-	413 16.3	1240 48.6	561 22.1	3689 145.2	26 33	536 21.1	187 49.3	DW13L	DW12, DW14L

<b>Bar</b>	<b>0.80</b>	<b>1.20</b>	<b>1.60</b>	<b>2.00</b>	<b>2.40</b>	<b>2.60</b>	<b>2.80</b>	<b>3.00</b>	<b>3.20</b>	<b>3.40</b>	<b>3.60</b>	<b>3.80</b>	<b>4.00</b>	<b>4.20</b>	<b>4.40</b>
<i>Psi</i>	12	17	23	29	35	38	41	44	46	49	52	55	58	61	64

Machine - use  
kg - lbs **COMPACT WHEEL LOADER / BACKHOE LOADER / TELEHANDLER**

STAT			3600	4400	5200	5600	6000	6400	6800	7200	7600	8000	8400	8800	9200
			7935	9700	11465	12345	13230	14110	14990	15875	16755	17635	18520	19400	20285
10 KM/H CYC.			2340	2860	3385	3645	3905	4165	4430	4690	4950	5215	5475	5740	6000
6 MPH CYC.			5160	6305	7465	8035	8610	9180	9765	10340	10915	11495	12070	12655	13230
25 KM/H	1550	1835	2120	2450	2775	2940	3100	3265	3430	3665	3905	4140	4375		
15 MPH	3415	4045	4675	5400	6120	6480	6835	7200	7560	8080	8610	9125	9645		
30 KM/H	1525	1795	2060	2385	2710	2875	3035	3200	3360	3590	3825	4055	4290		
20 MPH	3360	3955	4540	5260	5975	6340	6690	7055	7410	7915	8435	8940	9460		
40 KM/H	1460	1705	1950	2290	2635	2805	2975	3145	3315	3490	3660	3830	4000		
25 MPH	3220	3760	4300	5050	5810	6185	6560	6935	7310	7695	8070	8445	8820		
50 KM/H	1705	1950	2290	2635	2805	2975	3145	3315	3490	3660	3830	4000			
30 MPH	3760	4300	5050	5810	6185	6560	6935	7310	7695	8070	8445	8820			
65 KM/H	1355	1640	1930	2225	2370	2515	2660	2805	2965	3130	3290	3450			
40 MPH	2985	3615	4255	4905	5225	5545	5865	6185	6535	6900	7255	7605			

<b>440/80 R24 161A8/156D IND TL</b>	131846 74806	-	447 17.8	1314 51.5	592 23.3	3906 153.8	26 33	580 22.8	234 61.8	DW14	14, DW15L
-------------------------------------	-----------------	---	-------------	--------------	-------------	---------------	----------	-------------	-------------	------	-----------

<b>Bar</b>	<b>0.80</b>	<b>1.20</b>	<b>1.60</b>	<b>2.00</b>	<b>2.40</b>	<b>2.60</b>	<b>2.80</b>	<b>3.00</b>	<b>3.20</b>	<b>3.40</b>	<b>3.60</b>	<b>3.80</b>	<b>4.00</b>	<b>4.20</b>	<b>4.40</b>
<i>Psi</i>	12	17	23	29	35	38	41	44	46	49	52	55	58	61	64

Machine - use  
kg - lbs **COMPACT WHEEL LOADER / BACKHOE LOADER / TELEHANDLER**

STAT			4160	5085	6010	6475	6940	7400	7865	8325	8790	9255	9715	10180	10640
			9170	11210	13250	14275	15300	16315	17340	18355	19380	20405	21420	22445	23455
10 KM/H CYC.			2710	3315	3920	4220	4525	4825	5125	5430	5730	6035	6335	6640	6940
6 MPH CYC.			5975	7310	8640	9305	9975	10635	11300	11970	12630	13305	13965	14640	15300
25 KM/H	1800	2130	2460	2905	3350	3575	3795	4020	4240	4465	4685	4910	5130		
15 MPH	3970	4695	5425	6405	7385	7880	8365	8865	9350	9845	10330	10825	11310		
30 KM/H	1770	2070	2370	2800	3230	3445	3660	3875	4090	4305	4520	4735	4950		
20 MPH	3900	4565	5225	6175	7120	7595	8070	8545	9015	9490	9965	10440	10915		
40 KM/H	1700	1970	2240	2640	3035	3235	3435	3630	3830	4030	4230	4425	4625		
25 MPH	3750	4345	4940	5820	6690	7130	7575	8005	8445	8885	9325	9755	10195		
50 KM/H	1970	2240	2640	3035	3235	3435	3630	3830	4030	4230	4425	4625			
30 MPH	4345	4940	5820	6690	7130	7575	8005	8445	8885	9325	9755	10195			
65 KM/H	1575	1880	2235	2585	2765	2940	3115	3295	3470	3645	3825	4000			
40 MPH	3470	4145	4925	5700	6095	6480	6865	7265	7650	8035	8435	8820			

**IMPORTANT:** The inflation pressure is always determined according to the load per tire, speed and work to be carried out.

Stat: static load at 0 mph., vehicle stationary. 6 mph. Cyc: max. speed 6 mph. with cyclic load. 15, 20, 25, 30 and 40 mph.: use on the road up to 15, 20, 25, 30 and 40 mph.

### LEARN MORE

ON THE WEB  
[business.michelin.co.uk](http://business.michelin.co.uk)

TESTIMONIALS  
[youtube.com](http://youtube.com)

UPDATED JANUARY 2023

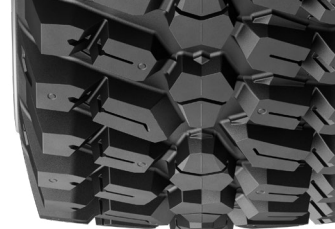
### CONTACT

Please contact your local sales representative for more information.



**MICHELIN**

## TECHNICAL CHARACTERISTICS



DESCRIPTION	CAI [MSPN]	Max. dist./ hour km [mile]	e mm [in]	D mm [in]	R' mm [in]	RC mm [in]	Tread depth mm [32rd]	Dual spacing mm [in]	75% Internal volume liter [gal]	Measuring recommended rim	Other approved rims  <i>See end of document for more options</i>
<b>460/70 R24 159A8/154D IND TL</b>	<b>304047</b> 11050	-	<b>475</b> 18.7	<b>1246</b> 48.9	<b>564</b> 22.2	<b>3708</b> 146	<b>26</b> 33	<b>597</b> 23.5	<b>217</b> 57.4	<b>DW15L</b>	<b>14, 16, DW14L, DW16A, TW14L</b>

<b>Bar</b>	<b>0.80</b>	<b>1.20</b>	<b>1.60</b>	<b>2.00</b>	<b>2.40</b>	<b>2.60</b>	<b>2.80</b>	<b>3.00</b>	<b>3.20</b>	<b>3.40</b>	<b>3.60</b>	<b>3.80</b>	<b>4.00</b>	<b>4.20</b>	<b>4.40</b>
<i>Psi</i>	12	17	23	29	35	38	41	44	46	49	52	55	58	61	64

Machine - use  
kg - lbs **COMPACT WHEEL LOADER / BACKHOE LOADER / TELEHANDLER**

STAT			3940	4815	5690	6125	6560	7000	7435	7875	8310	8750	9185	9625	10060
			8685	10615	12545	13505	14460	15430	16390	17360	18320	19290	20250	21220	22180
<b>10 KM/H CYC.</b>			<b>2570</b>	<b>3140</b>	<b>3710</b>	<b>3995</b>	<b>4280</b>	<b>4565</b>	<b>4850</b>	<b>5135</b>	<b>5420</b>	<b>5705</b>	<b>5990</b>	<b>6275</b>	<b>6560</b>
<i>6 MPH CYC.</i>			5665	6925	8180	8805	9435	10065	10690	11320	11950	12575	13205	13835	14460
<b>25 KM/H</b>	<b>1715</b>	<b>2020</b>	<b>2320</b>	<b>2745</b>	<b>3165</b>	<b>3375</b>	<b>3585</b>	<b>3800</b>	<b>4010</b>	<b>4225</b>	<b>4435</b>	<b>4650</b>	<b>4860</b>		
<i>15 MPH</i>	3780	4455	5115	6050	6980	7440	7905	8380	8840	9315	9780	10250	10715		
<b>30 KM/H</b>	<b>1685</b>	<b>1965</b>	<b>2240</b>	<b>2650</b>	<b>3055</b>	<b>3260</b>	<b>3460</b>	<b>3665</b>	<b>3870</b>	<b>4075</b>	<b>4275</b>	<b>4480</b>	<b>4680</b>		
<i>20 MPH</i>	3715	4330	4940	5840	6735	7185	7630	8080	8530	8985	9425	9875	10320		
<b>40 KM/H</b>	<b>1615</b>	<b>1870</b>	<b>2120</b>	<b>2495</b>	<b>2870</b>	<b>3060</b>	<b>3250</b>	<b>3435</b>	<b>3625</b>	<b>3810</b>	<b>4000</b>	<b>4185</b>	<b>4375</b>		
<i>25 MPH</i>	3560	4125	4675	5500	6325	6745	7165	7575	7990	8400	8820	9225	9645		
<b>50 KM/H</b>	<b>1870</b>	<b>2120</b>	<b>2495</b>	<b>2870</b>	<b>3060</b>	<b>3250</b>	<b>3435</b>	<b>3625</b>	<b>3810</b>	<b>4000</b>	<b>4185</b>	<b>4375</b>			
<i>30 MPH</i>	4125	4675	5500	6325	6745	7165	7575	7990	8400	8820	9225	9645			
<b>65 KM/H</b>	<b>1500</b>	<b>1820</b>	<b>2140</b>	<b>2465</b>	<b>2625</b>	<b>2785</b>	<b>2945</b>	<b>3105</b>	<b>3270</b>	<b>3430</b>	<b>3590</b>	<b>3750</b>			
<i>40 MPH</i>	3305	4010	4720	5435	5785	6140	6495	6845	7210	7560	7915	8265			

<b>500/70 R24 164A8/159D IND TL</b>	<b>875270</b> 63574	-	<b>513</b> 20.2	<b>1292</b> 50.7	<b>579</b> 22.8	<b>3836</b> 151	<b>26</b> 33	<b>654</b> 25.7	<b>264</b> 69.7	<b>DW16A</b>	<b>DW15L, DW16L, TW16L</b>
-------------------------------------	------------------------	---	--------------------	---------------------	--------------------	--------------------	-----------------	--------------------	--------------------	--------------	--------------------------------

<b>Bar</b>	<b>0.80</b>	<b>1.20</b>	<b>1.60</b>	<b>2.00</b>	<b>2.40</b>	<b>2.60</b>	<b>2.80</b>	<b>3.00</b>	<b>3.20</b>	<b>3.40</b>	<b>3.60</b>	<b>3.80</b>	<b>4.00</b>	<b>4.20</b>	<b>4.40</b>
<i>Psi</i>	12	17	23	29	35	38	41	44	46	49	52	55	58	61	64

Machine - use  
kg - lbs **COMPACT WHEEL LOADER / BACKHOE LOADER / TELEHANDLER**

STAT			4505	5505	6500	7000	7500	8000	8495	8995	9495	9995	10495	10995	11495
			9930	12135	14330	15430	16535	17635	18730	19830	20935	22035	23140	24240	25340
<b>10 KM/H CYC.</b>			<b>2935</b>	<b>3585</b>	<b>4240</b>	<b>4565</b>	<b>4890</b>	<b>5215</b>	<b>5545</b>	<b>5870</b>	<b>6195</b>	<b>6520</b>	<b>6845</b>	<b>7170</b>	<b>7495</b>
<i>6 MPH CYC.</i>			6470	7905	9350	10065	10780	11495	12225	12940	13660	14375	15090	15805	16525
<b>25 KM/H</b>	<b>1950</b>	<b>2300</b>	<b>2650</b>	<b>3135</b>	<b>3620</b>	<b>3860</b>	<b>4100</b>	<b>4345</b>	<b>4585</b>	<b>4830</b>	<b>5070</b>	<b>5315</b>	<b>5555</b>		
<i>15 MPH</i>	4300	5070	5840	6910	7980	8510	9040	9580	10110	10650	11175	11720	12245		
<b>30 KM/H</b>	<b>1920</b>	<b>2240</b>	<b>2560</b>	<b>3025</b>	<b>3495</b>	<b>3725</b>	<b>3960</b>	<b>4190</b>	<b>4425</b>	<b>4655</b>	<b>4890</b>	<b>5120</b>	<b>5350</b>		
<i>20 MPH</i>	4235	4940	5645	6670	7705	8210	8730	9235	9755	10265	10780	11290	11795		
<b>40 KM/H</b>	<b>1840</b>	<b>2135</b>	<b>2425</b>	<b>2855</b>	<b>3285</b>	<b>3500</b>	<b>3715</b>	<b>3925</b>	<b>4140</b>	<b>4355</b>	<b>4570</b>	<b>4785</b>	<b>5000</b>		
<i>25 MPH</i>	4055	4705	5345	6295	7240	7715	8190	8655	9125	9600	10075	10550	11025		
<b>50 KM/H</b>	<b>2135</b>	<b>2425</b>	<b>2855</b>	<b>3285</b>	<b>3500</b>	<b>3715</b>	<b>3925</b>	<b>4140</b>	<b>4355</b>	<b>4570</b>	<b>4785</b>	<b>5000</b>			
<i>30 MPH</i>	4705	5345	6295	7240	7715	8190	8655	9125	9600	10075	10550	11025			
<b>65 KM/H</b>	<b>1710</b>	<b>2080</b>	<b>2450</b>	<b>2815</b>	<b>3000</b>	<b>3185</b>	<b>3365</b>	<b>3550</b>	<b>3735</b>	<b>3920</b>	<b>4100</b>	<b>4285</b>			
<i>40 MPH</i>	3770	4585	5400	6205	6615	7020	7420	7825	8235	8640	9040	9445			

**IMPORTANT:** The inflation pressure is always determined according to the load per tire, speed and work to be carried out.

Stat: static load at 0 mph., vehicle stationary. 6 mph. Cyc: max. speed 6 mph. with cyclic load. 15, 20, 25, 30 and 40 mph.: use on the road up to 15, 20, 25, 30 and 40 mph.

### LEARN MORE

ON THE WEB  
[business.michelin.co.uk](http://business.michelin.co.uk)

TESTIMONIALS  
[youtube.com](http://youtube.com)

UPDATED JANUARY 2023

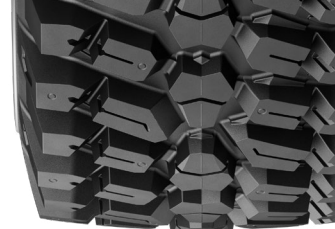
### CONTACT

Please contact your local sales representative for more information.



**MICHELIN**

## TECHNICAL CHARACTERISTICS



DESCRIPTION	CAI [MSPN]	Max. dist./ hour km [mile]	e mm [in]	D mm [in]	R' mm [in]	RC mm [in]	Tread depth mm [32rd]	Dual spacing mm [in]	75% Internal volume liter [gal]	Measuring recommended rim	Other approved rims <i>See end of document for more options</i>
<b>480/80 R26 167A8/162D IND TL</b>	<b>427974</b> 84579	-	<b>503</b> 19.8	<b>1423</b> 55.8	<b>643</b> 25.3	<b>4234</b> 166.7	<b>25</b> 31	<b>626</b> 24.6	<b>302.2</b> 79.8	<b>DW16A</b>	<b>DW15L</b>

<b>Bar</b>	<b>0.80</b>	<b>1.20</b>	<b>1.60</b>	<b>2.00</b>	<b>2.40</b>	<b>2.60</b>	<b>2.80</b>	<b>3.00</b>	<b>3.20</b>	<b>3.40</b>	<b>3.60</b>	<b>3.80</b>	<b>4.00</b>	<b>4.20</b>	<b>4.40</b>
<i>Psi</i>	12	17	23	29	35	38	41	44	46	49	52	55	58	61	64

Machine - use  
kg - lbs **COMPACT WHEEL LOADER / BACKHOE LOADER / TELEHANDLER**

STAT			4900	5990	7080	7625	8170	8715	9260	9805	10350	10895	11440	11985	12530
			10805	13205	15610	16810	18010	19215	20415	21615	22820	24020	25220	26420	27625
<b>10 KM/H CYC.</b>			<b>3200</b>	<b>3910</b>	<b>4620</b>	<b>4975</b>	<b>5330</b>	<b>5685</b>	<b>6040</b>	<b>6395</b>	<b>6750</b>	<b>7105</b>	<b>7460</b>	<b>7815</b>	<b>8170</b>
<i>6 MPH CYC.</i>			7055	8620	10185	10970	11750	12535	13315	14100	14880	15665	16445	17230	18010
<b>25 KM/H</b>	<b>1840</b>	<b>2370</b>	<b>2890</b>	<b>3420</b>	<b>3945</b>	<b>4210</b>	<b>4475</b>	<b>4735</b>	<b>5000</b>	<b>5265</b>	<b>5525</b>	<b>5790</b>	<b>6050</b>		
<i>15 MPH</i>	4055	5225	6370	7540	8695	9280	9865	10440	11025	11605	12180	12765	13340		
<b>30 KM/H</b>	<b>1770</b>	<b>2280</b>	<b>2790</b>	<b>3300</b>	<b>3805</b>	<b>4060</b>	<b>4315</b>	<b>4565</b>	<b>4820</b>	<b>5075</b>	<b>5330</b>	<b>5580</b>	<b>5835</b>		
<i>20 MPH</i>	3900	5025	6150	7275	8390	8950	9515	10065	10625	11190	11750	12300	12865		
<b>40 KM/H</b>	<b>1660</b>	<b>2130</b>	<b>2575</b>	<b>3055</b>	<b>3540</b>	<b>3780</b>	<b>4020</b>	<b>4260</b>	<b>4500</b>	<b>4740</b>	<b>4975</b>	<b>5215</b>	<b>5450</b>		
<i>25 MPH</i>	3660	4695	5675	6735	7805	8335	8865	9390	9920	10450	10970	11495	12015		
<b>50 KM/H</b>	<b>2130</b>	<b>2640</b>	<b>3120</b>	<b>3595</b>	<b>3835</b>	<b>4070</b>	<b>4310</b>	<b>4550</b>	<b>4775</b>	<b>5000</b>	<b>5225</b>	<b>5450</b>			
<i>30 MPH</i>	4695	5820	6880	7925	8455	8975	9500	10030	10525	11025	11520	12015			
<b>65 KM/H</b>	<b>1850</b>	<b>2270</b>	<b>2680</b>	<b>3085</b>	<b>3290</b>	<b>3490</b>	<b>3695</b>	<b>3900</b>	<b>4115</b>	<b>4325</b>	<b>4540</b>	<b>4750</b>			
<i>40 MPH</i>	4695	5005	5910	6800	7255	7695	8145	8600	9070	9535	10010	10470			

<b>400/80 R28 158A8/153D IND TL</b>	<b>219659</b> 38141	-	<b>412</b> 16.2	<b>1354</b> 53.1	<b>616</b> 24.3	<b>4034</b> 158.8	<b>26</b> 33	<b>536</b> 21.1	<b>159</b> 42	<b>DW13</b>	<b>DW11, W12, W13</b>
-------------------------------------	------------------------	---	--------------------	---------------------	--------------------	----------------------	-----------------	--------------------	------------------	-------------	---------------------------

<b>Bar</b>	<b>0.80</b>	<b>1.20</b>	<b>1.60</b>	<b>2.00</b>	<b>2.40</b>	<b>2.60</b>	<b>2.80</b>	<b>3.00</b>	<b>3.20</b>	<b>3.40</b>	<b>3.60</b>	<b>3.80</b>	<b>4.00</b>	<b>4.20</b>	<b>4.40</b>
<i>Psi</i>	12	17	23	29	35	38	41	44	46	49	52	55	58	61	64

Machine - use  
kg - lbs **COMPACT WHEEL LOADER / BACKHOE LOADER / TELEHANDLER**

STAT			3830	4680	5530	5955	6375	6800	7225	7650	8075	8500	8925	9350	9775
			8445	10320	12190	13130	14055	14990	15930	16865	17800	18740	19675	20615	21550
<b>10 KM/H CYC.</b>			<b>2500</b>	<b>3055</b>	<b>3605</b>	<b>3885</b>	<b>4160</b>	<b>4435</b>	<b>4710</b>	<b>4990</b>	<b>5265</b>	<b>5545</b>	<b>5820</b>	<b>6100</b>	<b>6375</b>
<i>6 MPH CYC.</i>			5510	6735	7950	8565	9170	9780	10385	11000	11605	12225	12830	13450	14055
<b>25 KM/H</b>	<b>1660</b>	<b>1960</b>	<b>2255</b>	<b>2665</b>	<b>3075</b>	<b>3280</b>	<b>3485</b>	<b>3690</b>	<b>3895</b>	<b>4100</b>	<b>4310</b>	<b>4515</b>	<b>4720</b>		
<i>15 MPH</i>	3660	4320	4970	5875	6780	7230	7685	8135	8585	9040	9500	9955	10405		
<b>30 KM/H</b>	<b>1635</b>	<b>1905</b>	<b>2175</b>	<b>2570</b>	<b>2970</b>	<b>3165</b>	<b>3365</b>	<b>3560</b>	<b>3760</b>	<b>3955</b>	<b>4155</b>	<b>4350</b>	<b>4545</b>		
<i>20 MPH</i>	3605	4200	4795	5665	6550	6980	7420	7850	8290	8720	9160	9590	10020		
<b>40 KM/H</b>	<b>1565</b>	<b>1815</b>	<b>2060</b>	<b>2425</b>	<b>2790</b>	<b>2975</b>	<b>3155</b>	<b>3340</b>	<b>3520</b>	<b>3705</b>	<b>3885</b>	<b>4070</b>	<b>4250</b>		
<i>25 MPH</i>	3450	4000	4540	5345	6150	6560	6955	7365	7760	8170	8565	8975	9370		
<b>50 KM/H</b>	<b>1815</b>	<b>2060</b>	<b>2425</b>	<b>2790</b>	<b>2975</b>	<b>3155</b>	<b>3340</b>	<b>3520</b>	<b>3705</b>	<b>3885</b>	<b>4070</b>	<b>4250</b>			
<i>30 MPH</i>	4000	4540	5345	6150	6560	6955	7365	7760	8170	8565	8975	9370			
<b>65 KM/H</b>	<b>1455</b>	<b>1770</b>	<b>2085</b>	<b>2395</b>	<b>2550</b>	<b>2710</b>	<b>2865</b>	<b>3020</b>	<b>3175</b>	<b>3335</b>	<b>3490</b>	<b>3645</b>			
<i>40 MPH</i>	3210	3900	4595	5280	5620	5975	6315	6660	7000	7350	7695	8035			

**IMPORTANT:** The inflation pressure is always determined according to the load per tire, speed and work to be carried out.

Stat: static load at 0 mph., vehicle stationary. 6 mph. Cyc: max. speed 6 mph. with cyclic load. 15, 20, 25, 30 and 40 mph.: use on the road up to 15, 20, 25, 30 and 40 mph.

### LEARN MORE

ON THE WEB  
[business.michelin.co.uk](http://business.michelin.co.uk)

TESTIMONIALS  
[youtube.com](http://youtube.com)

UPDATED JANUARY 2023

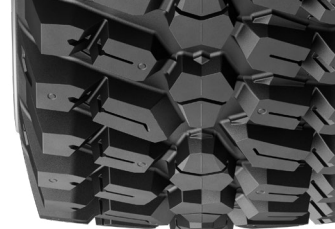
### CONTACT

Please contact your local sales representative for more information.



**MICHELIN**

## TECHNICAL CHARACTERISTICS



DESCRIPTION	CAI [MSPN]	Max. dist./ hour km [mile]	e mm [in]	D mm [in]	R' mm [in]	RC mm [in]	Tread depth mm [32rd]	Dual spacing mm [in]	75% Internal volume liter [gal]	Measuring recommended rim	Other approved rims <i>See end of document for more options</i>
<b>440/80 R28 163A8/158D IND TL</b>	439765 52613	-	450 17.5	1410 55.3	635 25	4197 165.2	26 33	580 22.8	259 68.3	DW14L	DW15L

<b>Bar</b>	<b>0.80</b>	<b>1.20</b>	<b>1.60</b>	<b>2.00</b>	<b>2.40</b>	<b>2.60</b>	<b>2.80</b>	<b>3.00</b>	<b>3.20</b>	<b>3.40</b>	<b>3.60</b>	<b>3.80</b>	<b>4.00</b>	<b>4.20</b>	<b>4.40</b>
<i>Psi</i>	12	17	23	29	35	38	41	44	46	49	52	55	58	61	64

Machine - use  
kg - lbs **COMPACT WHEEL LOADER / BACKHOE LOADER / TELEHANDLER**

STAT			4370	5485	6605	7165	7720	8280	8840	9395	9955	10515	11075	11630	12190
			9635	12090	14560	15795	17020	18255	19490	20710	21945	23180	24415	25640	26875
10 KM/H CYC.			2850	3700	4550	4975	5400	5825	6250	6675	7100	7525	7950		
6 MPH CYC.			6285	8155	10030	10970	11905	12840	13780	14715	15655	16590	17525		
25 KM/H	1925	2275	2620	3090	3565	3800	4035	4270	4505	4730	4960	5185	5410		
15 MPH	4245	5015	5775	6810	7860	8380	8895	9415	9930	10430	10935	11430	11925		
30 KM/H	1895	2210	2525	2975	3425	3645	3870	4095	4320	4545	4770	4990	5215		
20 MPH	4180	4870	5565	6560	7550	8035	8530	9030	9525	10020	10515	11000	11495		
40 KM/H	1815	2090	2360	2780	3200	3410	3620	3825	4035	4245	4455	4665	4875		
25 MPH	4000	4610	5205	6130	7055	7520	7980	8435	8895	9360	9820	10285	10750		
50 KM/H		2090	2360	2780	3200	3410	3620	3825	4035	4245	4455	4665	4875		
30 MPH		4610	5205	6130	7055	7520	7980	8435	8895	9360	9820	10285	10750		
65 KM/H		1685	2035	2405	2775	2960	3145	3325	3510	3695	3880	4065	4250		
40 MPH		3715	4485	5300	6120	6525	6935	7330	7740	8145	8555	8960	9370		

<b>440/80 R34 159A8/155D IND TL</b>	967528 20271	-	431 17	1580 62	718 28.3	4706 185.3	28 35	- -	295 78	DW14L	DW15L, DW16L
-------------------------------------	-----------------	---	-----------	------------	-------------	---------------	----------	--------	-----------	-------	--------------

<b>Bar</b>	<b>0.80</b>	<b>1.20</b>	<b>1.60</b>	<b>2.00</b>	<b>2.40</b>	<b>2.60</b>	<b>2.80</b>	<b>3.00</b>	<b>3.20</b>	<b>3.40</b>	<b>3.60</b>	<b>3.80</b>	<b>4.00</b>	<b>4.20</b>	<b>4.40</b>
<i>Psi</i>	12	17	23	29	35	38	41	44	46	49	52	55	58	61	64

Machine - use  
kg - lbs **COMPACT WHEEL LOADER / BACKHOE LOADER / TELEHANDLER**

STAT			5925	6930	7935	8470	9000	9535	10065	10640	11215				
			13060	15280	17495	18675	19840	21020	22190	23455	24725				
10 KM/H CYC.			3270	3945	4615	4940	5265	5590	5915	6240	6565				
6 MPH CYC.			7210	8695	10175	10890	11605	12325	13040	13755	14475				
25 KM/H	2105	2420	2730	3195	3655	3905	4150	4395	4640						
15 MPH	4640	5335	6020	7045	8060	8610	9150	9690	10230						
30 KM/H	2070	2375	2680	3135	3590	3830	4070	4310	4550						
20 MPH	4565	5235	5910	6910	7915	8445	8975	9500	10030						
40 KM/H	1985	2280	2575	3015	3450	3685	3915	4145	4375						
25 MPH	4375	5025	5675	6645	7605	8125	8630	9140	9645						
50 KM/H		2280	2575	3015	3450	3680	3910	4145	4375						
30 MPH		5025	5675	6645	7605	8115	8620	9140	9645						
65 KM/H		1845	2255	2650	3045	3255	3460	3670	3875						
40 MPH		4070	4970	5840	6715	7175	7630	8090	8545						

**IMPORTANT:** The inflation pressure is always determined according to the load per tire, speed and work to be carried out.

Stat: static load at 0 mph., vehicle stationary. 6 mph. Cyc: max. speed 6 mph. with cyclic load. 15, 20, 25, 30 and 40 mph.: use on the road up to 15, 20, 25, 30 and 40 mph.

### LEARN MORE

ON THE WEB  
[business.michelin.co.uk](http://business.michelin.co.uk)

TESTIMONIALS  
[youtube.com](http://youtube.com)

UPDATED JANUARY 2023

### CONTACT

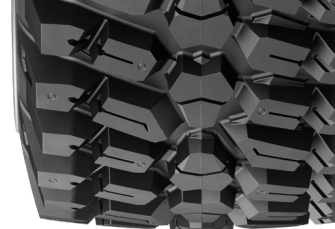
Please contact your local sales representative for more information.



**MICHELIN**



## TECHNICAL CHARACTERISTICS



DESCRIPTION	CAI [MSPN]	Max. dist./ hour km [mile]	e mm [in]	D mm [in]	R' mm [in]	RC mm [in]	Tread depth mm [32rd]	Dual spacing mm [in]	75% Internal volume liter [gal]	Measuring recommended rim	Other approved rims <i>See end of document for more options</i>
<b>480/80 R34 164A8/159D IND TL</b>	333253 56587	-	477 18.8	1648 64.6	743 29.3	4900 192.9	28 35	- -	361 95.5	DW15L	DW16L, DW18L

<b>Bar</b>	<b>0.80</b>	<b>1.20</b>	<b>1.60</b>	<b>2.00</b>	<b>2.40</b>	<b>2.60</b>	<b>2.80</b>	<b>3.00</b>	<b>3.20</b>	<b>3.40</b>	<b>3.60</b>	<b>3.80</b>	<b>4.00</b>	<b>4.20</b>	<b>4.40</b>
<i>Psi</i>	12	17	23	29	35	38	41	44	46	49	52	55	58	61	64

Machine - use  
kg - lbs

### COMPACT WHEEL LOADER / BACKHOE LOADER / TELEHANDLER

STAT			6670	7935	9200	9775	10350	10925	11500	12190	12880				
			14705	17495	20285	21550	22820	24085	25355	26875	28395				
10 KM/H CYC.			3645	4485	5325	5690	6050	6415	6775	7140	7500				
6 MPH CYC.			8035	9890	11740	12545	13340	14145	14935	15740	16535				
25 KM/H	2405	2740	3075	3660	4240	4505	4770	5035	5300						
15 MPH	5300	6040	6780	8070	9350	9930	10515	11100	11685						
30 KM/H	2370	2695	3015	3590	4160	4420	4680	4940	5200						
20 MPH	5225	5940	6645	7915	9170	9745	10320	10890	11465						
40 KM/H	2270	2585	2900	3450	4000	4250	4500	4750	5000						
25 MPH	5005	5700	6395	7605	8820	9370	9920	10470	11025						
50 KM/H		2585	2900	3450	4000	4250	4500	4750	5000						
30 MPH		5700	6395	7605	8820	9370	9920	10470	11025						
65 KM/H		2105	2540	3020	3500	3720	3940	4155	4375						
40 MPH		4640	5600	6660	7715	8200	8685	9160	9645						

<b>480/80 R38 166A8/161D IND TL</b>	846732 06819	-	478 18.8	1757 68.9	791 31.1	5293 208.4	29 37	626 24.6	416 109.9	DW15L	DW16L, DW18L
-------------------------------------	-----------------	---	-------------	--------------	-------------	---------------	----------	-------------	--------------	-------	--------------

<b>Bar</b>	<b>0.80</b>	<b>1.20</b>	<b>1.60</b>	<b>2.00</b>	<b>2.40</b>	<b>2.60</b>	<b>2.80</b>	<b>3.00</b>	<b>3.20</b>	<b>3.40</b>	<b>3.60</b>	<b>3.80</b>	<b>4.00</b>	<b>4.20</b>	<b>4.40</b>
<i>Psi</i>	12	17	23	29	35	38	41	44	46	49	52	55	58	61	64

Machine - use  
kg - lbs

### COMPACT WHEEL LOADER / BACKHOE LOADER / TELEHANDLER

STAT			5925	7275	8625	9220	9815	10410	11000	11595	12190				
			13060	16040	19015	20325	21640	22950	24250	25565	26875				
10 KM/H CYC.			3865	4745	5625	6015	6400	6790	7175	7565	7950				
6 MPH CYC.			8520	10460	12400	13260	14110	14970	15820	16680	17525				
25 KM/H	2535	2900	3260	3885	4505	4785	5065	5340	5620						
15 MPH	5590	6395	7185	8565	9930	10550	11165	11775	12390						
30 KM/H	2495	2850	3200	3810	4420	4695	4965	5240	5510						
20 MPH	5500	6285	7055	8400	9745	10350	10945	11550	12145						
40 KM/H	2390	2735	3075	3630	4190	4465	4745	5020	5300						
25 MPH	5270	6030	6780	8005	9235	9845	10460	11065	11685						
50 KM/H		2735	3075	3630	4190	4465	4745	5020	5300						
30 MPH		6030	6780	8005	9235	9845	10460	11065	11685						
65 KM/H		2220	2690	3175	3660	3900	4140	4385	4625						
40 MPH		4895	5930	7000	8070	8600	9125	9665	10195						

**IMPORTANT:** The inflation pressure is always determined according to the load per tire, speed and work to be carried out.

Stat: static load at 0 mph., vehicle stationary. 6 mph. Cyc: max. speed 6 mph. with cyclic load. 15, 20, 25, 30 and 40 mph.: use on the road up to 15, 20, 25, 30 and 40 mph.

### LEARN MORE

ON THE WEB  
[business.michelin.co.uk](http://business.michelin.co.uk)

TESTIMONIALS  
[youtube.com](http://youtube.com)

UPDATED JANUARY 2023

### CONTACT

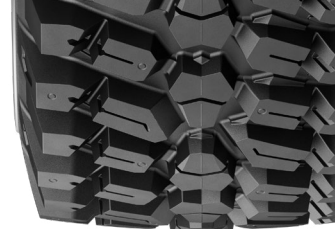
Please contact your local sales representative for more information.



**MICHELIN**

# MICHELIN CROSSGRIP

## TECHNICAL CHARACTERISTICS



DESCRIPTION	CAI [MSPN]	Max. dist./ hour km [mile]	e mm [in]	D mm [in]	R' mm [in]	RC mm [in]	Tread depth mm [32rd]	Dual spacing mm [in]	75% Internal volume liter [gal]	Measuring recommended rim	Other approved rims <small>See end of document for more options</small>				
<b>540/80 R38 172A8/167D IND TL</b>	<b>567367</b> 65312	-	<b>561</b> 22.1	<b>1856</b> 72.8	<b>832</b> 32.8	<b>5511</b> 217	<b>28</b> 35	<b>699</b> 27.5	<b>523</b> 138.3	<b>DW18L</b>	<b>DW16L</b>				
<b>Bar</b>	<b>0.80</b>	<b>1.20</b>	<b>1.60</b>	<b>2.00</b>	<b>2.40</b>	<b>2.60</b>	<b>2.80</b>	<b>3.00</b>	<b>3.20</b>	<b>3.40</b>	<b>3.60</b>	<b>3.80</b>	<b>4.00</b>	<b>4.20</b>	<b>4.40</b>
<i>Psi</i>	12	17	23	29	35	38	41	44	46	49	52	55	58	61	64
Machine - use kg - lbs	<b>COMPACT WHEEL LOADER / BACKHOE LOADER / TELEHANDLER</b>														
STAT		10345	11220	12090	12690	13290	13890	14490	15370	16250					
		22805	24735	26655	27975	29300	30620	31945	33885	35825					
<b>10 KM/H CYC.</b>		<b>6765</b>	<b>7340</b>	<b>7910</b>	<b>8290</b>	<b>8670</b>	<b>9050</b>	<b>9430</b>	<b>10030</b>	<b>10630</b>					
<i>6 MPH CYC.</i>		14915	16180	17440	18275	19115	19950	20790	22110	23435					
<b>25 KM/H</b>	<b>3035</b>	<b>3905</b>	<b>4770</b>	<b>5175</b>	<b>5575</b>	<b>5845</b>	<b>6115</b>	<b>6380</b>	<b>6650</b>						
<i>15 MPH</i>	6690	8610	10515	11410	12290	12885	13480	14065	14660						
<b>30 KM/H</b>	<b>2985</b>	<b>3840</b>	<b>4695</b>	<b>5090</b>	<b>5485</b>	<b>5750</b>	<b>6015</b>	<b>6275</b>	<b>6540</b>						
<i>20 MPH</i>	6580	8465	10350	11220	12090	12675	13260	13835	14420						
<b>40 KM/H</b>	<b>2860</b>	<b>3680</b>	<b>4500</b>	<b>4950</b>	<b>5400</b>	<b>5625</b>	<b>5850</b>	<b>6075</b>	<b>6300</b>						
<i>25 MPH</i>	6305	8115	9920	10915	11905	12400	12895	13395	13890						
<b>50 KM/H</b>	<b>3455</b>	<b>4225</b>	<b>4640</b>	<b>5055</b>	<b>5265</b>	<b>5470</b>	<b>5680</b>	<b>5885</b>							
<i>30 MPH</i>	7615	9315	10230	11145	11605	12060	12520	12975							
<b>65 KM/H</b>	<b>3200</b>	<b>3910</b>	<b>4295</b>	<b>4680</b>	<b>4875</b>	<b>5065</b>	<b>5260</b>	<b>5450</b>							
<i>40 MPH</i>	7055	8620	9470	10320	10750	11165	11595	12015							

**IMPORTANT:** The inflation pressure is always determined according to the load per tire, speed and work to be carried out.

Stat: static load at 0 mph., vehicle stationary. 6 mph. Cyc: max. speed 6 mph. with cyclic load. 15, 20, 25, 30 and 40 mph.: use on the road up to 15, 20, 25, 30 and 40 mph.

### LEARN MORE

ON THE WEB  
[business.michelin.co.uk](https://business.michelin.co.uk)

TESTIMONIALS  
[youtube.com](https://youtube.com)

UPDATED JANUARY 2023

### CONTACT

Please contact your local sales representative for more information.



**MICHELIN**