



# MICHELIN® BIBLOAD HARD SURFACE

**BETTER DURABILITY AND RIDE QUALITY**



340/80 R18 143A8/143B IND TL
400/70 R18 147A8/147B IND TL
340/80 R20 144A8/144B IND TL
400/70 R20 149A8/149B IND TL
460/70 R24 159A8/159B IND TL

440/80 R24 161A8/161B IND TL
500/70 R24 164A8/164B IND TL
540/70 R24 168A8/168B IND TL
480/80 R26 167A8/167B IND TL
440/80 R28 163A8/163B IND TL



BACKHOE  
LOADERS



COMPACT WHEEL  
LOADERS



TELEHANDLERS



**MICHELIN**



# MICHELIN® BIBLOAD HARD SURFACE

## BETTER DURABILITY AND RIDE QUALITY



BACKHOE LOADERS



COMPACT WHEEL LOADERS

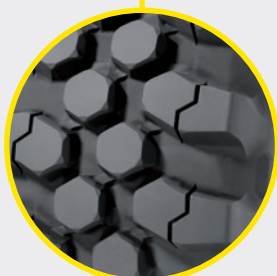


TELEHANDLERS

Multidirectional tread blocks  
and increased tread depth



Reinforced  
sidewall



Innovative  
diamond tread  
pattern



### ■ **RADIAL TIRE**

For better service life



### ■ **TRACTION**

**+30%**  
footprint vs. XMCL



### ■ **PRODUCTIVITY**

Metal summit plies  
for puncture resistance



### ■ **COMFORT**

Excellent stability on slopes  
& better quality comfort  
than XMCL



**MICHELIN**



## MICHELIN TECHNICAL DATA

COMMERCIAL DESCRIPTION	CAI	S mm	OD mm	LR mm	RC mm	Tube code	Tread depth mm	75% internal volume liter	Measuring Recommended Rim (1)	Other Approved Rims (1)					
<b>BIBLOAD HARD SURFACE</b> 340/80 R18 143A8/143B IND TL 12.5 R18 (Equiv 12PR)	415829	342	990	448	2946	828	28	107	11	11SDC 12; 12SDC W10; W11					
<b>Bar</b>	1.60	1.80	2.00	2.20	2.40	2.60	2.80	3.00	3.20	3.40	3.60	3.80	4.00	4.20	4.40
STAT	2450	2725	2995	3270	3540	3815	4090	4360	4635	4905	5180	5455	5725	6000	6270
10 KM/H CYC	1600	1780	1955	2135	2310	2490	2670	2845	3025	3200	3380	3555	3735	3915	4090
25 KM/H	1450	1580	1715	1845	1975	2105	2240	2370	2500	2630	2760	2890	3020		
30 KM/H	1390	1520	1645	1775	1900	2030	2155	2285	2410	2540	2665	2795	2920		
40/50 KM/H	1320	1435	1550	1665	1780	1895	2010	2125	2240	2360	2485	2605	2725		
<b>BIBLOAD HARD SURFACE</b> 400/70 R18 147A8/147B IND TL (405/70 R18 - 16.0/70R18 Equiv 14PR)	239365	397	1006	448	2983		29	129	13	12; 12SDC 13.00					
<b>Bar</b>	1.60	1.80	2.00	2.20	2.40	2.60	2.80	3.00	3.20	3.40	3.60	3.80	4.00	4.20	4.40
STAT	2800	3100	3400	3700	4000	4300	4600	4930	5265	5595	5925	6215	6500	6790	7075
10 KM/H CYC	1825	2020	2215	2415	2610	2805	3000	3215	3435	3650	3865	4050	4240	4430	4615
25 KM/H	1670	1810	1945	2085	2220	2380	2540	2700	2860	3000	3140	3275	3415		
30 KM/H	1605	1740	1875	2005	2140	2295	2450	2600	2755	2890	3025	3155	3290		
40/50 KM/H	1500	1625	1750	1875	2000	2145	2290	2430	2575	2700	2825	2950	3075		
<b>BIBLOAD HARD SURFACE</b> 340/80 R20 144A8/144B IND TL 12.5 R20 (Equiv 12PR)	991253	346	1041	473	3100	664	28	114	11	11SDC 12; 12SDC W10; W11					
<b>Bar</b>	1.60	1.80	2.00	2.20	2.40	2.60	2.80	3.00	3.20	3.40	3.60	3.80	4.00	4.20	4.40
STAT	2520	2800	3080	3360	3640	3920	4200	4480	4760	5040	5320	5600	5880	6160	6440
10 KM/H CYC	1640	1825	2005	2190	2370	2555	2740	2920	3105	3285	3470	3650	3835	4020	4200
25 KM/H	1490	1625	1760	1895	2030	2165	2300	2435	2570	2705	2840	2975	3110		
30 KM/H	1430	1560	1690	1820	1950	2080	2210	2340	2470	2605	2735	2870	3000		
40/50 KM/H	1360	1480	1595	1715	1830	1950	2065	2185	2300	2425	2550	2675	2800		
<b>BIBLOAD HARD SURFACE</b> 400/70 R20 149A8/149B IND TL 16.0/70 R20 (Equiv 16PR)	793611	403	1068	480	3174	664	29	140	13	12; 12SDC 13SDC; 14					
<b>Bar</b>	1.60	1.80	2.00	2.20	2.40	2.60	2.80	3.00	3.20	3.40	3.60	3.80	4.00	4.20	4.40
STAT	2930	3255	3580	3905	4230	4555	4880	5205	5530	5855	6180	6505	6830	7155	7480
10 KM/H CYC	1910	2120	2335	2545	2760	2970	3180	3395	3605	3820	4030	4245	4455	4670	4880
25 KM/H	1730	1885	2045	2200	2355	2510	2670	2825	2980	3140	3295	3455	3610		
30 KM/H	1660	1810	1965	2115	2265	2415	2570	2720	2870	3025	3175	3330	3480		
40/50 KM/H	1550	1690	1825	1965	2100	2240	2375	2515	2650	2800	2950	3100	3250		
<b>BIBLOAD HARD SURFACE</b> 460/70 R24 159A8/159B IND TL 17.5 LR24 (Equiv 18PR)	372690	467	1241	558	3688	710	33	218		DW15L	14; 16; DW14L DW16L				
<b>Bar</b>	1.60	1.80	2.00	2.20	2.40	2.60	2.80	3.00	3.20	3.40	3.60	3.80	4.00	4.20	4.40
STAT	3940	4375	4815	5250	5690	6125	6560	7000	7435	7875	8310	8750	9185	9625	10060
10 KM/H CYC	2570	2855	3140	3425	3710	3995	4280	4565	4850	5135	5420	5705	5990	6275	6560
25 KM/H	2320	2530	2745	2955	3165	3375	3585	3800	4010	4225	4435	4650	4860		
30 KM/H	2240	2445	2650	2850	3055	3260	3460	3665	3870	4075	4275	4480	4680		
40/50 KM/H	2120	2310	2505	2695	2885	3075	3270	3460	3650	3830	4015	4195	4375		
<b>BIBLOAD HARD SURFACE</b> 440/80 R24 161A8/161B IND TL 16.9 R24 (Equiv 18PR)	814805	448	1299	584	3860	710	32	234		DW14L	14 DW15L				
<b>Bar</b>	1.60	1.80	2.00	2.20	2.40	2.60	2.80	3.00	3.20	3.40	3.60	3.80	4.00	4.20	4.40
STAT	4255	4720	5185	5650	6115	6585	7050	7515	7980	8445	8910	9345	9775	10210	10640
10 KM/H CYC	2775	3080	3380	3685	3990	4295	4595	4900	5205	5505	5810	6095	6375	6660	6940
25 KM/H	2500	2720	2935	3155	3370	3590	3805	4025	4240	4475	4705	4940	5170		
30 KM/H	2390	2630	2865	3105	3340	3580	3815	4055	4290	4485	4680	4875	5070		
40/50 KM/H	2180	2375	2575	2770	2965	3160	3355	3555	3750	3970	4190	4405	4625		

# MICHELIN®

## BIBLOAD HARD SURFACE

### MICHELIN TECHNICAL DATA

COMMERCIAL DESCRIPTION	CAI	S mm	OD mm	LR mm	RC mm	Tube code	Tread depth mm	75% internal volume liter	Measuring Recommended Rim (1)	Other Approved Rims (1)					
<b>BIBLOAD HARD SURFACE</b> 500/70 R24 164A8/164B IND TL 19.5 LR24 (Equiv 20PR)	<b>346709</b>	<b>499</b>	<b>1299</b>	<b>594</b>	<b>3874</b>	<b>710</b>	<b>32</b>	<b>266</b>	DW16L	16 DW15L					
<b>Bar</b>	<b>1.60</b>	<b>1.80</b>	<b>2.00</b>	<b>2.20</b>	<b>2.40</b>	<b>2.60</b>	<b>2.80</b>	<b>3.00</b>	<b>3.20</b>	<b>3.40</b>	<b>3.60</b>	<b>3.80</b>	<b>4.00</b>	<b>4.20</b>	<b>4.40</b>
STAT	4500	5000	5500	6000	6500	7000	7500	8000	8500	9000	9500	10000	10500	11000	11500
10 KM/H CYC	2930	3255	3585	3910	4240	4565	4890	5220	5545	5875	6200	6525	6850	7175	7500
25 KM/H	2650	2890	3135	3375	3615	3855	4100	4340	4580	4825	5065	5310	5550		
30 KM/H	2560	2795	3025	3260	3490	3725	3955	4190	4420	4655	4885	5120	5350		
40/50 KM/H	2360	2580	2800	3020	3245	3465	3685	3905	4125	4345	4565	4780	5000		

COMMERCIAL DESCRIPTION	CAI	S mm	OD mm	LR mm	RC mm	Tube code	Tread depth mm	75% internal volume liter	Measuring Recommended Rim (1)	Other Approved Rims (1)					
<b>BIBLOAD HARD SURFACE</b> 540/70 R24 168A8/168B IND TL 21 LR24 (Equiv 20PR)	<b>005412</b>	<b>567</b>	<b>1341</b>	<b>600</b>	<b>3981</b>	<b>710</b>	<b>33</b>	<b>317</b>	DW18L	DW16L					
<b>Bar</b>	<b>1.60</b>	<b>1.80</b>	<b>2.00</b>	<b>2.20</b>	<b>2.40</b>	<b>2.60</b>	<b>2.80</b>	<b>3.00</b>	<b>3.20</b>	<b>3.40</b>	<b>3.60</b>	<b>3.80</b>	<b>4.00</b>	<b>4.20</b>	<b>4.40</b>
STAT	5015	5465	5910	6360	6805	7255	7700	8150	8595	9045	9490	10335	11185	12035	12880
10 KM/H CYC	3270	3560	3855	4145	4440	4730	5020	5315	5605	5900	6190	6740	7295	7850	8400
25 KM/H	2940	3215	3490	3765	4040	4310	4585	4860	5135	5405	5680	5950	6220		
30 KM/H	2840	3105	3370	3630	3895	4160	4425	4685	4950	5215	5475	5740	6000		
40/50 KM/H	2650	2895	3145	3390	3640	3885	4130	4380	4625	4870	5115	5355	5600		

COMMERCIAL DESCRIPTION	CAI	S mm	OD mm	LR mm	RC mm	Tube code	Tread depth mm	75% internal volume liter	Measuring Recommended Rim (1)	Other Approved Rims (1)					
<b>BIBLOAD HARD SURFACE</b> 480/80 R26 167A8/167B IND TL 18.4 R26 (Equiv 20PR)	<b>886709</b>	<b>509</b>	<b>1419</b>	<b>637</b>	<b>4215</b>	<b>716</b>	<b>33</b>	<b>304</b>	DW15L	DW16L					
<b>Bar</b>	<b>1.60</b>	<b>1.80</b>	<b>2.00</b>	<b>2.20</b>	<b>2.40</b>	<b>2.60</b>	<b>2.80</b>	<b>3.00</b>	<b>3.20</b>	<b>3.40</b>	<b>3.60</b>	<b>3.80</b>	<b>4.00</b>	<b>4.20</b>	<b>4.40</b>
STAT	4900	5445	5990	6535	7080	7625	8170	8715	9260	9805	10350	10895	11445	11990	12535
10 KM/H CYC	3200	3555	3910	4265	4620	4975	5330	5685	6040	6395	6750	7460	8175		
25 KM/H	2890	3155	3420	3680	3945	4210	4475	4735	5000	5265	5525	5790	6050		
30 KM/H	2790	3045	3300	3550	3805	4060	4315	4565	4820	5075	5330	5580	5835		
40/50 KM/H	2575	2815	3055	3295	3540	3780	4020	4260	4500	4740	4975	5215	5450		

COMMERCIAL DESCRIPTION	CAI	S mm	OD mm	LR mm	RC mm	Tube code	Tread depth mm	75% internal volume liter	Measuring Recommended Rim (1)	Other Approved Rims (1)					
<b>BIBLOAD HARD SURFACE</b> 440/80 R28 163A8/163B IND TL 16.9 R28 (Equiv 18PR)	<b>195802</b>	<b>446</b>	<b>1407</b>	<b>637</b>	<b>4188</b>	<b>822</b>	<b>33</b>	<b>259</b>	DW14L	DW15L					
<b>Bar</b>	<b>1.60</b>	<b>1.80</b>	<b>2.00</b>	<b>2.20</b>	<b>2.40</b>	<b>2.60</b>	<b>2.80</b>	<b>3.00</b>	<b>3.20</b>	<b>3.40</b>	<b>3.60</b>	<b>3.80</b>	<b>4.00</b>	<b>4.20</b>	<b>4.40</b>
STAT	4370	4930	5485	6045	6605	7165	7720	8280	8840	9395	9955	10515	11075	11630	12190
10 KM/H CYC	2850	3275	3700	4125	4550	4975	5400	5825	6250	6675	7100	7525	7950		
25 KM/H	2620	2855	3085	3320	3550	3785	4015	4250	4480	4715	4945	5180	5410		
30 KM/H	2525	2750	2975	3200	3420	3645	3870	4095	4320	4545	4765	4990	5215		
40/50 KM/H	2360	2570	2780	2990	3200	3410	3620	3825	4035	4245	4455	4665	4875		

(1) More informations in the Michelin Databook 2019.



AUTHORIZED DISTRIBUTOR: