



LINE HAUL APPLICATIONS

THE MICHELIN X[®] LINE ENERGY™ D+ TIRE

Michelin's most fuel efficient ⁽¹⁾ dual Drive tire, the X[®] LINE ENERGY™ D+ features a casing designed to reach up to 1 million miles with up to 4 retreads.

Line Haul	Regional	Urban	On/Off Road
<input checked="" type="checkbox"/>	<input type="checkbox"/>	<input type="checkbox"/>	<input type="checkbox"/>

Recommended Acceptable



22% lower in rolling resistance vs. the X Line Energy D tire ⁽¹⁾



Provides more than 10% better wet stopping traction than leading competitors ⁽²⁾

(1) Calculated based on internal ISO28580 rolling resistance testing; 275/80R22.5 LRG X[®] Line Energy™ D+ vs. 275/80R22.5 LRG X[®] Line Energy™ D.

(2) Based on internal wet braking test at 60 mph (97 kph) on asphalt measuring peak Mu, using the Michelin X[®] Line Energy™ D+ tire, Bridgestone M713 Ecopia tire, Goodyear Fuel Max[®] LHD[®] 2, and Continental[®] HDLZ+ tire. All tires were size 295/75R22.5. Actual on-road results may vary.

(3) Based on internal tests against SmartWay[®] requirements. For more information on SmartWay[®] verified technologies, go to US: www.epa.gov/smartway or CA: [https://www.nrcan.gc.ca](http://www.nrcan.gc.ca).

(4) 3PMSF (3 Peak Mountain Snow Flake) is from European R117 regulation. It has no regulatory Truck Tire reference in N.A. The tire must score at least 25% better in deep snow traction than the Standard Reference Test Tire on an ECE certified ISO test procedure. 3PMSF always appears with "M+S" mark.

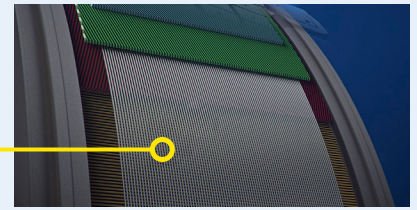


THE MICHELIN X[®] LINE ENERGY™ D+ TIRE

Infini-Coil[®] Technology

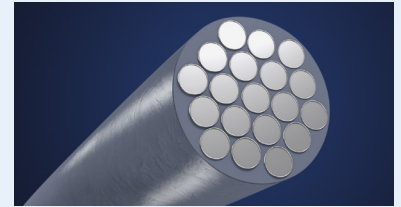
1/8 mile steel cable wound circumferentially around the belt package to provide casing protection, consistent footprint and long, even wear.

Infini-Coil Technology



PowerCoil Technology

High tensile strength steel belt package with rubber infused cables.
– Designed to provide a durable casing for the long haul with repeated retreading and resistant to damages.

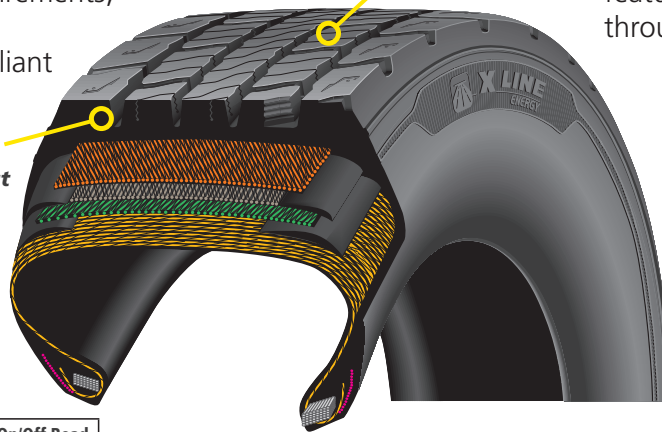


FUEL SAVINGS

- Ultra-low rolling resistance⁽²⁾
- Meets SmartWay[®]⁽³⁾ requirements, CARB compliant
- Greenhouse Gas 2 Compliant

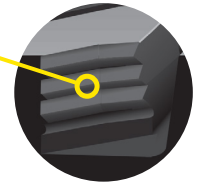
Advanced Technology tread compound designed for fuel efficiency⁽¹⁾

Regenerating features provide grip throughout tread life



LONG-LASTING TRACTION

- Interlocking siping and regenerating features provide biting edges throughout tread life



RETREADABILITY

- Durable casing with high tensile strength steel belts supports repeated retreading

Line Haul	Regional	Urban	On/Off Road
<input checked="" type="checkbox"/> Recommended	<input type="checkbox"/> Acceptable	<input type="checkbox"/>	<input type="checkbox"/>

Size	Load Range	Catalog Number	Tread Depth			Max. Speed (*)		Loaded Radius		Overall Diameter		Overall Width (‡)		Approved Wheels (Measuring wheel listed first.)	Min. Dual Spacing (‡)		Revs Per Mile	Max. Load and Pressure Single				Max. Load and Pressure Dual			
			32nds	mph	kph	in.	mm	in.	mm	in.	mm	in.	mm		in.	mm		lbs.	psi	kg.	kPa	lbs.	psi	kg.	kPa
11R22.5	G	51317	20	75	120	19.4	494	41.5	1054	11.4	289	8.25, 7.50	11.8	300	498	6175	105	2800	720	5840	105	2650	720		
295/75R22.5	G	54926	20	75	120	18.8	478	40.3	1023	11.1	283	8.25, 9.00	12.2	311	514	6175	110	2800	760	5675	110	2575	760		

Note: Wheel listed first is the measuring wheel.

(*) Exceeding the lawful speed limit is neither recommended nor endorsed.

(‡) Overall width will change 0.1 inch (2.5 mm) for each 1/4 inch change in wheel width. Minimum dual spacing should be adjusted accordingly.

(1) Based on industry standard rolling resistance testing of comparable tires or retreads. Actual results may vary, and may be impacted by many factors, to include road conditions, weather and environment, driver performance, etc.

(2) Based on internal ISO 28580 rolling resistance testing using size 275/80R22.5 LRG.

(3) Based on internal tests against SmartWay[®] requirements. For more information on SmartWay[®] verified technologies, go to US: www.epa.gov/smartway or CA: <https://www.nrcan.gc.ca>.

(4) 3PMSF (3 Peak Mountain Snow Flake) is from European R117 regulation. It has no regulatory Truck Tire reference in N.A. The tire must score at least 25% better in deep snow traction than the Standard Reference Test Tire on an ECE certified ISO test procedure. 3PMSF always appears with "M+S" mark.

Michelin tires and tubes are subject to a continuous development program. Michelin North America, Inc. reserves the right to change product specifications at any time without notice or obligations.

MNA, Inc. continually updates its product information to reflect any changes in Industry Standards. Printed material may not reflect the current Load and Inflation information.

Please visit business.michelinman.com for the latest product information. The actual load and inflation pressure used must not exceed the wheel manufacturer's maximum conditions.

Never exceed a wheel manufacturer's limits without permission from the component manufacturer.

275/80R22.5 X Line Energy D+ was replaced by the 295/75R22.5 in 2024 -tire sizes considered equivalent.

Size	Load Range	Catalog Number	Tread Depth			Max. Speed (*)		Loaded Radius		Overall Diameter		Overall Width (‡)		Approved Wheels (Measuring wheel listed first.)	Min. Dual Spacing (‡)		Revs Per Mile	Max. Load and Pressure Single				Max. Load and Pressure Dual			
			32nds	mph	kph	in.	mm	in.	mm	in.	mm	in.	mm		in.	mm		lbs.	psi	kg.	kPa	lbs.	psi	kg.	kPa
275/80R22.5	G	10873	20	75	120	18.8	478	40.3	1023	11.1	283	8.25, 7.50	12.2	311	514	6175	110	2800	760	5675	110	2575	760		

TO FIND OUT MORE
US: business.michelinman.com
CA: business.michelin.ca

FIND US ON FACEBOOK
[michelintruck](https://www.facebook.com/michelintruck)

VISIT US ON THE WEB
US: business.michelinman.com/contact-us
CA: business.michelin.ca/contact-us

CONTACT US BY TELEPHONE
US: 1-888-622-2306
CA: 1-888-622-2306

Michelin North America Inc., One Parkway South, Greenville, SC 29615

Michelin North America (Canada) Inc., 2500 Daniel Johnson Blvd., Suite 500, Laval (QC) H7T 2P6

Copyright © 2024 MNA(CI). All rights reserved.

Copyright © 2024 Michelin North America, Inc. All rights reserved. An Equal Opportunity Employer PDF Only (07/24)