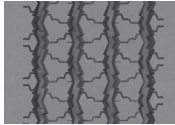
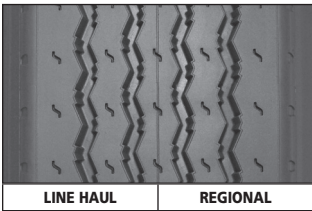


ALL-POSITION RETREADS



Available in the 240 mm – 20/43" width only.

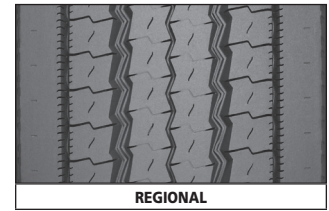
XZA Pre-Mold Retread

All-wheel position tread design with proven versatility and exceptional resistance to scrub and abrasion for line haul and regional applications.
Available siped.



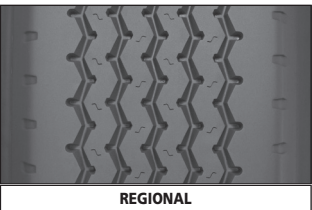
XZE Pre-Mold Retread

All-position retread designed for regional and line haul applications requiring exceptional traction and tire wear resistance.
Available siped.



XZE2+ Pre-Mold Retread

All-position retread designed for regional applications requiring exceptional tire wear resistance.



XZA Wide Base Pre-Mold Retread

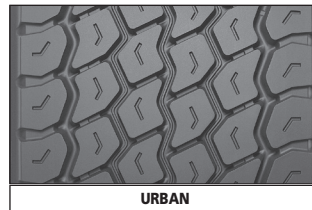
All-wheel position tread design with proven versatility and wide shoulder rib to withstand scrub and abrasion for regional applications.



XZU2 Pre-Mold Retread

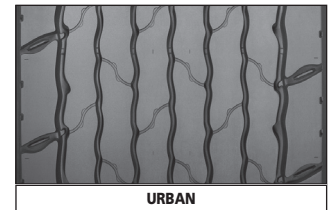
All-position retread optimized for operations involving frequent stopping and starting e.g., transit buses*, delivery vehicles and sanitation trucks.

* Federal Motor Carrier Safety Regulations, 9 C.F.R. § 395.75 (d), specify that "no bus shall be operated with regrooved, recapped or retreaded tires on the front wheels."



X ONE XZUS Pre-Mold Retread

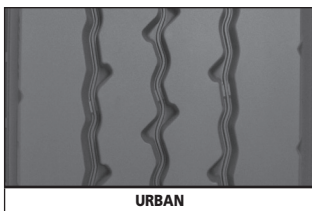
Multi-purpose, all-axle, next generation wide-based single, designed with traction and durability features for demanding urban applications.



X ONE XZUS+ Pre-Mold Retread

Industry-leading, all-position, next generation wide-based single, designed with 50% greater wear life* and durability for demanding urban applications.**

* Vs. Michelin X ONE XZUS Pre-Mold Retread.
** Used in intermittent highway service with maximum speed of 65 mph.



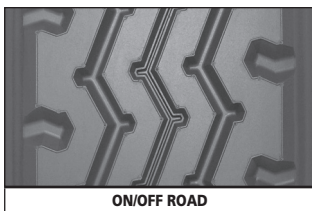
XZUS Pre-Mold Retread

All-position retread helps provide longer, more even wear in demanding regional/urban operations.



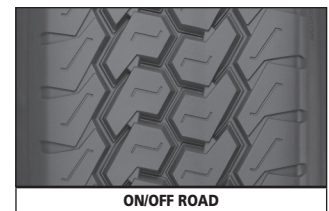
XZL Wide Base Pre-Mold Retread

All-position tire designed to deliver long life for challenging on/off road applications.



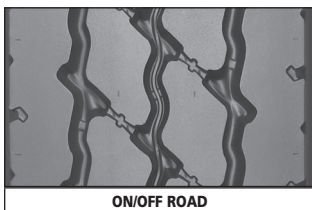
XZY Pre-Mold Retread

All-position retread designed for regional and on/off road applications requiring exceptional tire wear resistance.



XZY Wide Base Pre-Mold Retread

All-position retread designed to deliver long tire life for challenging on/off road applications.



XZY3 Pre-Mold Retread

All-wheel position tread designed for exceptional wear and all-position traction in mixed on/off road service. Abrasion resistance compound promotes long casing and tread life.



XZY3 Wide Base Pre-Mold Retread

All-wheel position tread designed for exceptional wear and all-position traction in mixed on/off road service. Abrasion resistance compound promotes long casing and tread life.

ALL-POSITION RETREADS

| Tread Size | 140 | 150 | 160 | 170 | 180 | 190 | 200 | 210 | 220 | 230 | 240 | 250 | 260 | 270 | 280 | |
|--------------------|------------------|-----|-----|--------------|----------------|----------------|----------------|----------------|----------------|----------|----------------|--------------|---------|----------------|-----|--|
| Size \ # DIE | | | | 168\#5 | 177\#6 | 194\#7 | 203\#8 | 211\#8.5N | 219\#9 | 225\#9.5 | 232\#10 | 238\#10.5 | 252\#12 | | | |
| XZA ⁽¹⁾ | 13/32" - 10.5 mm | | | | | 15/32" - 12 mm | | | | | | 20/32" 16 mm | | | | |
| XZE ⁽¹⁾ | | | | 16/32" 13 mm | 18/32" - 14 mm | | | | | | 18/32" - 14 mm | | | | | |
| XZE2+ | | | | | | | | | | | 20/32" - 16 mm | | | | | |
| XZU2 | | | | | | | | | | | 24/32" - 20 mm | | | | | |
| XZUS | | | | | | | | | 26/32" - 21 mm | | | | | 26/32" - 21 mm | | |
| XZY | | | | | | | 18/32" - 14 mm | | | | 20/32" 16 mm | | | | | |
| XZY 3 | | | | | | | | 24/32" - 19 mm | | | | | | 24/32" 19 mm | | |

WIDE BASE AND X ONE ALL-POSITION SIZES

| Tread Size | 290/345 ⁽²⁾ | 320/365 ⁽²⁾ | 350/395 ⁽²⁾ | 385/435 ⁽²⁾ |
|----------------------------|------------------------|------------------------|------------------------|------------------------|
| XZA Wide Base | 19/32" - 15 mm | | | |
| XZL Wide Base | | | 30/32" 24 mm | |
| XZY Wide Base | | 20/32" 16 mm | | |
| XZY3 Wide Base | 22/32" 17 mm | | | |
| X ONE XZUS | | | | 23/32" 18 mm |
| X ONE XZUS+ ⁽³⁾ | | | | 29/32" 23 mm |

Product Availability (Tread Depth in Shaded Boxes)

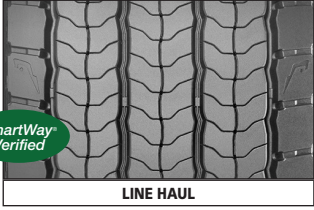
Tread Size Size \ # DIE

For up-to-date product information please visit business.michelinman.com

Retread tread selection should always consider the casing's original service application design and speed limit as published in that tire manufacturer's data book. Applying treads intended for a more severe service / speed application than the original casing design or that would imply a higher speed service than the casing's original speed rating, is generally not recommended.

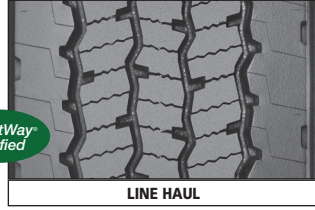
- (1) Available siped. Consult Michelin Retread Technologies dealers for availability.
 (2) Tread widths with two measurements have wings. The first number is tread base width in mm. The second number is the overall width, wing tip to tip.
 (3) Used in intermittent highway service with maximum speed of 65 mph.

DRIVE RETREADS



X ONE LINE ENERGY D2 Pre-Mold Retread

Our lowest rolling resistance heavy truck drive retread to date, for truckload, long haul transportation. Designed for industry-leading fuel savings to lower total cost of ownership while providing exceptional traction for driver confidence.



X® LINE ENERGY D Pre-Mold Retread

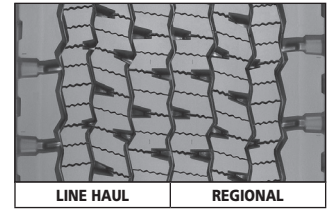
Drive position retread designed to offer exceptional SmartWay® fuel economy⁽¹⁾ with leading tread life and traction in a line haul application.



XDA2 23 AT Pre-Mold Retread

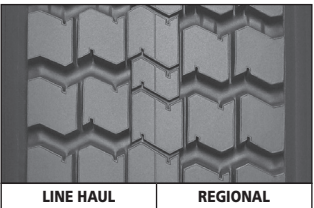
Drive position retread designed for fuel savings, durability, and all-weather traction for line haul applications.

AT designated Advanced Technology Compounds for fuel savings.



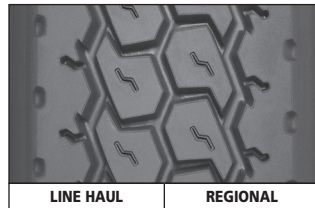
X ONE LINE GRIP D Pre-Mold Retread

Long-wearing Michelin X One drive retread with outstanding traction for line haul and regional applications.



XDC 22 Pre-Mold Retread

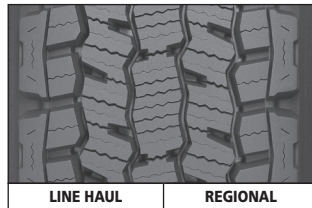
Drive position retread with well-balanced properties designed for excellent wear and traction in line haul and regional applications.



XDHT Pre-Mold Retread

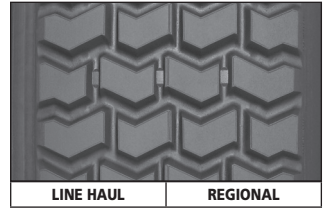
Drive position retread designed for line haul and regional applications.

Available siped.



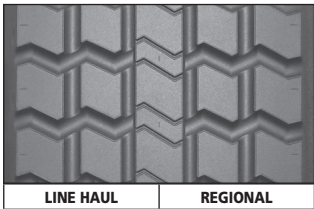
XDN2 Pre-Mold Retread

All-weather drive retread optimized for exceptional traction and mileage.



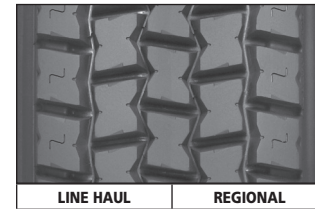
XM+S4 Pre-Mold Retread

Drive position retread with well-balanced properties designed for enhanced traction, especially in snow and mud conditions, for line haul and regional applications.



CD-LL Pre-Mold Retread

Drive position retread with well-balanced properties designed for trade-in vehicles in regional and line haul applications.



XD4 Pre-Mold Retread

Drive position retread designed for high torque conditions, e.g. 4x2's, in line haul and regional applications.



MD XDN2 Pre-Mold Retread

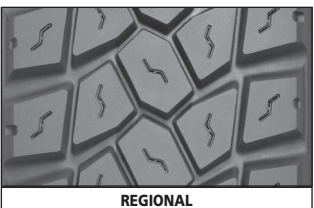
Drive position retread optimized for traction and mileage for urban and regional light and medium duty vehicles with 16" to 19.5" tires.*

* Speed limit of 87 mph for the 190-200 mm size.



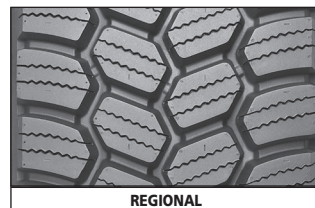
X® MULTI ENERGY D Pre-Mold Retread

High mileage, fuel efficient⁽¹⁾ SmartWay® verified drive retread, optimized for regional and super regional applications.



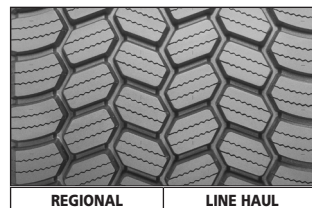
XDE M/S Pre-Mold Retread

Drive position retread with well-balanced properties designed for enhanced traction, especially in muddy conditions, for regional applications.



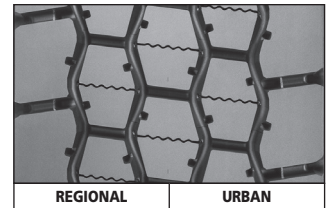
XDS2+ Pre-Mold Retread

Delivers improved year-round drive axle traction, optimized for severe winter conditions.



X ONE XDS2 Pre-Mold Retread

Drive axle retread designed for extreme winter conditions to promote driver confidence and security while capitalizing on the enhanced fuel and weight savings of a next generation wide based tire.



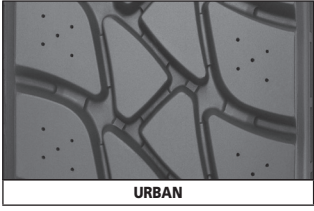
X® MULTI D Pre-Mold Retread

Regional drive retread designed for all-season traction without compromising high mileage to provide optimal total cost of ownership and driver satisfaction.

(1) Based on industry standard rolling resistance testing of comparable tires and retreads. Actual results may vary, and may be impacted by many factors, to include road conditions, weather and environment, driver performance, etc.



DRIVE RETREADS

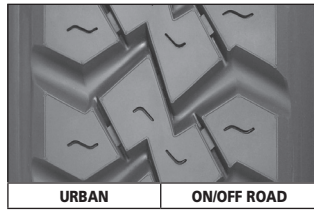


URBAN

XDS

Pre-Mold Retread

Drive position retread designed with optimal scrub resistance for challenging urban applications.



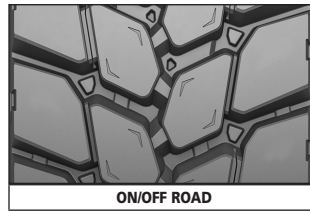
URBAN

ON/OFF ROAD

XDY

Pre-Mold Retread

Drive position retread designed for on/off road, urban, and regional applications that demand rugged wear resistance.

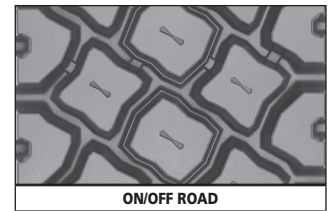


ON/OFF ROAD

X® WORKS D

Pre-Mold Retread

On/off Road drive position retread optimized for exceptional traction, toughness and wear performance in mixed and aggressive applications.



ON/OFF ROAD

XDY-EX

Pre-Mold Retread

Delivers exceptional durability and traction in demanding off-road applications.



DRIVE RETREADS

| Tread Size | 170 | 180 | 190 | 200 | 210 | 220 | 230 | 240 | 250 | 260 | 270 | |
|---------------------------|--------|-----------------|--------|-----------------|-----------|------------------|----------|---------|-----------------|-----------------|-----------------|-----------------|
| Size \ # DIE | 168\#5 | 177\#6 | 194\#7 | 203\#8 | 211\#8.5N | 219\#9 | 225\#9.5 | 232\#10 | 238\#10.5 | 252\#12 | | |
| CD LL | | | | | | 14/32" - 11 mm | | | | | | |
| MD XDN 2 | | | | 18/32" 14 mm | | 20/32" - 16 mm | | | | | | |
| X® LINE ENERGY™ D | | | | | | 21/32" - 16.5 mm | | | | | | |
| X® MULTI ENERGY™ D | | | | | | 21/32" - 17 mm | | | | | | |
| X® MULTI D | | | | | | 28/32" - 22 mm | | | | | | |
| X® WORKS D | | | | | | 30/32" - 24 mm | | | | | 30/32" 24 mm | |
| XD4 | | | | | | 28/32" - 22 mm | | | | | | |
| XDA2 23 AT ⁽¹⁾ | | | | | | 23/32" - 18 mm | | | | | | |
| XDC 22 | | | | | | 22/32" - 17 mm | | | | | | |
| XDE M/S | | 18/32" 14 mm | | 20/32" - 16 mm | | 22/32" - 17 mm | | | | | | |
| XDHT ⁽²⁾ | | 19/32" 15 mm | | | | 23/32" - 18 mm | | | 23/32" 18 mm | | | |
| XDN 2 | | | | | | 27/32" - 21.5 mm | | | | | | |
| XDS 2+ | | | | | | 25/32" - 20 mm | | | | | | 25/32" 20 mm |
| XDU S | | | | | | 32/32" - 25 mm | | | | | | 32/32" 25 mm |
| XDY | | | | | | 26/32" - 21 mm | | | | 32/32" 25 mm | | |
| XDY-EX | | | | | | 32/32" - 25 mm | | | | | | |
| XM+S4 | | | | | | 21/32" - 16.5 mm | | | | | | |

X ONE DRIVE SIZES

| Tread Size | 375/425 ⁽³⁾ | 385/435 ⁽³⁾ |
|----------------------|------------------------|------------------------|
| X ONE LINE ENERGY D2 | 21/32" 16.5 mm | |
| X ONE LINE GRIP D | 27/32" - 21 mm | |
| X ONE XDS 2 | 20/32" - 16 mm | |

Product Availability (Tread Depth in Shaded Boxes)

Tread Size Size \ # DIE

For up-to-date product information please visit business.michelinman.com

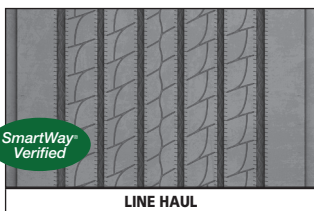
Retread tread selection should always consider the casing's original service application design and speed limit as published in that tire manufacturer's data book. Applying treads intended for a more severe service / speed application than the original casing design or that would imply a higher speed service than the casing's original speed rating, is generally not recommended.

(1) AT designated Advanced Technology Compounds for fuel savings.

(2) Available siped. Consult Michelin Retread Technologies dealers for availability.

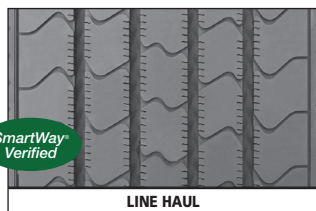
(3) Tread widths with two measurements have wings. The first number is tread base width in mm. The second number is the overall width, wing tip to tip.

TRAILER RETREADS



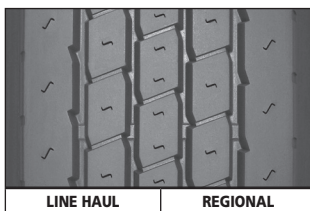
X ONE LINE ENERGY T2
Pre-Mold Retread

Designed for improved tread wear while providing durability and fuel savings⁽¹⁾ to lower your total cost of ownership (TCO).



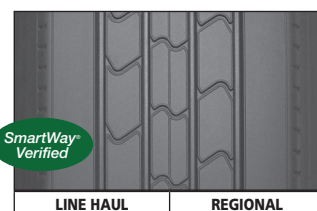
X® LINE ENERGY T
Pre-Mold Retread

A premium trailer position retread for line haul applications, designed to provide fuel efficiency⁽²⁾ and long, even wear.



XTA
Pre-Mold Retread

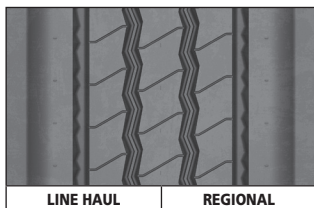
Trailer position retread designed to deliver good, all-purpose performance in line haul and regional applications.



XTA-2
Pre-Mold Retread

SmartWay® verified trailer tread designed to deliver enhanced wear-life in regional and line haul service.

Available siped.



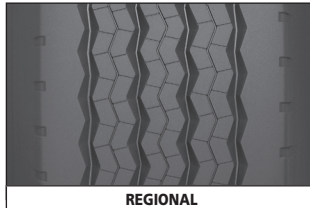
X® MULTI T SA
Pre-Mold Retread

Designed to address the scrub and stresses in spread axle applications while providing superior mileage performance in regional and line haul operations.



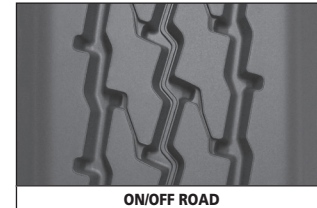
X ONE MULTI ENERGY T
Pre-Mold Retread

A SmartWay® verified trailer position retread which ensures the right balance of outstanding removal mileage, reduced irregular wear and fuel efficiency⁽³⁾ optimized for regional applications.



XTE2 Wide Base
Pre-Mold Retread

Designed to deliver strong durability and handling needed in demanding on/off road applications.



XTY SA
Pre-Mold Retread

Trailer position retread designed to deliver strong wear resistance and traction in demanding on/off road applications, especially for spread-axle and multi-axle rigs.



IT2
Pre-Mold Retread

All position trailer axle retread is designed for use in intermodal applications.

TRAILER RETREADS

| Tread Size | 190 | 200 | 210 | 220 | 230 | 240 | 250 | 260 |
|----------------------------------|----------------|---------------|----------------|---------|----------|--------------|-------------|--------------|
| Size \ # DIE | 194\#7 | 203\#8 | 211\#8.5N | 219\#9 | 225\#9.5 | 232\#10 | 238\#10.5 | 252\#12 |
| Spread Axle Sizes ⁽⁴⁾ | 185/225 | 195/235 | 205/245 | 215/255 | 225/265 | 245/285 | | |
| X® LINE ENERGY™ T | | 11/32" - 9 mm | | | | | | |
| X® MULTI T SA | 16/32" - 13 mm | | | | | | | |
| IT2 | | 11/32" - 9 mm | | | | | | |
| XTA | | | | | | 16/32" 13 mm | | 16/32" 13 mm |
| XTA-2 ⁽⁵⁾ | | 11/32" - 9 mm | | | | | 11/32" 9 mm | |
| XTY SA | | | 22/32" - 17 mm | | | | | |

(1) The U.S. EPA as part of their SmartWay® Program has demonstrated incremental fuel savings when low rolling resistance tires are used just on the tractor and/or just on the trailer. Actual results may vary, and may be impacted by many factors, to include road conditions, weather, environment, combination of steer and drive tires used, driving habits, tire size, equipment, and maintenance.

(2) Based on external rolling resistance tests of the Michelin X® Line Energy T Pre-Mold retread in 230 mm width and current Michelin XT-1 AT Pre-Mold retread in 225 mm width using ISO 28580 test method in tire size YOK RY617 295/75R22.5. Actual on-road fuel saving results may vary, and may be impacted by many factors, to include road conditions, weather, environment, combination of steer and trailer tires used, driving habits, tire size, equipment and maintenance.

(3) Based on industry standard rolling resistance testing of comparable tires and retreads. Actual results may vary, and may be impacted by many factors, to include road conditions, weather and environment, driver performance, etc.

(4) Tread widths with two measurements have wings. The first number is tread base width in mm. The second number is the overall width, wing tip to tip.

(5) Available siped. Consult Michelin Retread Technologies dealers for availability.

WIDE BASE AND X ONE TRAILER SIZES

| Tread Size | 290/345 ⁽⁴⁾ | 375/425 ⁽⁴⁾ | 385/435 ⁽⁴⁾ |
|----------------------|------------------------|------------------------|------------------------|
| XTE2 Wide Base | 20/32" - 16 mm | | |
| X ONE LINE ENERGY T2 | | 13/32" - 10.5 mm | |
| X ONE MULTI ENERGY T | | 15/32" - 12 mm | |

Product Availability (Tread Depth in Shaded Boxes)

Legend: Tread Size Size \ # DIE Spread Axle Sizes

For up-to-date product information please visit business.michelinman.com

Retread tread selection should always consider the casing's original service application design and speed limit as published in that tire manufacturer's data book. Applying treads intended for a more severe service / speed application than the original casing design or that would imply a higher speed service than the casing's original speed rating, is generally not recommended.

MICHELIN RETREAD QUICK REFERENCE TREAD GUIDE

STANDARD SIZES

Tread Size
 Size \ # DIE
 Spread Axle Sizes

| TREAD SIZE | RETREAD | POSITION | MSPN | TREAD DEPTH | | |
|------------|-----------------------------|-----------------------------|---------|-------------|---------|-------|
| | | | | 32nds | mm | |
| 140 | XZA | All-position | 72464 | 13/32" | 10.5 mm | |
| 150 | XZA | All-position | 95829 | 13/32" | 10.5 mm | |
| 160 | XZA | All-position | 43903 | 13/32" | 10.5 mm | |
| 168\#5 | XZE | All-position | 57118 | 18/32" | 14 mm | |
| 170 | XZA | All-position | 48480 | 13/32" | 10.5 mm | |
| | XDE M/S | Drive | 57384 | 18/32" | 14 mm | |
| 177\#6 | XZE | All-position | 62459 | 18/32" | 14 mm | |
| 180 | XZA | All-position | 53906 | 13/32" | 10.5 mm | |
| | XZA Siped | All-position | 74087 | 13/32" | 10.5 mm | |
| | XDHT | Drive | 44572 | 23/32" | 18 mm | |
| | XDE M/S | Drive | 58140 | 18/32" | 14 mm | |
| 185/225 | X Multi T SA ⁽¹⁾ | Trailer | 13086 | 16/32" | 13 mm | |
| 190 | MD XDN2 ⁽²⁾ | Drive | 87625 | 18/32" | 14 mm | |
| | XDE M/S | Drive | 04109 | 20/32" | 16 mm | |
| 194\#7 | XZA | All-position | 71005 | 15/32" | 12 mm | |
| | XZA Siped | All-position | 70659 | 15/32" | 12 mm | |
| | XZE | All-position | 91791 | 18/32" | 14 mm | |
| | XZE Siped | All-position | 90947 | 18/32" | 14 mm | |
| | XDHT | Drive | 94558 | 23/32" | 18 mm | |
| | XTA-2 | Trailer | 74704 | 11/32" | 9 mm | |
| 195/235 | X Multi T SA ⁽¹⁾ | Trailer | 14000 | 16/32" | 13 mm | |
| 200 | MD XDN2 ⁽²⁾ | Drive | 88045 | 18/32" | 14 mm | |
| | XDE M/S | Drive | 94728 | 20/32" | 16 mm | |
| | X Line Energy T | Trailer | 68515 | 11/32" | 9 mm | |
| | X Line Energy T Siped | Trailer | 22028 | 11/32" | 9 mm | |
| 200 / 8 | IT2 | Trailer | 06637 | 11/32" | 9 mm | |
| 203\#8 | XZA | All-position | 92719 | 15/32" | 12 mm | |
| | XZA Siped | All-position | 53937 | 15/32" | 12 mm | |
| | XZE | All-position | 59028 | 18/32" | 14 mm | |
| | XZY | All-position | 54622 | 18/32" | 14 mm | |
| | XDHT | Drive | 54461 | 23/32" | 18 mm | |
| 205/245 | XTA-2 | Trailer | 74861 | 11/32" | 9 mm | |
| | X Multi T SA ⁽¹⁾ | Trailer | 14234 | 16/32" | 13 mm | |
| 210 | XTY SA ⁽¹⁾ | Trailer | 36225 | 22/32" | 17 mm | |
| | XZY3 | All-position | 40131 | 24/32" | 19 mm | |
| | XD4 | Drive | 92270 | 28/32" | 22 mm | |
| | MD XDN2 ⁽²⁾ | Drive | 88381 | 20/32" | 16 mm | |
| | XDE M/S | Drive | 66838 | 22/32" | 17 mm | |
| | XDS2+ | Drive | 15860 | 25/32" | 20 mm | |
| | X Works D | Drive | 12811 | 30/32" | 24 mm | |
| | X Line Energy T | Trailer | 68646 | 11/32" | 9 mm | |
| | X Line Energy T Siped | Trailer | 22707 | 11/32" | 9 mm | |
| | CD-LL | Drive | 74178 | 14/32" | 11 mm | |
| 210 / 8.5N | IT2 | Trailer | 24495 | 11/32" | 9 mm | |
| | XZA | All-position | 74565 | 15/32" | 12 mm | |
| 211\#8.5N | XZA Siped | All-position | 56193 | 15/32" | 12 mm | |
| | XZE | All-position | 86080 | 18/32" | 14 mm | |
| | XZE Siped | All-position | 78892 | 18/32" | 14 mm | |
| | XZY | All-position | 51695 | 18/32" | 14 mm | |
| | XDA2 23 AT | Drive | 77114 | 23/32" | 18 mm | |
| | XDC 22 | Drive | 54426 | 22/32" | 17 mm | |
| | XDHT | Drive | 65683 | 23/32" | 18 mm | |
| | XDHT Siped | Drive | 91143 | 23/32" | 18 mm | |
| | XM+S4 | Drive | 64760 | 21/32" | 16.5 mm | |
| | XTA-2 | Trailer | 74922 | 11/32" | 9 mm | |
| | XTA-2 Siped | Trailer | 75564 | 11/32" | 9 mm | |
| | 215/255 | X Multi T SA ⁽¹⁾ | Trailer | 14882 | 16/32" | 13 mm |
| | | XTY SA ⁽¹⁾ | Trailer | 08911 | 22/32" | 17 mm |

(1) Tread widths with two measurements have wings. The first number is tread base width in mm. The second number is the overall width, wing tip to tip.
 (2) Speed limit of 87 mph for the 190-200 mm size.

| TREAD SIZE | RETREAD | POSITION | MSPN | TREAD DEPTH | |
|------------|-----------------------------|--------------|-------|-------------|---------|
| | | | | 32nds | mm |
| 219\#9 | XZA | All-position | 85773 | 15/32" | 12 mm |
| | XZA Siped | All-position | 61685 | 15/32" | 12 mm |
| | XZE | All-position | 51733 | 18/32" | 14 mm |
| | XZE Siped | All-position | 50397 | 18/32" | 14 mm |
| | XZY | All-position | 61672 | 18/32" | 14 mm |
| | XDA2 23 AT | Drive | 59027 | 23/32" | 18 mm |
| | XDC 22 | Drive | 96544 | 22/32" | 17 mm |
| | XDHT | Drive | 84811 | 23/32" | 18 mm |
| | XDHT Siped | Drive | 73107 | 23/32" | 18 mm |
| | XM+S4 | Drive | 61591 | 21/32" | 16.5 mm |
| 220 | XDY | Drive | 65072 | 26/32" | 21 mm |
| | XTA-2 | Trailer | 74947 | 11/32" | 9 mm |
| | XTA-2 Siped | Trailer | 75658 | 11/32" | 9 mm |
| | XZUS | All-position | 15997 | 26/32" | 21 mm |
| | XZY3 | All-position | 41044 | 24/32" | 19 mm |
| | XZY3 Siped | All-position | 36037 | 24/32" | 19 mm |
| | X Line Energy D | Drive | 26837 | 21/32" | 16.5 mm |
| | XD4 | Drive | 83674 | 28/32" | 22 mm |
| | XDN2 | Drive | 15171 | 27/32" | 21.5 mm |
| | X Multi Energy D | Drive | 53432 | 21/32" | 17 mm |
| 220 / 9 | MD XDN2 | Drive | 88997 | 20/32" | 16 mm |
| | XDE M/S | Drive | 94447 | 22/32" | 17 mm |
| | XDS2+ | Drive | 16888 | 25/32" | 20 mm |
| | X Multi D | Drive | 17923 | 28/32" | 22 mm |
| | XDU | Drive | 28156 | 32/32" | 25 mm |
| | XDY-EX | Drive | 50243 | 32/32" | 25 mm |
| | X Works D | Drive | 05291 | 30/32" | 24 mm |
| | X Line Energy T | Trailer | 69876 | 11/32" | 9 mm |
| | X Line Energy T Siped | Trailer | 22865 | 11/32" | 9 mm |
| | CD-LL | Drive | 61482 | 14/32" | 11 mm |
| 225/265 | IT2 | Trailer | 43280 | 11/32" | 9 mm |
| | X Multi T SA ⁽¹⁾ | Trailer | 16049 | 16/32" | 13 mm |
| 225\#9.5 | XZA | All-position | 94169 | 15/32" | 12 mm |
| | XZA Siped | All-position | 91816 | 15/32" | 12 mm |
| | XZE | All-position | 55240 | 18/32" | 14 mm |
| | XZE Siped | All-position | 70056 | 18/32" | 14 mm |
| | XZY | All-position | 66458 | 18/32" | 14 mm |
| | XDA2 23 AT | Drive | 60625 | 23/32" | 18 mm |
| | XDC 22 | Drive | 84986 | 22/32" | 17 mm |
| | XDHT | Drive | 61815 | 23/32" | 18 mm |
| | XDHT Siped | Drive | 59826 | 23/32" | 18 mm |
| | XM+S4 | Drive | 67565 | 21/32" | 16.5 mm |
| 230 | XDY | Drive | 87485 | 26/32" | 21 mm |
| | XTA-2 | Trailer | 75178 | 11/32" | 9 mm |
| | XTA-2 Siped | Trailer | 76406 | 11/32" | 9 mm |
| | XZUS | All-position | 19842 | 26/32" | 21 mm |
| | XZY3 | All-position | 41385 | 24/32" | 19 mm |
| | X Line Energy D | Drive | 27357 | 21/32" | 16.5 mm |
| | XD4 | Drive | 78304 | 28/32" | 22 mm |
| | XDN2 | Drive | 87596 | 27/32" | 21.5 mm |
| | X Multi Energy D | Drive | 54772 | 21/32" | 17 mm |
| | MD XDN2 ⁽²⁾ | Drive | 89804 | 20/32" | 16 mm |
| 230 / 9.5 | XDE M/S | Drive | 86443 | 22/32" | 17 mm |
| | XDS2+ | Drive | 17019 | 25/32" | 20 mm |
| | X Multi D | Drive | 16430 | 28/32" | 22 mm |
| | XDU | Drive | 15175 | 32/32" | 25 mm |
| | XDY-EX | Drive | 11534 | 32/32" | 25 mm |
| | X WORKS D | Drive | 65890 | 30/32" | 24 mm |
| | X Line Energy T | Trailer | 69941 | 11/32" | 9 mm |
| | X Line Energy T Siped | Trailer | 23546 | 11/32" | 9 mm |
| | CD-LL | Drive | 57932 | 14/32" | 11 mm |
| | IT2 | Trailer | 68299 | 11/32" | 9 mm |

MICHELIN RETREAD QUICK REFERENCE TREAD GUIDE

STANDARD SIZES

Tread Size
 Size \ # DIE
 Spread Axle Sizes

| TREAD SIZE | RETREAD | POSITION | MSPN | TREAD DEPTH | |
|------------------|-----------------------------|--------------|--------|-------------|---------|
| | | | | 32nds | mm |
| 230 / 9.5 | CD-LL | Drive | 57932 | 14/32" | 11 mm |
| | IT2 | Trailer | 68299 | 11/32" | 9 mm |
| 232\#10 | XZY | All-position | 92668 | 18/32" | 14 mm |
| | XDA2 23 AT | Drive | 80338 | 23/32 | 18 mm |
| | XDHT | Drive | 87926 | 23/32" | 18 mm |
| | XDY | Drive | 48059 | 26/32" | 21 mm |
| 238\#10.5 | XZY | All-position | 47479 | 18/32" | 14 mm |
| 240 | XZA | All-position | 55653 | 20/32" | 16 mm |
| | XZE | All-position | 05814 | 18/32" | 14 mm |
| | XZE Siped | All-position | 07094 | 18/32" | 14 mm |
| | XZE2+ | All-position | 14935 | 20/32" | 16 mm |
| | XZU2 ⁽²⁾ | All-position | 11107 | 24/32" | 20 mm |
| | XZUS | All-position | 21725 | 26/32" | 21 mm |
| | XZY3 | All-position | 43241 | 24/32" | 19 mm |
| | X Line Energy D | Drive | 27540 | 21/32" | 16.5 mm |
| | XDHT | Drive | 10984 | 23/32" | 18 mm |
| | XDN2 | Drive | 22661 | 27/32" | 21.5 mm |
| | X Multi Energy D | Drive | 05189 | 21/32" | 17 mm |
| | XDS2+ | Drive | 17405 | 25/32" | 20 mm |
| | X Multi D | Drive | 89939 | 28/32" | 22 mm |
| | XDUS | Drive | 13197 | 32/32" | 25 mm |
| | XDY | Drive | 70606 | 32/32" | 25 mm |
| | XDY-EX | Drive | 73643 | 32/32" | 25 mm |
| | X Works D | Drive | 24439 | 30/32" | 24 mm |
| | X Line Energy T | Trailer | 70128 | 11/32" | 9 mm |
| | X Line Energy T Siped | Trailer | 23951 | 11/32" | 9 mm |
| | XTA | Trailer | 26264 | 16/32" | 13 mm |
| XTA-2 | Trailer | 75540 | 11/32" | 9 mm | |
| XTA-2 Siped | Trailer | 76895 | 11/32" | 9 mm | |
| 245/285 | X Multi T SA ⁽¹⁾ | Trailer | 17117 | 16/32" | 13 mm |

(1) Tread widths with two measurements have wings. The first number is tread base width in mm. The second number is the overall width, wing tip to tip.

(2) Federal Motor Carrier Safety Regulations, 9 C.F.R. § 395.75 (d), specify that "no bus shall be operated with regrooved, recapped or retreaded tires on the front wheels."

| TREAD SIZE | RETREAD | POSITION | MSPN | TREAD DEPTH | |
|-----------------------|-----------|--------------|--------|-------------|---------|
| | | | | 32nds | mm |
| 250 | XZE | All-position | 06514 | 18/32" | 14 mm |
| | XZE Siped | All-position | 07732 | 18/32" | 14 mm |
| | XZE2+ | All-position | 14439 | 20/32" | 16 mm |
| | XZU2 | All-position | 11486 | 24/32" | 20 mm |
| | XZUS | All-position | 88244 | 26/32" | 21 mm |
| | XZY | All-position | 64343 | 20/32" | 16 mm |
| | XZY3 | All-position | 48547 | 24/32" | 19 mm |
| | XDN2 | Drive | 11114 | 27/32" | 21.5 mm |
| | XDS2+ | Drive | 17979 | 25/32" | 20 mm |
| | X Multi D | Drive | 49017 | 28/32" | 22 mm |
| | XDUS | Drive | 17883 | 32/32" | 25 mm |
| | X Works D | Drive | 50960 | 30/32" | 24 mm |
| X Line Energy T | Trailer | 70263 | 11/32" | 9 mm | |
| X Line Energy T Siped | Trailer | 24032 | 11/32" | 9 mm | |
| 252\#12.0 | XDY | Drive | 88519 | 32/32" | 25 mm |
| 260 | XZE2+ | All-position | 03079 | 20/32" | 16 mm |
| | XDN2 | Drive | 12012 | 27/32" | 21.5 mm |
| | X Multi D | Drive | 49862 | 28/32" | 22 mm |
| | XTA | Trailer | 24867 | 16/32" | 13 mm |
| 270 | XZUS | All-position | 13656 | 26/32" | 21 mm |
| | XZY3 | All-position | 48974 | 24/32" | 19 mm |
| | XDN2 | Drive | 12230 | 27/32" | 21.5 mm |
| | XDS2+ | Drive | 10766 | 25/32" | 20 mm |
| | XDUS | Drive | 22587 | 32/32" | 25 mm |
| 280 | X Works D | Drive | 36616 | 30/32" | 24 mm |
| | XZUS | All-position | 68447 | 26/32" | 21 mm |

WIDE BASE AND X ONE SIZES

| TREAD SIZE | RETREAD | POSITION | MSPN | TREAD DEPTH | |
|----------------|-------------------------------------|--------------|-------|-------------|---------|
| | | | | 32nds | mm |
| 290 | X Tweek | All-position | 64012 | 32/32" | 15 mm |
| 290/345 | XZA Wide Base ⁽¹⁾ | All-position | 07525 | 19/32" | 15 mm |
| 290/345 | XZY3 Wide Base ⁽¹⁾ | All-position | 65721 | 22/32" | 17 mm |
| 290/345 | XTE2 Wide Base ⁽¹⁾ | Trailer | 34507 | 20/32" | 16 mm |
| 320/365 | XZA Wide Base ⁽¹⁾ | All-position | 08650 | 19/32" | 15 mm |
| 320/365 | XZY Wide Base ⁽¹⁾ | All-position | 30949 | 20/32" | 16 mm |
| 350/395 | XZL Wide Base ⁽¹⁾ | All-position | 75413 | 30/32" | 24 mm |
| 375/425 | X One XDS2 ^(1,2) | Drive | 43487 | 25/32" | 20 mm |
| 375/425 | X One Line Energy D2 ⁽¹⁾ | Drive | 77863 | 22/32" | 17 mm |
| 375/425 | X One Line Grip D ⁽¹⁾ | Drive | 68622 | 27/32" | 21 mm |
| 375/425 | X One Line Energy T2 ⁽¹⁾ | Trailer | 47715 | 13/32" | 10.5 mm |
| 375/425 | X One Multi Energy T ⁽¹⁾ | Trailer | 55784 | 15/32" | 12 mm |
| 385/435 | X One XZUS ⁽¹⁾ | All-position | 37269 | 23/32" | 18 mm |
| 385/435 | X One XZUS+ ⁽¹⁾ | All-position | 71480 | 29/32" | 23 mm |
| 385/435 | X One XDS2 ^(1,2) | Drive | 19620 | 25/32" | 20 mm |
| 385/435 | X One Line Grip D ⁽¹⁾ | Drive | 70235 | 27/32" | 21 mm |
| 385/435 | X One Multi Energy T ⁽¹⁾ | Trailer | 84963 | 15/32" | 12 mm |

(1) Tread widths with two measurements have wings. The first number is tread base width in mm. The second number is the overall width, wing tip to tip.

(2) Meets the USTMA (U.S. Tire Manufacturers Association) snow traction performance requirements. Meets the Tire and Rubber Association of Canada (TRAC) requirements for severe snow traction.



To learn more please contact your Michelin Sales Representative or visit

US : business.michelinman.com or CA : business.michelin.ca/en/

United States: Michelin North America, Inc. One Parkway South, Greenville, SC 29615, 1-888-622-2306

Canada: Michelin North America (Canada), Inc. 2500 Daniel Johnson, Suite 500, Laval, Quebec H7T 2P6, 1-888-622-2306

©2024 Michelin North America, Inc. All rights reserved. An Equal Opportunity Employer

©2024 MNA(C)I. All rights reserved.

Michelin North America, Inc. reserves the right to change product specifications at any time without notice or obligations. PDF only (06/24)