



REGIONAL APPLICATIONS

# THE MICHELIN X<sup>®</sup> MULTI ENERGY™ T2 TIRE

The lowest rolling resistance premium regional trailer tire on the market.<sup>(1)</sup>

Line Haul	Regional	Urban	On/Off Road
Recommended	Recommended	Acceptable	Acceptable



The Michelin X<sup>®</sup> MULTI ENERGY™ T2 tire delivers the lowest rolling resistance among premium regional trailer tires.<sup>(1)</sup>

Updated sidewall design

- New shape engineered to help improve fuel efficiency
- Durability you know and trust



The Michelin X<sup>®</sup> MULTI ENERGY™ T2 tire delivers 10% more miles than its predecessor, the Michelin XTE.<sup>(2)</sup>



(1) Calculated based on internal ISO28580 rolling resistance testing; Michelin X<sup>®</sup> Multi Energy™ T2 tire vs. Bridgestone R196A tire, Goodyear Endurance RST tire, and Continental Hybrid HT3 tire; all 11R22.5 size tires.

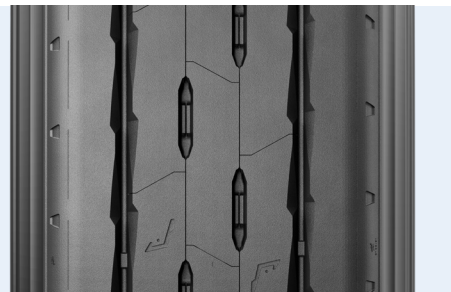
(2) Based on wear projections in an internal study of 5 fleets in regional usage at 50% worn, 59% removed, 256 total tires, 5/32" pull point, 295/75R22.5 LRG Michelin X<sup>®</sup> Multi Energy™ T2 vs. 275/80R22.5 LRG Michelin XTE (equivalent sizes). Actual on-road results may vary.  
(3) Based on internal tests against SmartWay<sup>®</sup> requirements. For more information on SmartWay<sup>®</sup> verified technologies, go to US: [www.epa.gov/smartway](http://www.epa.gov/smartway) or CA: [www.nrcan.gc.ca](http://www.nrcan.gc.ca).



Michelin's newest Regional trailer tire, featuring a re-designed sidewall and features to help deliver traction and durability in all weather conditions.

## Resists Scrub and Irregular Wear

- Rounded Shoulder
- 15/32nds tread depth
- Tread compound and sculpture engineered for regional use



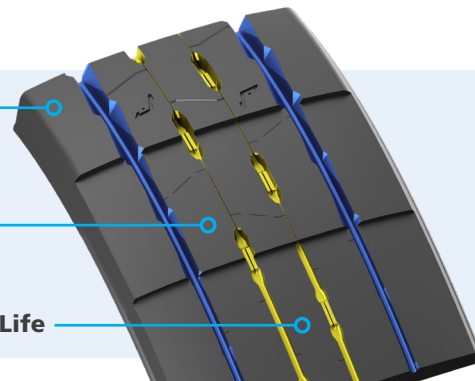
## Regenion Technology

Evolving grooves open as tread wears for long lasting traction and control in all-weather conditions.

New  
15/32nds

Mid-Life

End Life



Line Haul	Regional	Urban	On/Off Road
-----------	----------	-------	-------------

Recommended  Acceptable

Size	Load Range	Catalog Number	Tread Depth			Loaded Radius		Overall Diameter		Overall Width (‡)		Approved Wheels (Measuring wheel listed first.)	Min. Dual Spacing (‡)		Revs Per Mile	Max. Load and Pressure Single				Max. Load and Pressure Dual			
			32nds	mph	kph	in.	mm	in.	mm	in.	mm		in	mm		lbs.	psi	kg.	kPa	lbs.	psi	kg.	kPa
11R22.5	G	73169	15	75	120	19.1	484	41.0	1040	11.3	287	8.25, 7.50	12.5	318	506	6175	105	2800	720	5840	105	2650	720
295/75R22.5	G	98890	15	75	120	18.6	472	39.8	1012	11.0	281	8.25, 9.00	13.2	335	520	6175	110	2800	760	5675	110	2575	760

Note: Wheel listed first is the measuring wheel.

(\*) Exceeding the lawful speed limit is neither recommended nor endorsed.

(‡) Overall width will change 0.1 inch (2.5 mm) for each 1/4 inch change in wheel width. Minimum dual spacing should be adjusted accordingly.

Michelin tires and tubes are subject to a continuous development program. Michelin North America, Inc. reserves the right to change product specifications at any time without notice or obligations. MNA, Inc. continually updates its product information to reflect any changes in Industry Standards. Printed material may not reflect the current Load and Inflation information.

Please visit [business.michelinman.com](http://business.michelinman.com) for the latest product information. The actual load and inflation pressure used must not exceed the wheel manufacturer's maximum conditions.

Never exceed a wheel manufacturer's limits without permission from the component manufacturer.

TO FIND OUT MORE  
US: [business.michelinman.com](http://business.michelinman.com)  
CA: [business.michelin.ca](http://business.michelin.ca)

FIND US ON FACEBOOK  
[michelintruck](https://www.facebook.com/michelintruck)

VISIT US ON THE WEB  
US: [business.michelinman.com/contact-us](http://business.michelinman.com/contact-us)  
CA: [business.michelin.ca/contact-us](http://business.michelin.ca/contact-us)

CONTACT US BY TELEPHONE  
US: 1-888-622-2306  
CA: 1-888-622-2306