

MICHELIN CROSSGRIP



**RADIAL
TYRE**

**MULTIPLE PURPOSE
TYRE FOR 4-SEASON USE**



**CONSTRUCTION
SEGMENT**



MICHELIN

MICHELIN CROSSGRIP



1 VERSATILITY

Multi-purpose use for all seasons
Non-directional tread pattern with deep biting tread grooves for multiple applications and special compound designed for 4-season usage

2 ENERGY EFFICIENCY

Maximized handling on hard surface, high speed application
Michelin radial technology with enhanced 4 seasons rubber compound

3 COMFORT

Unmatched handling on hard surfaces and traction on slippery surfaces
Unique tread enhanced positioning, geometry and angles

TYRE CHARACTERISTICS

ADDITIONAL INFORMATION



VEHICLE EQUIPMENTS



A multi-purpose tyre for use on the road, grass and snow with a special rubber formula allowing the tyre to be used all year round

- Michelin Group
Product Manager

LEARN MORE

ON THE WEB
business.michelin.co.uk

TESTIMONIALS
youtube.com

UPDATED JANUARY 2023

TOOLS

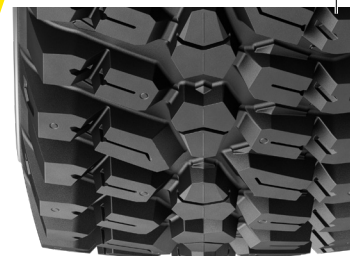
BEYOND ROAD SELECTOR
beyond-road.selector.michelingroup.com/CO

CONTACT

Please contact your local sales representative for more information.



MICHELIN CROSSGRIP



TECHNICAL CHARACTERISTICS

DESCRIPTION	CAI [MSPN]	Max. dist./ hour km [mile]	e mm [in]	D mm [in]	R' mm [in]	RC mm [in]	Tread depth mm [32rd]	Dual spacing mm [in]	75% Internal volume liter [gal]	Measuring recommended rim	Other approved rims <i>See end of document for more options</i>
250/80 R16 124A8/120D IND TL	564847 97221	-	259 10.2	804 31.5	364 14.3	2393 94.2	17 21	352 13.8	48 12.7	W8	W7, W9

Bar	0.80	1.20	1.60	2.00	2.40	2.60	2.80	3.00	3.20	3.40	3.60	3.80	4.00	4.20	4.40
<i>Psi</i>	12	17	23	29	35	38	41	44	46	49	52	55	58	61	64

Machine - use kg - lbs	COMPACT WHEEL LOADER / BACKHOE LOADER / TELEHANDLER														
STAT		1440	1760	2080	2240	2400	2560	2720	2880	3040	3200	3360	3520	3680	
		3175	3880	4585	4940	5290	5645	5995	6350	6700	7055	7410	7760	8115	
10 KM/H CYC.	940	1150	1355	1460	1565	1670	1770	1875	1980	2085	2190	2295	2400		
<i>6 MPH CYC.</i>		2070	2535	2985	3220	3450	3680	3900	4135	4365	4595	4830	5060	5290	
25 KM/H	625	740	850	1005	1160	1235	1315	1390	1465	1545	1620	1700	1775		
<i>15 MPH</i>	1380	1630	1875	2215	2555	2725	2900	3065	3230	3405	3570	3750	3915		
30 KM/H	615	720	820	965	1115	1185	1260	1335	1405	1480	1555	1625	1700		
<i>20 MPH</i>	1355	1585	1810	2125	2460	2610	2780	2945	3095	3265	3430	3585	3750		
40 KM/H	585	680	775	915	1050	1120	1190	1255	1325	1395	1465	1530	1600		
<i>25 MPH</i>	1290	1500	1710	2015	2315	2470	2625	2765	2920	3075	3230	3375	3525		
50 KM/H	680	775	915	1050	1120	1190	1255	1325	1395	1465	1530	1600			
<i>30 MPH</i>	1500	1710	2015	2315	2470	2625	2765	2920	3075	3230	3375	3525			
65 KM/H	545	665	790	910	970	1035	1095	1155	1215	1280	1340	1400			
<i>40 MPH</i>	1200	1465	1740	2005	2140	2280	2415	2545	2680	2820	2955	3085			

340/80 R18 143A8/138D IND TL	698283 31129	-	352 13.9	1000 39.2	452 17.8	2975 117.1	21 26	462 18.1	106 27.9	11	11SDC, 12, 12SDC W10, W11
-------------------------------------	-----------------	---	-------------	--------------	-------------	---------------	----------	-------------	-------------	----	---------------------------------

Bar	0.80	1.20	1.60	2.00	2.40	2.60	2.80	3.00	3.20	3.40	3.60	3.80	4.00	4.20	4.40
<i>Psi</i>	12	17	23	29	35	38	41	44	46	49	52	55	58	61	64

Machine - use kg - lbs	COMPACT WHEEL LOADER / BACKHOE LOADER / TELEHANDLER														
STAT		2450	2995	3540	3815	4090	4360	4635	4905	5180	5455	5725	6000	6270	
		5400	6605	7805	8410	9015	9610	10220	10815	11420	12025	12620	13230	13825	
10 KM/H CYC.	1600	1955	2310	2490	2670	2845	3025	3200	3380	3555	3735	3915	4090		
<i>6 MPH CYC.</i>		3525	4310	5095	5490	5885	6270	6670	7055	7450	7835	8235	8630	9015	
25 KM/H	1060	1255	1450	1715	1975	2105	2240	2370	2500	2630	2765	2895	3025		
<i>15 MPH</i>	2335	2765	3195	3780	4355	4640	4940	5225	5510	5800	6095	6380	6670		
30 KM/H	1045	1220	1390	1645	1900	2030	2155	2285	2410	2535	2665	2790	2915		
<i>20 MPH</i>	2305	2690	3065	3625	4190	4475	4750	5040	5315	5590	5875	6150	6425		
40 KM/H	1000	1160	1320	1550	1780	1895	2010	2125	2240	2360	2485	2605	2725		
<i>25 MPH</i>	2205	2555	2910	3415	3925	4180	4430	4685	4940	5205	5480	5745	6010		
50 KM/H	1160	1320	1555	1790	1905	2025	2140	2255	2375	2490	2610	2725			
<i>30 MPH</i>	2555	2910	3430	3945	4200	4465	4720	4970	5235	5490	5755	6010			
65 KM/H	930	1135	1335	1535	1635	1735	1835	1935	2035	2135	2235	2335			
<i>40 MPH</i>	2050	2500	2945	3385	3605	3825	4045	4265	4485	4705	4925	5150			

IMPORTANT: The inflation pressure is always determined according to the load per tyre, speed and work to be carried out.

Stat: static load at 0 mph., vehicle stationary. 6 mph. Cyc: max. speed 6 mph. with cyclic load. 15, 20, 25, 30 and 40 mph.: use on the road up to 15, 20, 25, 30 and 40 mph.

LEARN MORE

ON THE WEB
business.michelin.co.uk

TESTIMONIALS
youtube.com

UPDATED JANUARY 2023

TOOLS

BEYOND ROAD SELECTOR
beyond-road.selector.michelingroup.com/co

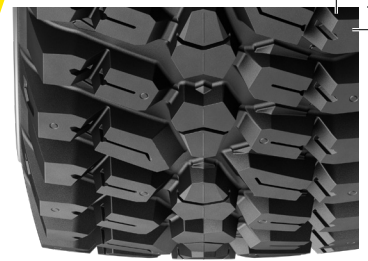
CONTACT

Please contact your local sales representative for more information.



MICHELIN

MICHELIN CROSSGRIP



TECHNICAL CHARACTERISTICS

DESCRIPTION	CAI [MSPN]	Max. dist./ hour km [mile]	e mm [in]	D mm [in]	R' mm [in]	RC mm [in]	Tread depth mm [32rd]	Dual spacing mm [in]	75% Internal volume liter [gal]	Measuring recommended rim	Other approved rims <i>See end of document for more options</i>
400/70 R20 149A8/144D IND TL	866487	-	403 15.9	1066 41.8	482 19	3169 124.8	24 30	536 21.1	142.5 37.6	DW13	DW13, W13

Bar Psi	0.80 12	1.20 17	1.60 23	2.00 29	2.40 35	2.60 38	2.80 41	3.00 44	3.20 46	3.40 49	3.60 52	3.80 55	4.00 58	4.20 61	4.40 64
------------	------------	------------	------------	------------	------------	------------	------------	------------	------------	------------	------------	------------	------------	------------	------------

Machine - use kg - lbs	COMPACT WHEEL LOADER / BACKHOE LOADER / TELEHANDLER														
STAT			2930 6460	3580 7895	4230 9325	4555 10040	4880 10760	5205 11475	5530 12190	5855 12910	6180 13625	6505 14340	6830 15060	7155 15775	7480 16490
10 KM/H CYC. 6 MPH CYC.			1910 4210	2335 5150	2760 6085	2970 6550	3180 7010	3395 7485	3605 7950	3820 8420	4030 8885	4245 9360	4455 9820	4670 10295	4880 10760
25 KM/H 15 MPH	1100 2425	1410 3110	1730 3815	2045 4510	2355 5190	2510 5535	2670 5885	2825 6230	2980 6570	3140 6925	3295 7265	3455 7615	3610 7960		
30 KM/H 20 MPH	1050 2315	1360 3000	1660 3660	1965 4330	2265 4995	2415 5325	2570 5665	2720 5995	2870 6325	3025 6670	3175 7000	3330 7340	3480 7670		
40 KM/H 25 MPH	990 2185	1270 2800	1550 3415	1825 4025	2100 4630	2240 4940	2375 5235	2515 5545	2650 5840	2800 6175	2950 6505	3100 6835	3250 7165		
50 KM/H 30 MPH		1270 2800	1550 3415	1825 4025	2100 4630	2240 4940	2375 5235	2515 5545	2650 5840	2800 6175	2950 6505	3100 6835	3250 7165		
65 KM/H 40 MPH		1100 2425	1350 2975	1595 3515	1840 4055	1960 4320	2080 4585	2205 4860	2325 5125	2445 5390	2565 5655	2680 5910	2800 6175		

DESCRIPTION	CAI [MSPN]	Max. dist./ hour km [mile]	e mm [in]	D mm [in]	R' mm [in]	RC mm [in]	Tread depth mm [32rd]	Dual spacing mm [in]	75% Internal volume liter [gal]	Measuring recommended rim	Other approved rims <i>See end of document for more options</i>
360/80 R24 150A8/145D IND TL	514449 15827	-	365 14.4	1192 46.7	545 21.5	3556 140	26 33	- -	150 39.6	DW12	W11

Bar Psi	0.80 12	1.20 17	1.60 23	2.00 29	2.40 35	2.60 38	2.80 41	3.00 44	3.20 46	3.40 49	3.60 52	3.80 55	4.00 58	4.20 61	4.40 64
------------	------------	------------	------------	------------	------------	------------	------------	------------	------------	------------	------------	------------	------------	------------	------------

Machine - use kg - lbs	COMPACT WHEEL LOADER / BACKHOE LOADER / TELEHANDLER														
STAT			3020 6660	3690 8135	4360 9610	4695 10350	5025 11080	5360 11815	5695 12555	6030 13295	6365 14030	6700 14770	7035 15510	7370 16250	7705 16985
10 KM/H CYC. 6 MPH CYC.			1970 4345	2405 5300	2840 6260	3060 6745	3280 7230	3495 7705	3715 8190	3930 8665	4150 9150	4370 9635	4590 10120	4805 10595	5025 11080
25 KM/H 15 MPH	1315 2900	1545 3405	1775 3915	2100 4630	2425 5345	2585 5700	2745 6050	2910 6415	3070 6770	3235 7130	3395 7485	3560 7850	3720 8200		
30 KM/H 20 MPH	1295 2855	1505 3320	1715 3780	2030 4475	2340 5160	2495 5500	2655 5855	2810 6195	2965 6535	3120 6880	3275 7220	3430 7560	3585 7905		
40 KM/H 25 MPH	1240 2735	1435 3165	1625 3585	1915 4220	2200 4850	2345 5170	2490 5490	2630 5800	2775 6120	2920 6435	3065 6755	3205 7065	3350 7385		
50 KM/H 30 MPH		1435 3165	1625 3585	1915 4220	2200 4850	2345 5170	2490 5490	2630 5800	2775 6120	2920 6435	3065 6755	3205 7065	3350 7385		
65 KM/H 40 MPH		1150 2535	1395 3075	1645 3625	1895 4180	2020 4455	2145 4730	2270 5005	2395 5280	2520 5555	2650 5840	2775 6120	2900 6395		

IMPORTANT: The inflation pressure is always determined according to the load per tyre, speed and work to be carried out.
Stat: static load at 0 mph., vehicle stationary. 6 mph. Cyc: max. speed 6 mph. with cyclic load. 15, 20, 25, 30 and 40 mph.: use on the road up to 15, 20, 25, 30 and 40 mph.

LEARN MORE

ON THE WEB
business.michelin.co.uk

TESTIMONIALS
youtube.com

UPDATED JANUARY 2023

TOOLS

BEYOND ROAD SELECTOR
beyond-road.selector.michelingroup.com/co

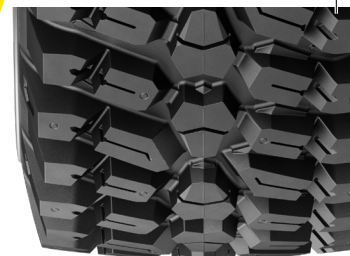
CONTACT

Please contact your local sales representative for more information.



MICHELIN

MICHELIN CROSSGRIP



TECHNICAL CHARACTERISTICS

DESCRIPTION	CAI [MSPN]	Max. dist./ hour km [mile]	e mm [in]	D mm [in]	R' mm [in]	RC mm [in]	Tread depth mm [32rd]	Dual spacing mm [in]	75% Internal volume liter [gal]	Measuring recommended rim	Other approved rims <i>See end of document for more options</i>
400/80 R24 156A8/151D IND TL	920345 76135	-	413 16.3	1240 48.6	561 22.1	3689 145.2	26 33	536 21.1	187 49.3	DW13L	DW12, DW14L

Bar Psi	0.80 12	1.20 17	1.60 23	2.00 29	2.40 35	2.60 38	2.80 41	3.00 44	3.20 46	3.40 49	3.60 52	3.80 55	4.00 58	4.20 61	4.40 64
------------	------------	------------	------------	------------	------------	------------	------------	------------	------------	------------	------------	------------	------------	------------	------------

Machine - use kg - lbs	COMPACT WHEEL LOADER / BACKHOE LOADER / TELEHANDLER														
STAT		3600	4400	5200	5600	6000	6400	6800	7200	7600	8000	8400	8800	9200	
		7935	9700	11465	12345	13230	14110	14990	15875	16755	17635	18520	19400	20285	
10 KM/H CYC. 6 MPH CYC.		2340	2860	3385	3645	3905	4165	4430	4690	4950	5215	5475	5740	6000	
		5160	6305	7465	8035	8610	9180	9765	10340	10915	11495	12070	12655	13230	
25 KM/H 15 MPH	1550 3415	1835 4045	2120 4675	2450 5400	2775 6120	2940 6480	3100 6835	3265 7200	3430 7560	3665 8080	3905 8610	4140 9125	4375 9645		
30 KM/H 20 MPH	1525 3360	1795 3955	2060 4540	2385 5260	2710 5975	2875 6340	3035 6690	3200 7055	3360 7410	3590 7915	3825 8435	4055 8940	4290 9460		
40 KM/H 25 MPH	1460 3220	1705 3760	1950 4300	2290 5050	2635 5810	2805 6185	2975 6560	3145 6935	3315 7310	3490 7695	3660 8070	3830 8445	4000 8820		
50 KM/H 30 MPH	1705 3760	1950 4300	2290 5050	2635 5810	2805 6185	2975 6560	3145 6935	3315 7310	3490 7695	3660 8070	3830 8445	4000 8820			
65 KM/H 40 MPH	1355 2985	1640 3615	1930 4255	2225 4905	2370 5225	2515 5545	2660 5865	2805 6185	2965 6535	3130 6900	3290 7255	3450 7605			

DESCRIPTION	CAI [MSPN]	Max. dist./ hour km [mile]	e mm [in]	D mm [in]	R' mm [in]	RC mm [in]	Tread depth mm [32rd]	Dual spacing mm [in]	75% Internal volume liter [gal]	Measuring recommended rim	Other approved rims <i>See end of document for more options</i>
440/80 R24 161A8/156D IND TL	131846 74806	-	447 17.8	1314 51.5	592 23.3	3906 153.8	26 33	580 22.8	234 61.8	DW14	14, DW15L

Bar Psi	0.80 12	1.20 17	1.60 23	2.00 29	2.40 35	2.60 38	2.80 41	3.00 44	3.20 46	3.40 49	3.60 52	3.80 55	4.00 58	4.20 61	4.40 64
------------	------------	------------	------------	------------	------------	------------	------------	------------	------------	------------	------------	------------	------------	------------	------------

Machine - use kg - lbs	COMPACT WHEEL LOADER / BACKHOE LOADER / TELEHANDLER														
STAT		4160	5085	6010	6475	6940	7400	7865	8325	8790	9255	9715	10180	10640	
		9170	11210	13250	14275	15300	16315	17340	18355	19380	20405	21420	22445	23455	
10 KM/H CYC. 6 MPH CYC.		2710	3315	3920	4220	4525	4825	5125	5430	5730	6035	6335	6640	6940	
		5975	7310	8640	9305	9975	10635	11300	11970	12630	13305	13965	14640	15300	
25 KM/H 15 MPH	1800 3970	2130 4695	2460 5425	2905 6405	3350 7385	3575 7880	3795 8365	4020 8865	4240 9350	4465 9845	4685 10330	4910 10825	5130 11310		
30 KM/H 20 MPH	1770 3900	2070 4565	2370 5225	2800 6175	3230 7120	3445 7595	3660 8070	3875 8545	4090 9015	4305 9490	4520 9965	4735 10440	4950 10915		
40 KM/H 25 MPH	1700 3750	1970 4345	2240 4940	2640 5820	3035 6690	3235 7130	3435 7575	3630 8005	3830 8445	4030 8885	4230 9325	4425 9755	4625 10195		
50 KM/H 30 MPH	1970 4345	2240 4940	2640 5820	3035 6690	3235 7130	3435 7575	3630 8005	3830 8445	4030 8885	4230 9325	4425 9755	4625 10195			
65 KM/H 40 MPH	1575 3470	1880 4145	2235 4925	2585 5700	2765 6095	2940 6480	3115 6865	3295 7265	3470 7650	3645 8035	3825 8435	4000 8820			

IMPORTANT: The inflation pressure is always determined according to the load per tyre, speed and work to be carried out.
Stat: static load at 0 mph., vehicle stationary. 6 mph. Cyc: max. speed 6 mph. with cyclic load. 15, 20, 25, 30 and 40 mph.: use on the road up to 15, 20, 25, 30 and 40 mph.

LEARN MORE

ON THE WEB
business.michelin.co.uk

TESTIMONIALS
[youtube.com](https://www.youtube.com)

UPDATED JANUARY 2023

TOOLS

BEYOND ROAD SELECTOR
beyond-road.selector.michelingroup.com/co

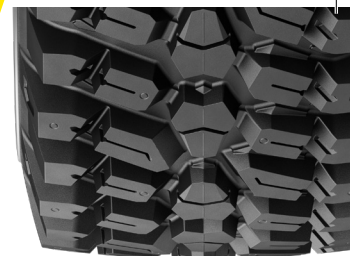
CONTACT

Please contact your local sales representative for more information.



MICHELIN

MICHELIN CROSSGRIP



TECHNICAL CHARACTERISTICS

DESCRIPTION	CAI [MSPN]	Max. dist./ hour km [mile]	e mm [in]	D mm [in]	R' mm [in]	RC mm [in]	Tread depth mm [32rd]	Dual spacing mm [in]	75% Internal volume liter [gal]	Measuring recommended rim	Other approved rims <i>See end of document for more options</i>				
460/70 R24 159A8/154D IND TL	304047 11050	-	475 18.7	1246 48.9	564 22.2	3708 146	26 33	597 23.5	217 57.4	DW15L	14, 16, DW14L, DW16A, TW14L				
Bar	0.80	1.20	1.60	2.00	2.40	2.60	2.80	3.00	3.20	3.40	3.60	3.80	4.00	4.20	4.40
<i>Psi</i>	12	17	23	29	35	38	41	44	46	49	52	55	58	61	64
Machine - use kg - lbs	COMPACT WHEEL LOADER / BACKHOE LOADER / TELEHANDLER														
STAT		3940	4815	5690	6125	6560	7000	7435	7875	8310	8750	9185	9625	10060	
		8685	10615	12545	13505	14460	15430	16390	17360	18320	19290	20250	21220	22180	
10 KM/H CYC. 6 MPH CYC.		2570	3140	3710	3995	4280	4565	4850	5135	5420	5705	5990	6275	6560	
		5665	6925	8180	8805	9435	10065	10690	11320	11950	12575	13205	13835	14460	
25 KM/H 15 MPH	1715	2020	2320	2745	3165	3375	3585	3800	4010	4225	4435	4650	4860		
	3780	4455	5115	6050	6980	7440	7905	8380	8840	9315	9780	10250	10715		
30 KM/H 20 MPH	1685	1965	2240	2650	3055	3260	3460	3665	3870	4075	4275	4480	4680		
	3715	4330	4940	5840	6735	7185	7630	8080	8530	8985	9425	9875	10320		
40 KM/H 25 MPH	1615	1870	2120	2495	2870	3060	3250	3435	3625	3810	4000	4185	4375		
	3560	4125	4675	5500	6325	6745	7165	7575	7990	8400	8820	9225	9645		
50 KM/H 30 MPH	1870	2120	2495	2870	3060	3250	3435	3625	3810	4000	4185	4375			
	4125	4675	5500	6325	6745	7165	7575	7990	8400	8820	9225	9645			
65 KM/H 40 MPH	1500	1820	2140	2465	2625	2785	2945	3105	3270	3430	3590	3750			
	3305	4010	4720	5435	5785	6140	6495	6845	7210	7560	7915	8265			
500/70 R24 164A8/159D IND TL	875270 63574	-	513 20.2	1292 50.7	579 22.8	3836 151	26 33	654 25.7	264 69.7	DW16A	DW15L, DW16L, TW16L				
Bar	0.80	1.20	1.60	2.00	2.40	2.60	2.80	3.00	3.20	3.40	3.60	3.80	4.00	4.20	4.40
<i>Psi</i>	12	17	23	29	35	38	41	44	46	49	52	55	58	61	64
Machine - use kg - lbs	COMPACT WHEEL LOADER / BACKHOE LOADER / TELEHANDLER														
STAT		4505	5505	6500	7000	7500	8000	8495	8995	9495	9995	10495	10995	11495	
		9930	12135	14330	15430	16535	17635	18730	19830	20935	22035	23140	24240	25340	
10 KM/H CYC. 6 MPH CYC.		2935	3585	4240	4565	4890	5215	5545	5870	6195	6520	6845	7170	7495	
		6470	7905	9350	10065	10780	11495	12225	12940	13660	14375	15090	15805	16525	
25 KM/H 15 MPH	1950	2300	2650	3135	3620	3860	4100	4345	4585	4830	5070	5315	5555		
	4300	5070	5840	6910	7980	8510	9040	9580	10110	10650	11175	11720	12245		
30 KM/H 20 MPH	1920	2240	2560	3025	3495	3725	3960	4190	4425	4655	4890	5120	5350		
	4235	4940	5645	6670	7705	8210	8730	9235	9755	10265	10780	11290	11795		
40 KM/H 25 MPH	1840	2135	2425	2855	3285	3500	3715	3925	4140	4355	4570	4785	5000		
	4055	4705	5345	6295	7240	7715	8190	8655	9125	9600	10075	10550	11025		
50 KM/H 30 MPH	2135	2425	2855	3285	3500	3715	3925	4140	4355	4570	4785	5000			
	4705	5345	6295	7240	7715	8190	8655	9125	9600	10075	10550	11025			
65 KM/H 40 MPH	1710	2080	2450	2815	3000	3185	3365	3550	3735	3920	4100	4285			
	3770	4585	5400	6205	6615	7020	7420	7825	8235	8640	9040	9445			

IMPORTANT: The inflation pressure is always determined according to the load per tyre, speed and work to be carried out.
Stat: static load at 0 mph., vehicle stationary. 6 mph. Cyc: max. speed 6 mph. with cyclic load. 15, 20, 25, 30 and 40 mph.: use on the road up to 15, 20, 25, 30 and 40 mph.

LEARN MORE

ON THE WEB
business.michelin.co.uk

TESTIMONIALS
youtube.com

UPDATED JANUARY 2023

TOOLS

BEYOND ROAD SELECTOR
beyond-road.selector.michelingroup.com/co

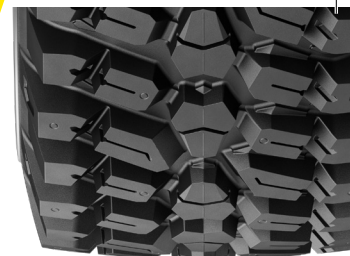
CONTACT

Please contact your local sales representative for more information.



MICHELIN

MICHELIN CROSSGRIP



TECHNICAL CHARACTERISTICS

DESCRIPTION	CAI [MSPN]	Max. dist./ hour km [mile]	e mm [in]	D mm [in]	R' mm [in]	RC mm [in]	Tread depth mm [32rd]	Dual spacing mm [in]	75% Internal volume liter [gal]	Measuring recommended rim	Other approved rims <i>See end of document for more options</i>				
430/80 R26 167A8/162D IND TL	427974	-	503 19.8	1423 55.8	643 25.3	4234 166.7	25 31	626 24.6	302.2 79.8	DW16A	DW15L				
Bar	0.80	1.20	1.60	2.00	2.40	2.60	2.80	3.00	3.20	3.40	3.60	3.80	4.00	4.20	4.40
<i>Psi</i>	12	17	23	29	35	38	41	44	46	49	52	55	58	61	64
Machine - use kg - lbs	COMPACT WHEEL LOADER / BACKHOE LOADER / TELEHANDLER														
STAT		4900 10805	5990 13205	7080 15610	7625 16810	8170 18010	8715 19215	9260 20415	9805 21615	10350 22820	10895 24020	11440 25220	11985 26420	12530 27625	
10 KM/H CYC. 6 MPH CYC.		3200 7055	3910 8620	4620 10185	4975 10970	5330 11750	5685 12535	6040 13315	6395 14100	6750 14880	7105 15665	7460 16445	7815 17230	8170 18010	
25 KM/H 15 MPH	1840 4055	2370 5225	2890 6370	3420 7540	3945 8695	4210 9280	4475 9865	4735 10440	5000 11025	5265 11605	5525 12180	5790 12765	6050 13340		
30 KM/H 20 MPH	1770 3900	2280 5025	2790 6150	3300 7275	3805 8390	4060 8950	4315 9515	4565 10065	4820 10625	5075 11190	5330 11750	5580 12300	5835 12865		
40 KM/H 25 MPH	1660 3660	2130 4695	2575 5675	3055 6735	3540 7805	3780 8335	4020 8865	4260 9390	4500 9920	4740 10450	4975 10970	5215 11495	5450 12015		
50 KM/H 30 MPH		2130 4695	2640 5820	3120 6880	3595 7925	3835 8455	4070 8975	4310 9500	4550 10030	4775 10525	5000 11025	5225 11520	5450 12015		
65 KM/H 40 MPH		1850 4695	2270 5005	2680 5910	3085 6800	3290 7255	3490 7695	3695 8145	3900 8600	4115 9070	4325 9535	4540 10010	4750 10470		
400/80 R28 158A8/153D IND TL	219659 38141	-	412 16.2	1354 53.1	616 24.3	4034 158.8	26 33	536 21.1	159 42	DW13	DW11, W12, W13				
Bar	0.80	1.20	1.60	2.00	2.40	2.60	2.80	3.00	3.20	3.40	3.60	3.80	4.00	4.20	4.40
<i>Psi</i>	12	17	23	29	35	38	41	44	46	49	52	55	58	61	64
Machine - use kg - lbs	COMPACT WHEEL LOADER / BACKHOE LOADER / TELEHANDLER														
STAT		3830 8445	4680 10320	5530 12190	5955 13130	6375 14055	6800 14990	7225 15930	7650 16865	8075 17800	8500 18740	8925 19675	9350 20615	9775 21550	
10 KM/H CYC. 6 MPH CYC.		2500 5510	3055 6735	3605 7950	3885 8565	4160 9170	4435 9780	4710 10385	4990 11000	5265 11605	5545 12225	5820 12830	6100 13450	6375 14055	
25 KM/H 15 MPH	1660 3660	1960 4320	2255 4970	2665 5875	3075 6780	3280 7230	3485 7685	3690 8135	3895 8585	4100 9040	4310 9500	4515 9955	4720 10405		
30 KM/H 20 MPH	1635 3605	1905 4200	2175 4795	2570 5665	2970 6550	3165 6980	3365 7420	3560 7850	3760 8290	3955 8720	4155 9160	4350 9590	4545 10020		
40 KM/H 25 MPH	1565 3450	1815 4000	2060 4540	2425 5345	2790 6150	2975 6560	3155 6955	3340 7365	3520 7760	3705 8170	3885 8565	4070 8975	4250 9370		
50 KM/H 30 MPH		1815 4000	2060 4540	2425 5345	2790 6150	2975 6560	3155 6955	3340 7365	3520 7760	3705 8170	3885 8565	4070 8975	4250 9370		
65 KM/H 40 MPH		1455 3210	1770 3900	2085 4595	2395 5280	2550 5620	2710 5975	2865 6315	3020 6660	3175 7000	3335 7350	3490 7695	3645 8035		

IMPORTANT: The inflation pressure is always determined according to the load per tyre, speed and work to be carried out.
Stat: static load at 0 mph., vehicle stationary. 6 mph. Cyc: max. speed 6 mph. with cyclic load. 15, 20, 25, 30 and 40 mph.: use on the road up to 15, 20, 25, 30 and 40 mph.

LEARN MORE

ON THE WEB
business.michelin.co.uk

TESTIMONIALS
youtube.com

UPDATED JANUARY 2023

TOOLS

BEYOND ROAD SELECTOR
beyond-road.selector.michelingroup.com/co

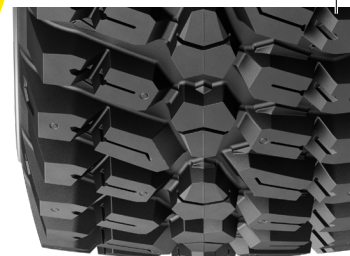
CONTACT

Please contact your local sales representative for more information.



MICHELIN

MICHELIN CROSSGRIP



TECHNICAL CHARACTERISTICS

DESCRIPTION	CAI [MSPN]	Max. dist./ hour km [mile]	e mm [in]	D mm [in]	R' mm [in]	RC mm [in]	Tread depth mm [32rd]	Dual spacing mm [in]	75% Internal volume liter [gal]	Measuring recommended rim	Other approved rims See end of document for more options
440/80 R28 163A8/158D IND TL	439765 52613	-	450 17.5	1410 55.3	635 25	4197 165.2	26 33	580 22.8	259 68.3	DW14L	DW15L

Bar	0.80	1.20	1.60	2.00	2.40	2.60	2.80	3.00	3.20	3.40	3.60	3.80	4.00	4.20	4.40
<i>Psi</i>	12	17	23	29	35	38	41	44	46	49	52	55	58	61	64

Machine - use kg - lbs	COMPACT WHEEL LOADER / BACKHOE LOADER / TELEHANDLER														
STAT		4370	5485	6605	7165	7720	8280	8840	9395	9955	10515	11075	11630	12190	
		9635	12090	14560	15795	17020	18255	19490	20710	21945	23180	24415	25640	26875	
10 KM/H CYC.		2850	3700	4550	4975	5400	5825	6250	6675	7100	7525	7950			
6 MPH CYC.		6285	8155	10030	10970	11905	12840	13780	14715	15655	16590	17525			
25 KM/H	1925	2275	2620	3090	3565	3800	4035	4270	4505	4730	4960	5185	5410		
15 MPH	4245	5015	5775	6810	7860	8380	8895	9415	9930	10430	10935	11430	11925		
30 KM/H	1895	2210	2525	2975	3425	3645	3870	4095	4320	4545	4770	4990	5215		
20 MPH	4180	4870	5565	6560	7550	8035	8530	9030	9525	10020	10515	11000	11495		
40 KM/H	1815	2090	2360	2780	3200	3410	3620	3825	4035	4245	4455	4665	4875		
25 MPH	4000	4610	5205	6130	7055	7520	7980	8435	8895	9360	9820	10285	10750		
50 KM/H		2090	2360	2780	3200	3410	3620	3825	4035	4245	4455	4665	4875		
30 MPH		4610	5205	6130	7055	7520	7980	8435	8895	9360	9820	10285	10750		
65 KM/H		1685	2035	2405	2775	2960	3145	3325	3510	3695	3880	4065	4250		
40 MPH		3715	4485	5300	6120	6525	6935	7330	7740	8145	8555	8960	9370		

DESCRIPTION	CAI [MSPN]	Max. dist./ hour km [mile]	e mm [in]	D mm [in]	R' mm [in]	RC mm [in]	Tread depth mm [32rd]	Dual spacing mm [in]	75% Internal volume liter [gal]	Measuring recommended rim	Other approved rims See end of document for more options
440/80 R34 159A8/155D IND TL	967528 20271	-	431 17	1580 62	718 28.3	4706 185.3	28 35	- -	295 78	DW14L	DW15L, DW16L

Bar	0.80	1.20	1.60	2.00	2.40	2.60	2.80	3.00	3.20	3.40	3.60	3.80	4.00	4.20	4.40
<i>Psi</i>	12	17	23	29	35	38	41	44	46	49	52	55	58	61	64

Machine - use kg - lbs	COMPACT WHEEL LOADER / BACKHOE LOADER / TELEHANDLER														
STAT		5925	6930	7935	8470	9000	9535	10065	10640	11215					
		13060	15280	17495	18675	19840	21020	22190	23455	24725					
10 KM/H CYC.		3270	3945	4615	4940	5265	5590	5915	6240	6565					
6 MPH CYC.		7210	8695	10175	10890	11605	12325	13040	13755	14475					
25 KM/H	2105	2420	2730	3195	3655	3905	4150	4395	4640						
15 MPH	4640	5335	6020	7045	8060	8610	9150	9690	10230						
30 KM/H	2070	2375	2680	3135	3590	3830	4070	4310	4550						
20 MPH	4565	5235	5910	6910	7915	8445	8975	9500	10030						
40 KM/H	1985	2280	2575	3015	3450	3685	3915	4145	4375						
25 MPH	4375	5025	5675	6645	7605	8125	8630	9140	9645						
50 KM/H		2280	2575	3015	3450	3680	3910	4145	4375						
30 MPH		5025	5675	6645	7605	8115	8620	9140	9645						
65 KM/H		1845	2255	2650	3045	3255	3460	3670	3875						
40 MPH		4070	4970	5840	6715	7175	7630	8090	8545						

IMPORTANT: The inflation pressure is always determined according to the load per tyre, speed and work to be carried out.
Stat: static load at 0 mph., vehicle stationary. 6 mph. Cyc: max. speed 6 mph. with cyclic load. 15, 20, 25, 30 and 40 mph.: use on the road up to 15, 20, 25, 30 and 40 mph.

LEARN MORE

ON THE WEB
business.michelin.co.uk

TESTIMONIALS
[youtube.com](https://www.youtube.com)

UPDATED JANUARY 2023

TOOLS

BEYOND ROAD SELECTOR
beyond-road.selector.michelingroup.com/co

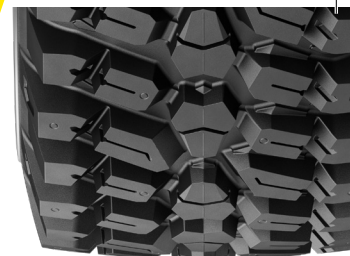
CONTACT

Please contact your local sales representative for more information.



MICHELIN

MICHELIN CROSSGRIP



TECHNICAL CHARACTERISTICS

DESCRIPTION	CAI [MSPN]	Max. dist./ hour km [mile]	e mm [in]	D mm [in]	R' mm [in]	RC mm [in]	Tread depth mm [32rd]	Dual spacing mm [in]	75% Internal volume liter [gal]	Measuring recommended rim	Other approved rims <i>See end of document for more options</i>
480/80 R34 164A8/159D IND TL	333253 56587	-	477 18.8	1648 64.6	743 29.3	4900 192.9	28 35	- -	361 95.5	DW15L	DW16L, DW18L

Bar	0.80	1.20	1.60	2.00	2.40	2.60	2.80	3.00	3.20	3.40	3.60	3.80	4.00	4.20	4.40
<i>Psi</i>	12	17	23	29	35	38	41	44	46	49	52	55	58	61	64

Machine - use kg - lbs	COMPACT WHEEL LOADER / BACKHOE LOADER / TELEHANDLER														
STAT			6670	7935	9200	9775	10350	10925	11500	12190	12880				
			14705	17495	20285	21550	22820	24085	25355	26875	28395				
10 KM/H CYC.			3645	4485	5325	5690	6050	6415	6775	7140	7500				
<i>6 MPH CYC.</i>			8035	9890	11740	12545	13340	14145	14935	15740	16535				
25 KM/H	2405	2740	3075	3660	4240	4505	4770	5035	5300						
<i>15 MPH</i>	5300	6040	6780	8070	9350	9930	10515	11100	11685						
30 KM/H	2370	2695	3015	3590	4160	4420	4680	4940	5200						
<i>20 MPH</i>	5225	5940	6645	7915	9170	9745	10320	10890	11465						
40 KM/H	2270	2585	2900	3450	4000	4250	4500	4750	5000						
<i>25 MPH</i>	5005	5700	6395	7605	8820	9370	9920	10470	11025						
50 KM/H	2585	2900	3450	4000	4250	4500	4750	5000							
<i>30 MPH</i>	5700	6395	7605	8820	9370	9920	10470	11025							
65 KM/H	2105	2540	3020	3500	3720	3940	4155	4375							
<i>40 MPH</i>	4640	5600	6660	7715	8200	8685	9160	9645							

480/80 R38 166A8/161D IND TL	846732 06819	-	478 18.8	1757 68.9	791 31.1	5293 208.4	29 37	626 24.6	416 109.9	DW15L	DW16L, DW18L
-------------------------------------	------------------------	---	--------------------	---------------------	--------------------	----------------------	-----------------	--------------------	---------------------	--------------	---------------------

Bar	0.80	1.20	1.60	2.00	2.40	2.60	2.80	3.00	3.20	3.40	3.60	3.80	4.00	4.20	4.40
<i>Psi</i>	12	17	23	29	35	38	41	44	46	49	52	55	58	61	64

Machine - use kg - lbs	COMPACT WHEEL LOADER / BACKHOE LOADER / TELEHANDLER														
STAT			5925	7275	8625	9220	9815	10410	11000	11595	12190				
			13060	16040	19015	20325	21640	22950	24250	25565	26875				
10 KM/H CYC.			3865	4745	5625	6015	6400	6790	7175	7565	7950				
<i>6 MPH CYC.</i>			8520	10460	12400	13260	14110	14970	15820	16680	17525				
25 KM/H	2535	2900	3260	3885	4505	4785	5065	5340	5620						
<i>15 MPH</i>	5590	6395	7185	8565	9930	10550	11165	11775	12390						
30 KM/H	2495	2850	3200	3810	4420	4695	4965	5240	5510						
<i>20 MPH</i>	5500	6285	7055	8400	9745	10350	10945	11550	12145						
40 KM/H	2390	2735	3075	3630	4190	4465	4745	5020	5300						
<i>25 MPH</i>	5270	6030	6780	8005	9235	9845	10460	11065	11685						
50 KM/H	2735	3075	3630	4190	4465	4745	5020	5300							
<i>30 MPH</i>	6030	6780	8005	9235	9845	10460	11065	11685							
65 KM/H	2220	2690	3175	3660	3900	4140	4385	4625							
<i>40 MPH</i>	4895	5930	7000	8070	8600	9125	9665	10195							

IMPORTANT: The inflation pressure is always determined according to the load per tyre, speed and work to be carried out.

Stat: static load at 0 mph., vehicle stationary. 6 mph. Cyc: max. speed 6 mph. with cyclic load. 15, 20, 25, 30 and 40 mph.: use on the road up to 15, 20, 25, 30 and 40 mph.

LEARN MORE

ON THE WEB
business.michelin.co.uk

TESTIMONIALS
youtube.com

UPDATED JANUARY 2023

TOOLS

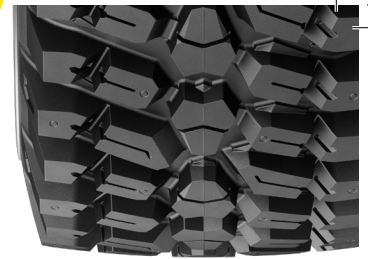
BEYOND ROAD SELECTOR
beyond-road.selector.michelingroup.com/co

CONTACT

Please contact your local sales representative for more information.



MICHELIN CROSSGRIP



TECHNICAL CHARACTERISTICS

DESCRIPTION	CAI [MSPN]	Max. dist./ hour km [mile]	e mm [in]	D mm [in]	R' mm [in]	RC mm [in]	Tread depth mm [32rd]	Dual spacing mm [in]	75% Internal volume liter [gal]	Measuring recommended rim	Other approved rims <i>See end of document for more options</i>				
540/80 R38 172A8/167D IND TL	567367 65312	-	561 22.1	1856 72.8	832 32.8	5511 217	28 35	699 27.5	523 138.3	DW18L	DW16L				
Bar	0.80	1.20	1.60	2.00	2.40	2.60	2.80	3.00	3.20	3.40	3.60	3.80	4.00	4.20	4.40
<i>Psi</i>	12	17	23	29	35	38	41	44	46	49	52	55	58	61	64
Machine - use kg - lbs	COMPACT WHEEL LOADER / BACKHOE LOADER / TELEHANDLER														
STAT		10345	11220	12090	12690	13290	13890	14490	15370	16250					
		22805	24735	26655	27975	29300	30620	31945	33885	35825					
10 KM/H CYC.		6765	7340	7910	8290	8670	9050	9430	10030	10630					
<i>6 MPH CYC.</i>		14915	16180	17440	18275	19115	19950	20790	22110	23435					
25 KM/H	3035	3905	4770	5175	5575	5845	6115	6380	6650						
<i>15 MPH</i>	6690	8610	10515	11410	12290	12885	13480	14065	14660						
30 KM/H	2985	3840	4695	5090	5485	5750	6015	6275	6540						
<i>20 MPH</i>	6580	8465	10350	11220	12090	12675	13260	13835	14420						
40 KM/H	2860	3680	4500	4950	5400	5625	5850	6075	6300						
<i>25 MPH</i>	6305	8115	9920	10915	11905	12400	12895	13395	13890						
50 KM/H	3455	4225	4640	5055	5265	5470	5680	5885							
<i>30 MPH</i>	7615	9315	10230	11145	11605	12060	12520	12975							
65 KM/H	3200	3910	4295	4680	4875	5065	5260	5450							
<i>40 MPH</i>	7055	8620	9470	10320	10750	11165	11595	12015							

IMPORTANT: The inflation pressure is always determined according to the load per tyre, speed and work to be carried out.
Stat: static load at 0 mph., vehicle stationary. 6 mph. Cyc: max. speed 6 mph. with cyclic load. 15, 20, 25, 30 and 40 mph.: use on the road up to 15, 20, 25, 30 and 40 mph.

LEARN MORE

ON THE WEB
business.michelin.co.uk

TESTIMONIALS
youtube.com

UPDATED JANUARY 2023

TOOLS

BEYOND ROAD SELECTOR
beyond-road.selector.michelingroup.com/co

CONTACT

Please contact your local sales representative for more information.

