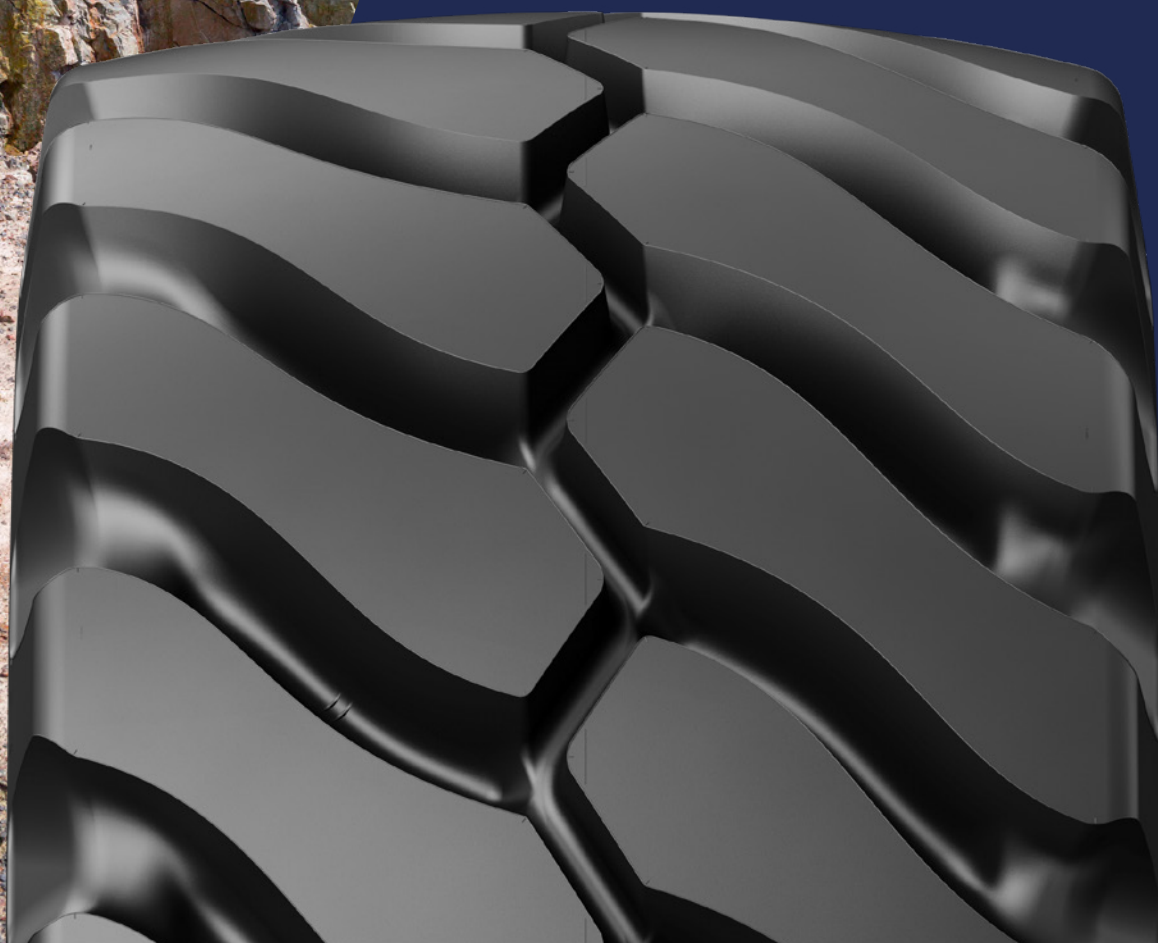


MICHELIN XTRA POWER L5



**RADIAL
TIRE**

**FACEWORK
AT FULL POWER**



**CONSTRUCTION
SEGMENT**



MICHELIN

MICHELIN XTRA POWER L5



1 ROBUSTNESS

Designed with reinforced steel crown belt package
Provides more tire crown protection ⁽¹⁾ (up to + 30% steel plies) to respond the strongest loading cycles

2 PRODUCTIVITY

Up to + 16% load capacity ⁽¹⁾ at high temperature for aggressive conditions
Casing designed with one more* load rating vs XLDD2 range with up to 32500 kg/71663 lbs ⁽²⁾ and up to 10 km ⁽²⁾ in one hour / 6.2 miles in one hour at 47°

3 COMFORT

Non directional sculpture
Provides an optimized response to forward and reverse cycle in face work application

TIRE CHARACTERISTICS

ADDITIONAL INFORMATION

VEHICLE EQUIPMENT



MICHELIN XTRA POWER L5 is designed for aggressive usages on hard rock in face work application

MICHELIN GROUP -
Product Manager

⁽¹⁾ Reference Michelin Technical Earthmover databook 2023. Internal comparison between Michelin XLDD2 35/65 R 33 and Michelin XTRA Power L5 35/65 R 33.

⁽²⁾ Reference Michelin Technical Earthmover databook 2023. Technical data for Michelin XTRA POWER L5 35/65 R 33.

LEARN MORE

ON THE WEB
pro.michelin.com

TESTIMONIALS
youtube.com

UPDATED NOVEMBER 2023

CONTACT

Please contact your local sales representative for more information.



MICHELIN XTRA POWER

TECHNICAL CHARACTERISTICS



DESCRIPTION	CAI [MSPN]	Max. dist./ hour km [mile]	TKPH [TMPH]	e mm [in]	D mm [in]	R' mm [in]	RC mm [in]	Tread depth mm [32rd]	Dual spacing mm [in]	Cap liter [gal]	Measuring recommended rim	Other approved rims <i>See end of document for more options</i>
875/65 R 29 221 A2 TL **	858995 14624	9 5.6 If load per tire <=21.2 t 7 4.3 If load per tire >21.2 t	-	873 34.4	1907 75.1	823 32.4	5662 222.9	92 115.9	-	1245 328.9	27.00/3.0	27.00/3.5 28.00/3.5

Bar	3	4	4.25	4.75	5	5.25	5.5	5.75	6	6.25
<i>Psi</i>	44	58	62	69	73	76	80	83	87	91

Machine - use kg - lbs	LOADER										
FRONT LADEN	13500 29768	18500 40793	19500 42998	21200 46746	21800 48069	23000 50715	23600 52038	24300 53582	25000 55125	25750 56779	
REAR LADEN	10800 23814	12600 27783	14400 31752	16960 37397	17850 39359	18750 41344	19650 43328	20500 45203	21400 47187	23000 50715	

35/65 R 33 229 A2 TL ***	169990 51910	10 6.2 If load per tire <=28 t 8 5 If load per tire >28 t	-	930 36.6	2058 81	905 36	6154 242	95 119.7	-	1403 370.7	28.00/3.5	-
---------------------------------	-----------------	--	---	-------------	------------	-----------	-------------	-------------	---	---------------	-----------	---

Bar	3	4	4.5	5	5.5	6	6.5	7	7.5	8
<i>Psi</i>	44	58	65	73	80	87	94	102	109	116

Machine - use kg - lbs	LOADER										
FRONT LADEN	16100 35501	19000 41895	21200 46746	23000 50715	24300 53582	25750 56779	28000 61740	30000 66150	31500 69458	32500 71663	
REAR LADEN	12900 28445	15200 33516	16950 37375	18400 40572	19450 42887	20600 45423	22400 49392	24000 52920	25200 55566	26000 57330	

LEARN MORE

ON THE WEB
pro.michelin.com

TESTIMONIALS
youtube.com

UPDATED DECEMBER 2023

TOOLS

BEYOND ROAD SELECTOR
beyond-road.selector.michelingroup.com/co

CONTACT

Please contact your local sales representative for more information.

