

# **MICHELIN**

## **XTRA DEFEND E4 L4**



**RADIAL  
TIRE**

***DESIGNED TO RESIST***

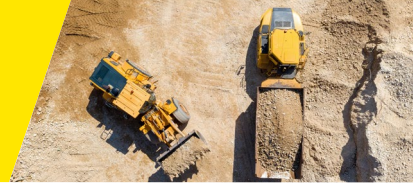


**CONSTRUCTION  
SEGMENT**



**MICHELIN**

# MICHELIN XTRA DEFEND E4 L4



## 1 PRODUCTIVITY

New \*\* load capacity<sup>(1)</sup> for high torque wheel-loader & ADT. Casing designed at \*\* load capacity 56 779 lbs / 25 750 kg <sup>(2)</sup> with increased protection and up to 14 km<sup>(3)</sup> in one hour at high temperature up to 47°C.

## 2 ROBUSTNESS

Reinforced crown and summit resistance to aggression. Up to 50%<sup>(4)</sup> of mass metal, thicker summit with up to 5 plies conception with specific aggression rubber resistance.

## 3 POLYVALENCE

Reinforced casing and summit conception for ADT/WHL applications. One product for 2 main machines: a stronger bead for high torque wheel-loader and reinforced crown and summit for ADT applications.

## TIRE CHARACTERISTICS



## ADDITIONAL INFORMATION

### APPLICABLE VEHICLES



MICHELIN XTRA DEFEND E4/L4 is designed, both for aggressive cycles on hard soil and mud conditions for ADT and aggressive surfaces during load and carry cycles for wheel loaders at high speed.

MICHELIN GROUP -  
Product Manager

<sup>(1)</sup> Except the 750/65 R 25, which is only L4\* load capacity. Reference MICHELIN Earthmover Databook 2024.

<sup>(2)</sup> Reference MICHELIN Earthmover Databook 2024 for the MICHELIN XTRA DEFEND E4\*\*/L4\*\* in 875/65 R29.

<sup>(3)</sup> Maximum distance in one hour for Wheel Loader (WHL)

<sup>(4)</sup> Internal comparison between the MICHELIN XLD D1 L4\* and the MICHELIN XTRA DEFEND E4\*\*/L4\*\*, same dimension 29.5 R 25, measurement certified by the MICHELIN Center of Technology, Ladoux, France.



ON THE WEB



SOCIAL MEDIA

### CONTACT

Please contact your local sales representative for more information.

UPDATED MAR 2024



# MICHELIN XTRA DEFEND E4 L4



pro.michelin.com

## TECHNICAL CHARACTERISTICS

Load capacity (kg & pound) based on inflation pressure (bar & psi) and speed (km/h & mph).

DESCRIPTION	CAI [MSPN]	Max.dist./ hour km [mile]	TKPH [TMPH]	Section width mm [in]	Outer diameter mm [in]	Static load radius mm [in]	Rolling circumference mm [in]	Tread depth mm [32rd]	Dual spacing mm [in]	Cap liter [gal]	Mesuring recommended rim	Other approved rims mm [in]
<b>23.5 R25 XTRA DEFEND E4**L4** 185B/195A2 TL</b>	723646 -	26 <sup>(1)</sup> / 14 <sup>(2)</sup> 16.2 <sup>(1)</sup> / 8.6 <sup>(2)</sup>	192 132	617 24.3	1618 63.7	728 28.7	4880 192.1	54 68	-	646 170.7	19.50/2.5	-
<b>Bar</b>	<b>2</b>	<b>2.5</b>	<b>3</b>	<b>3.5</b>	<b>3.75</b>	<b>4</b>	<b>4.5</b>	<b>5</b>	<b>5.5</b>			
<i>Psi</i>	29	36	44	51	54	58	65	73	80			
Machine - use kg - lbs <b>WHEEL LOADER</b>												
<b>FRONT LADEN</b>	8100 17861	9100 20066	10150 22381	11150 24586	11650 25688	12150 26791	13350 29437	13900 30650	14500 31973			
<b>REAR UNLADEN</b>	6500 14333	7300 16097	8100 17861	8900 19625	9300 20507	9700 21389	10700 23594	11160 24608	11600 25578			
<b>Bar</b>	<b>2</b>	<b>2.5</b>	<b>3</b>	<b>3.5</b>	<b>3.75</b>	<b>4</b>	<b>4.5</b>	<b>5</b>	<b>5.5</b>			
<i>Psi</i>	29	36	44	51	54	58	65	73	80			
Machine - use kg - lbs <b>ARTICULATED DUMP TRUCK</b>												
<b>ALL AXLES</b>	5650 12458	6380 14068	7100 15656	7800 17199	8175 18026	8550 18853	9250 20396	9950 21940	10350 22822			
<b>Bar</b>	<b>2</b>	<b>2.5</b>	<b>3</b>	<b>3.5</b>	<b>3.75</b>	<b>4</b>	<b>4.5</b>	<b>5</b>	<b>5.5</b>			
<i>Psi</i>	29	36	44	51	54	58	65	73	80			
Machine - use kg - lbs <b>GRADER</b>												
<b>ALL AXLES</b>	4850 10694	5250 11576	6000 13230	6750 14884	7130 15722	7500 16538	8200 18081					
<b>Bar</b>	<b>2</b>	<b>2.5</b>	<b>3</b>	<b>3.5</b>	<b>3.75</b>	<b>4</b>	<b>4.5</b>	<b>5</b>	<b>5.5</b>			
<i>Psi</i>	29	36	44	51	54	58	65	73	80			
<b>26.5 R25 XTRA DEFEND E4**L4** 193B/209A2 TL</b>	565274 76382	24 <sup>(1)</sup> / 14 <sup>(2)</sup> 14.9 <sup>(1)</sup> / 8.6 <sup>(2)</sup>	221 151	698 27.5	1740 68.5	775 30.5	5228 205.8	59.5 75	-	870 229.9	22.00/3.0	22.00/3.0 IF
<b>Bar</b>	<b>2</b>	<b>2.5</b>	<b>3</b>	<b>3.25</b>	<b>3.5</b>	<b>4</b>	<b>4.5</b>	<b>5</b>	<b>5.5</b>			
<i>Psi</i>	29	36	44	47	51	58	65	73	80			
Machine - use kg - lbs <b>WHEEL LOADER</b>												
<b>FRONT LADEN</b>	9300 20507	10300 22712	12150 26791	12875 28389	13600 29988	15000 33075	16150 35611	17350 38257	18500 40793			
<b>REAR UNLADEN</b>	7450 16427	8250 18191	9700 21389	10300 22712	10900 24035	12000 26460	12900 28445	13900 30650	14800 32634			
<b>Bar</b>	<b>2</b>	<b>2.5</b>	<b>3</b>	<b>3.25</b>	<b>3.5</b>	<b>4</b>	<b>4.5</b>	<b>5</b>	<b>5.5</b>			
<i>Psi</i>	29	36	44	47	51	58	65	73	80			
Machine - use kg - lbs <b>ARTICULATED DUMP TRUCK</b>												
<b>ALL AXLES</b>	6500 14333	7500 16538	8500 18743	9000 19845	9500 20948	10500 23153	11500 25358					
<b>Bar</b>	<b>2</b>	<b>2.5</b>	<b>3</b>	<b>3.25</b>	<b>3.5</b>	<b>4</b>	<b>4.5</b>	<b>5</b>	<b>5.5</b>			
<i>Psi</i>	29	36	44	47	51	58	65	73	80			
Machine - use kg - lbs <b>GRADER</b>												
<b>ALL AXLES</b>	5500 12128	6500 14333	7500 16538	8000 17640	8500 18743	9400 20727	10350 22822	11500 25358				

<sup>(1)</sup> Maximum distance in 1 hour for Articulated Dump Truck (ADT) <sup>(2)</sup> Maximum distance in 1 for Wheel Loader (WHL)

# MICHELIN XTRA DEFEND E4 L4



pro.michelin.com

## TECHNICAL CHARACTERISTICS

Load capacity (kg & pound) based on inflation pressure (bar & psi) and speed (km/h & mph).

DESCRIPTION	CAI [MSPN]	Max.dist./ hour km [mile]	TKPH [TMPH]	Section width mm [in]	Outer diameter mm [in]	Static load radius mm [in]	Rolling circumference mm [in]	Tread depth mm [32rd]	Dual spacing mm [in]	Cap liter [gal]	Mesuring recommended rim	Other approved rims mm [in]
<b>29.5 R25 XTRA DEFEND E4**L4** 200B/216A2 TL</b>	929747 -	22 <sup>(1)</sup> / 14 <sup>(2)</sup> 13.7 <sup>(1)</sup> / 8.6 <sup>(2)</sup>	246 169	777 30.6	1857 73.1	829 32.6	5585 219.9	65 81.9	-	1121 296.2	25.00/3.5	-
<b>Bar</b>	<b>2</b>	<b>2.5</b>		<b>3</b>		<b>3.5</b>	<b>4</b>		<b>4.5</b>		<b>5</b>	<b>5.5</b>
<i>Psi</i>	29	36		44		51	58		65		73	80
Machine - use kg - lbs <b>WHEEL LOADER</b>												
<b>FRONT LADEN</b>	11150 24586	12300 27122	14600 32193	16300 35942	18000 39690	19450 42887	20950 46195	22400 49392				
<b>REAR UNLADEN</b>	8900 19625	9850 21719	11700 25799	13050 28775	14400 31752	15550 34288	16750 36934	17900 39470				
<b>Bar</b>	<b>2</b>	<b>2.5</b>		<b>3</b>		<b>3.5</b>	<b>4</b>		<b>4.5</b>			
<i>Psi</i>	29	36		44		51	58		65			
Machine - use kg - lbs <b>ARTICULATED DUMP TRUCK</b>												
<b>ALL AXLES</b>	7800 17199	9050 19955	10300 22712	11500 25358	12750 28114	14000 30870						
<b>750/65 R25 XTRA DEFEND E4**L4* 190B/202A2 TL</b>	175955 13434	26 <sup>(1)</sup> / 14 <sup>(2)</sup> 16.2 <sup>(1)</sup> / 8.6 <sup>(2)</sup>	220 151	733 28.9	1628 64.1	720 28.3	4878 192	55 69.3	-	796 210.3	24.00/3.0	22.00/3.0 25.00/3.0
<b>Bar</b>	<b>2</b>	<b>2.5</b>		<b>3</b>		<b>3.25</b>	<b>3.5</b>		<b>4</b>		<b>4.5</b>	
<i>Psi</i>	29	36		44		47	51		58		65	
Machine - use kg - lbs <b>WHEEL LOADER</b>												
<b>FRONT LADEN</b>	8400 18522	9420 20771	11040 24343	11700 25799	12360 27254	13680 30164	15000 33075					
<b>REAR UNLADEN</b>	6725 14829	7775 17144	8825 19459	9365 20650	9000 19845	10950 24145	12000 26460					
<b>Bar</b>	<b>2</b>	<b>2.5</b>		<b>3</b>		<b>3.25</b>	<b>3.5</b>		<b>4</b>		<b>4.5</b>	
<i>Psi</i>	29	36		44		47	51		58		65	
Machine - use kg - lbs <b>ARTICULATED DUMP TRUCK</b>												
<b>ALL AXLES</b>	6250 13781	7350 16207	8400 18522	8950 19735	9500 20948	10600 23373						
<b>Bar</b>	<b>2</b>	<b>2.5</b>		<b>3</b>		<b>3.25</b>	<b>3.5</b>		<b>4</b>		<b>4.5</b>	
<i>Psi</i>	29	36		44		47	51		58		65	
Machine - use kg - lbs <b>GRADER</b>												
<b>ALL AXLES</b>	5500 12128	6500 14333	7500 16538	8000 17640	8500 18743	9400 20727	10500 23153					

<sup>(1)</sup> Maximum distance in 1 hour for Articulated Dump Truck (ADT) <sup>(2)</sup> Maximum distance in 1 for Wheel Loader (WHL)

# MICHELIN XTRA DEFEND E4 L4



pro.michelin.com

## TECHNICAL CHARACTERISTICS

Load capacity (kg & pound) based on inflation pressure (bar & psi) and speed (km/h & mph).

DESCRIPTION	CAI [MSPN]	Max.dist./ hour km [mile]	TKPH [TMPH]	Section width mm [in]	Outer diameter mm [in]	Static load radius mm [in]	Rolling circumference mm [in]	Tread depth mm [32rd]	Dual spacing mm [in]	Cap liter [gal]	Mesuring recommended rim	Other approved rims mm [in]
<b>775/65 R29 XTRA DEFEND E4**L4** 195B/213A2 TL</b>	002752 76326	24 <sup>(1)</sup> / 14 <sup>(2)</sup> 14.9 <sup>(1)</sup> / 8.6 <sup>(2)</sup>	233 160	769 30.3	1761 69.3	778 30.6	5276 207.7	54 68	-	962 254.2	24.00/3.0	24.00/3.5 25.00/3.5
<b>Bar</b>	<b>2</b>	<b>2.5</b>	<b>3</b>		<b>3.5</b>	<b>4</b>		<b>4.5</b>		<b>5</b>		<b>5.5</b>
<b>Psi</b>	29	36	44		51	58		65		73		80
Machine - use kg - lbs												
<b>WHEEL LOADER</b>												
FRONT LADEN	8900 19625	10500 23153	12100 26681	13800 30429	15400 33957	17000 37485	18600 41013	20000 44100				20600 45423
REAR UNLADEN	7100 15656	8500 18743	9700 21389	11200 24696	12300 27122	13600 29988	14900 32855	16200 35721				16480 36338
<b>Bar</b>	<b>2</b>		<b>2.5</b>		<b>3</b>		<b>3.5</b>					<b>4</b>
<b>Psi</b>	29		36		44		51					58
Machine - use kg - lbs												
<b>ARTICULATED DUMP TRUCK</b>												
ALL AXLES	7000 15435		8300 18302		9500 20948		10900 24035					12150 26791
<b>875/65 R 29 XTRA DEFEND E4**L4** 203B/221A2 TL</b>	206954 76031	22 <sup>(1)</sup> / 14 <sup>(2)</sup> 13.7 <sup>(1)</sup> / 8.6 <sup>(2)</sup>	273 187	872 34.3	1884 74.2	823 32.4	5620 221.3	59.5 75	-	1330 351.4	27.00/3.0	27.00/3.5 28.00/3.5
<b>Bar</b>	<b>2.5</b>	<b>3</b>	<b>3.5</b>	<b>4</b>	<b>4.5</b>	<b>4.75</b>	<b>5</b>			<b>5.5</b>	<b>6</b>	<b>6.25</b>
<b>Psi</b>	36	44	51	58	65	69	73			80	87	91
Machine - use kg - lbs												
<b>WHEEL LOADER</b>												
FRONT LADEN	13000 28665	15200 33516	17200 37926	18500 40793	20600 45423	21200 46746	21800 48069	23600 52038	25000 55125			25750 56779
REAR UNLADEN	10400 22932	12200 26901	13800 30429	14400 31752	16480 36338	16960 37397	17440 38455	18880 41630	20000 44100			20600 45423
<b>Bar</b>	<b>2.5</b>		<b>3</b>		<b>3.5</b>		<b>4</b>					<b>4.5</b>
<b>Psi</b>	36		44		51		58					65
Machine - use kg - lbs												
<b>ARTICULATED DUMP TRUCK</b>												
ALL AXLES	10600 23373		12250 27011		13800 30429		15500 34178					17100 37706

<sup>(1)</sup> Maximum distance in 1 hour for Articulated Dump Truck (ADT) <sup>(2)</sup> Maximum distance in 1 for Wheel Loader (WHL)