



LINE HAUL APPLICATIONS

# THE MICHELIN X<sup>®</sup> LINE ENERGY™ D+ TIRE

Michelin's most fuel efficient <sup>(1)</sup> dual Drive tire, the X<sup>®</sup> LINE ENERGY™ D+ features a casing designed to reach up to 1,5 million kilometers with up to 4 retreads.

| Line Haul | Regional | Urban | On/Off Road |
|-----------|----------|-------|-------------|
|-----------|----------|-------|-------------|

☒ Recommended ☐ Acceptable

DESIGNED TO DELIVER  
**MICHELIN**  
**1,5 MILLION**  
KILOMETERS CASING



22% lower in rolling resistance vs. the X Line Energy D tire <sup>(1)</sup>



Provides more than 10% better wet stopping traction than leading competitors <sup>(2)</sup>

(1) Calculated based on internal ISO28580 rolling resistance testing; 275/80R22.5 LRG X<sup>®</sup> Line Energy™ D+ vs. 275/80R22.5 LRG X<sup>®</sup> Line Energy™ D.

(2) Based on internal wet braking test at 60 mph (97 kph) on asphalt measuring peak Mu, using the Michelin X<sup>®</sup> Line Energy™ D+ tire, Bridgestone M713 Ecopia tire, Goodyear Fuel Max<sup>®</sup> LHD<sup>®</sup> 2, and Continental<sup>®</sup> HDL2+ tire. All tires were size 295/75R22.5. Actual on-road results may vary.

(3) Based on internal tests against SmartWay<sup>®</sup> requirements. For more information on SmartWay<sup>®</sup> verified technologies, go to US: [www.epa.gov/smartway](http://www.epa.gov/smartway) or CA: [www.nrcan.gc.ca](http://www.nrcan.gc.ca).

(4) 3PMSF (3 Peak Mountain Snow Flake) is from European R117 regulation. It has no regulatory Truck Tire reference in N.A. The tire must score at least 25% better in deep snow traction than the Standard Reference Test Tire on an ECE certified ISO test procedure. 3PMSF always appears with "M+S" mark.

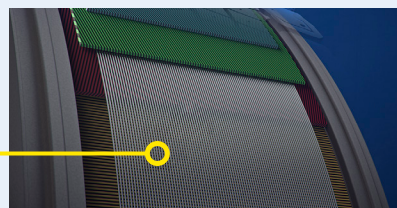


# THE MICHELIN X<sup>®</sup> LINE ENERGY<sup>™</sup> D+ TIRE

## Infini-Coil<sup>®</sup> Technology

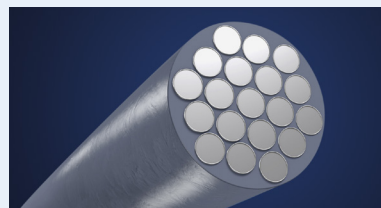
1/8 mile steel cable wound circumferentially around the belt package to provide casing protection, consistent footprint and long, even wear.

### Infini-Coil Technology



## PowerCoil Technology

Casing ply made with high tensile steel cables infused with rubber to resist damage due to oxidation and friction for excellent casing durability and maximum retreading.

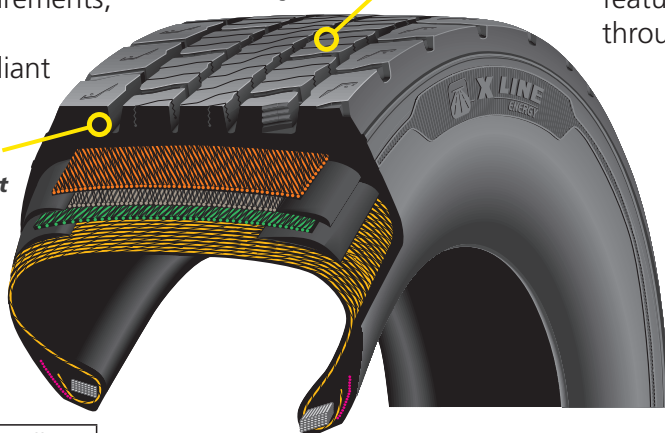


## FUEL SAVINGS

- Ultra-low rolling resistance<sup>(2)</sup>
- Meets SmartWay<sup>®</sup> <sup>(3)</sup> requirements, CARB compliant
- Greenhouse Gas 2 Compliant

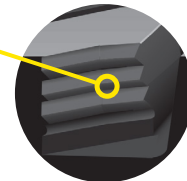
**Advanced Technology tread compound designed for fuel efficiency<sup>(1)</sup>**

**Regenerating features provide grip throughout tread life**



## LONG-LASTING TRACTION

- Interlocking siping and regenerating features provide biting edges throughout tread life



## RETREADABILITY

- Durable casing with high tensile strength steel belts supports repeated retreading



| Line Haul   | Regional   | Urban | On/Off Road |
|-------------|------------|-------|-------------|
| Recommended | Acceptable |       |             |

| Size        | Load Range | Catalog Number | Tread Depth | Max. Speed (*) |     | Loaded Radius |     | Overall Diameter |      | Overall Width (‡) |     | Approved Wheels (Measuring wheel listed first.) | Min. Dual Spacing (‡) |     | Revs Per Mile | Max. Load and Pressure Single |     |      |     | Max. Load and Pressure Dual |     |      |     |
|-------------|------------|----------------|-------------|----------------|-----|---------------|-----|------------------|------|-------------------|-----|---|-----------------------|-----|---------------|-------------------------------|-----|------|-----|-----------------------------|-----|------|-----|
|             |            |                | 32nds       | mph            | kph | in.           | mm  | in.              | mm   | in.               | mm  |   | in                    | mm  |               | lbs.                          | psi | kg.  | kPa | lbs.                        | psi | kg.  | kPa |
| 11R22.5     | G          | 51317          | 20          | 75             | 120 | 19.4          | 494 | 41.5             | 1054 | 11.4              | 289 | 8.25, 7.50                                      | 11.8                  | 300 | 498           | 6175                          | 105 | 2800 | 720 | 5840                        | 105 | 2650 | 720 |
| 295/75R22.5 | G          | 54926          | 20          | 75             | 120 | 18.8          | 478 | 40.3             | 1023 | 11.1              | 283 | 8.25, 9.00                                      | 12.2                  | 311 | 514           | 6175                          | 110 | 2800 | 760 | 5675                        | 110 | 2575 | 760 |

Note: Wheel listed first is the measuring wheel.

(\*) Exceeding the lawful speed limit is neither recommended nor endorsed.

(‡) Overall width will change 0.1 inch (2.5 mm) for each 1/4 inch change in wheel width. Minimum dual spacing should be adjusted accordingly.

(1) Based on industry standard rolling resistance testing of comparable tires or retreads. Actual results may vary, and may be impacted by many factors, to include road conditions, weather and environment, driver performance, etc.

(2) Based on internal ISO 28580 rolling resistance testing using size 275/80R22.5 LRG.

(3) Based on internal tests against SmartWay<sup>®</sup> requirements. For more information on SmartWay<sup>®</sup> verified technologies, go to US: [www.epa.gov/smartway](http://www.epa.gov/smartway) or CA: <https://www.nrcan.gc.ca>.

(4) 3PMSF (3 Peak Mountain Snow Flake) is from European R117 regulation. It has no regulatory Truck Tire reference in N.A. The tire must score at least 25% better in deep snow traction than the Standard Reference Test Tire on an ECE certified ISO test procedure. 3PMSF always appears with "M+S" mark.

Michelin tires and tubes are subject to a continuous development program. Michelin North America, Inc. reserves the right to change product specifications at any time without notice or obligations.

MNA, Inc. continually updates its product information to reflect any changes in Industry Standards. Printed material may not reflect the current Load and Inflation information.

Please visit [business.michelinman.com](http://business.michelinman.com) for the latest product information. The actual load and inflation pressure used must not exceed the wheel manufacturer's maximum conditions.

Never exceed a wheel manufacturer's limits without permission from the component manufacturer.

**275/80R22.5 X Line Energy D+ was replaced by the 295/75R22.5 in 2024 -tire sizes considered equivalent.**

| Size        | Load Range | Catalog Number | Tread Depth | Max. Speed (*) |     | Loaded Radius |     | Overall Diameter |      | Overall Width (‡) |     | Approved Wheels (Measuring wheel listed first.) | Min. Dual Spacing (‡) |     | Revs Per Mile | Max. Load and Pressure Single |     |      |     | Max. Load and Pressure Dual |     |      |     |
|-------------|------------|----------------|-------------|----------------|-----|---------------|-----|------------------|------|-------------------|-----|---|-----------------------|-----|---------------|-------------------------------|-----|------|-----|-----------------------------|-----|------|-----|
|             |            |                | 32nds       | mph            | kph | in.           | mm  | in.              | mm   | in.               | mm  |   | in                    | mm  |               | lbs.                          | psi | kg.  | kPa | lbs.                        | psi | kg.  | kPa |
| 275/80R22.5 | G          | 10873          | 20          | 75             | 120 | 18.8          | 478 | 40.3             | 1023 | 11.1              | 283 | 8.25, 7.50                                      | 12.2                  | 311 | 514           | 6175                          | 110 | 2800 | 760 | 5675                        | 110 | 2575 | 760 |

TO FIND OUT MORE  
US: [business.michelinman.com](http://business.michelinman.com)  
CA: [business.michelin.ca](http://business.michelin.ca)

FIND US ON FACEBOOK  
[michelintruck](https://www.facebook.com/michelintruck)

VISIT US ON THE WEB  
US: [business.michelinman.com/contact-us](http://business.michelinman.com/contact-us)  
CA: [business.michelin.ca/contact-us](http://business.michelin.ca/contact-us)

CONTACT US BY TELEPHONE  
US: 1-888-622-2306  
CA: 1-888-622-2306

Michelin North America Inc., One Parkway South, Greenville, SC 29615

Michelin North America (Canada) Inc., 2500 Daniel Johnson Blvd., Suite 500, Laval (QC) H7T 2P6

Copyright © 2025 MNA(C)I. All rights reserved.

Copyright © 2025 Michelin North America, Inc. All rights reserved. An Equal Opportunity Employer PDF Only (05/25)