

MICHELIN AGILIS CROSSCLIMATE 2 TIRE



ROBUST & DURABLE: PROFESSIONAL-GRADE CONSTRUCTION, RELIABILITY YOUR FLEET NEEDS.

The Michelin Agilis CrossClimate 2 tire is designed with **50% more sidewall rubber** than leading competitors to help protect against curb damage—giving your fleet the durability and reliability it needs to stay on schedule and on budget.¹

OPTIMIZE UPTIME WITH LONGEVITY: MAXIMIZE FLEET UPTIME AND CONTROL COSTS WITH IMPROVED TREAD LIFE UNDER HEAVY LOADS.

The Michelin Agilis CrossClimate 2 tire delivers **35% more mileage** than a leading competitor.²

YEAR ROUND CONFIDENCE WITH 3PMSF MARKING AND EXCELLENT WET TRACTION.

The Michelin Agilis CrossClimate 2 tire provides **35% better snow traction** than a leading competitor.³



- (1) Based on measurements of the sidewall material thickness between the casing ply and the exterior face of the tire for the Michelin Agilis CrossClimate 2, Firestone® Transforce HT2 and Goodyear® Wrangler Workhorse HT tires all LT225/75R16 size.
- (2) Based on an internal treadwear test using tires in size LT225/75R16 on 2023 Ram Promaster vans loaded to 6,800lbs / 3,100kg, Michelin Agilis CrossClimate 2 tire versus the Firestone® Transforce HT3 tire. Actual on-road results may vary.
- (3) Based on third-party snow traction test using ASTM Test Method F1805 on LT225/75R16 tire size versus the Goodyear® Wrangler Workhorse HT tire. Actual on-road results may vary.
- (4) 60-Day Satisfaction Guarantee – If you're not 100% satisfied with your new tires, just bring the tires and original sales receipt back to the place where you bought the tires within 60 days of your purchase, and we will gladly exchange them for a new set of tires of equal or lesser value. Certain conditions and limitations apply. See the Michelin Owner's Manual for complete description and details.
- (5) 20% More Mileage Satisfaction Guarantee – If the Michelin Agilis products do not provide 20% more mileage performance than your current light truck or medium-duty truck tires, we'll make up the difference of your acquisition price per tire. Valid only for the Michelin Agilis products. Guarantee requires proper tire maintenance and does not cover road hazards. Applicable to a maximum of 50 tires per ship-to location/customer. Valid for on-road commercial applications only. (1) Valid only against competitor tire brands. (2) Proof of purchase with date and purchase price necessary as well as mount and dismount tire mileage records for the mileage guarantee. Guarantee will pay in the form of a credit for the difference of your acquisition price per tire. Credit will be issued and all documentation must be validated by a Michelin Sales Representative. Michelin reserves the right to modify or discontinue this program at any time for any reason without prior notice. See your local Michelin dealer or sales representative for more details.



MICHELIN

MICHELIN AGILIS CROSSCLIMATE 2 TIRE



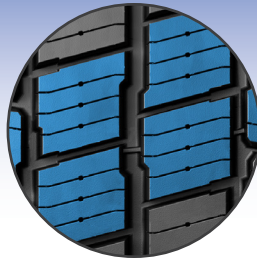
COMMERCIAL LIGHT TRUCK
& URBAN APPLICATIONS

BUILT TO LAST DURABILITY THAT DELIVERS



Urban routes are tough on tires. That's why the Michelin Agilis CrossClimate 2 tire features CurbGard™ sidewall protectors—reinforced bands designed to stand up to curb scrubbing, tight turns, and daily stop-and-go abuse. Help keep your fleet rolling, not sidelined.

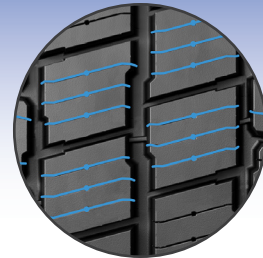
DRIVE FOR MILES LONGEVITY FOR LOWER COSTS



Reduce changeouts and extend service life. With StabiliBlok™ tread technology and MaxPressure Profile design, this tire delivers longer tread life and better wear than the predecessor⁽¹⁾—even under high loads and high torque. That means more value per tire and more uptime for your business.

(1) The Michelin Agilis CrossClimate 2 tire delivers up to 40% more mileage than its predecessor. Based on an internal treadwear test using tires in size LT225/75R16 on 2023 Ram Promaster vans versus the Michelin Agilis CrossClimate tire. Actual on-road results may vary.

CONFIDENCE IN ANY CONDITION ALL-SEASON TRACTION



From scorching pavement to slushy streets, SipeLock™ technology packs in hundreds of biting edges for grip in wet and snowy conditions—without sacrificing durability or tread life. Your fleet gets year-round traction and performance you can count on.

Line Haul	Regional	Urban	On/Off Road
Recommended	Acceptable		



Meets the USTMA (U.S. Tire Manufacturers Association) snow traction performance requirements. Meets the Tire and Rubber Association of Canada (TRAC) requirements for severe snow traction.

Launch Date	Size Load/Speed Rating	Load Range	Catalog Number	Tread Depth 32nds	Max Speed*		Overall Diameter (±)		Overall Width		Approved Wheels Measuring wheel listed first.	Min. Dual Spacing (±)		Revs Per Mile (at 45 mph)	Max. Load and Pressure Single				Max. Load and Pressure Dual			
					mph	km/h	in	mm	in.	mm		in	mm		lbs.	psi	kg.	kPa	lbs.	psi	kg.	kPa
10/1/25	195/75R16C 107/105R	D	68007	14	106	170	27.5	699	7.7	195.58	5.5 (5 - 6)	8.7	220	757	2150	69	975	475	2040	69	925	475
10/1/25	225/75R16C 121/120R	E	64665	14	106	170	29.3	744	8.8	223.52	6 (6 - 7)	10.1	256	710	3195	83	1450	575	3085	83	1400	575
10/1/25	235/65R16C 121/119R	E	27332	14	106	170	28.0	711	9.4	238.76	7 (6.5 - 7.5)	10.6	742	742	3195	83	1450	575	3000	83	1360	575
6/1/25	LT215/85R16/E 115/112R	E	78388	14	106	170	30.4	772	8.5	215.9	6 (5.5 - 7)	9.9	251	684	2680	80	1215	550	2470	80	1120	550
6/1/25	LT225/75R16/E 115/112R	E	84328	14	106	170	29.3	744	8.8	223.52	6 (6 - 7.5)	10.2	259	710	2680	90	1215	620	2470	90	1120	620
6/1/25	LT235/80R17/E 120/117R	E	66206	14	106	170	31.8	808	9.2	233.68	6.5 (6 - 8)	10.7	273	654	3085	80	1400	550	2835	80	1285	550
10/1/25	LT235/80R18/E 121/118R	E	41778	14	106	170	32.8	833	9.2	233.68	6.5 (6 - 8)	10.7	273	634	3195	80	1450	575	2910	80	1320	550
6/1/25	LT235/85R16/E 120/116R	E	83464	14	106	170	31.7	805	9.2	233.68	6.5 (6 - 7.5)	10.7	273	656	3085	80	1380	550	2755	80	1260	550
6/1/25	LT245/70R17/E 119/116R	E	49510	14	106	170	30.6	777	9.8	248.92	7 (6.5 - 8)	11.3	288	681	3000	80	1360	550	2755	80	1250	550
6/1/25	LT245/75R16/E 120/116R	E	36935	14	106	170	30.5	775	9.8	248.92	7 (6.5 - 8)	11.3	288	683	3085	80	1400	550	2755	80	1250	550
6/1/25	LT245/75R17/E 121/118R	E	84422	14	106	170	31.5	800	9.8	248.92	7 (6.5 - 8)	11.3	288	660	3195	80	1450	550	2910	80	1320	550
10/1/25	LT265/60R20/E 121/118R	E	63991	14	106	170	32.5	826	10.7	271.78	8 (8 - 9.5)	12.2	310	640	3195	80	1450	550	2910	80	1320	550
6/1/25	LT265/70R17/E 123/120R	E	18478	14	106	170	31.7	805	10.7	271.78	8 (7 - 9)	12.2	310	657	3415	80	1550	550	3085	80	1400	550
6/1/25	LT265/70R18/E 124/121R	E	90178	14	106	170	32.6	828	10.7	271.78	8 (7 - 9)	12.2	310	637	3525	80	1600	550	3195	80	1450	550
10/1/25	LT275/65R18/E 123/120R	E	74670	14	106	170	32.1	815	11	279.4	8 (8 - 9.5)	12.8	324	648	3415	80	1550	550	3085	80	1400	550
10/1/25	LT275/65R20/E 126/123R	E	83850	14	106	170	34.1	866	11	279.4	8 (8 - 9.5)	12.8	324	610	3750	80	1700	550	3415	80	1550	550
6/1/25	LT275/70R18/E 125/122R	E	97248	14	106	170	33.2	843	11	279.4	8 (7 - 9)	12.8	324	627	3640	80	1650	550	3305	80	1500	550
10/1/25	LT285/60R20/E 125/122R	E	74106	14	106	170	33.5	851	11.5	292.1	8.5 (8.5 - 10)	13.3	339	622	3640	80	1650	550	3305	80	1500	550

(*) Exceeding the lawful speed limit is neither recommended nor endorsed.

(±) Overall width will change 0.1 inch (2.5 mm) for each 1/4 inch change in wheel width. Minimum dual spacing should be adjusted accordingly. MICHELIN® tires and tubes are subject to a continuous development program. Michelin North America, Inc. (MNA) reserves the right to change product specifications at any time without notice or obligations. MNA continually updates its product information to reflect any changes in Industry Standards. Printed material may not reflect the current Load and Inflation information. Please visit www.michelintruck.com for the latest product information. The actual load and inflation pressure used must not exceed the wheel manufacturer's maximum conditions. Never exceed a wheel manufacturer's limits without permission from the component manufacturer.

TO FIND OUT MORE
US: business.michelinman.com
CA: business.michelin.ca

FIND US ON FACEBOOK
[michelintruck](https://www.facebook.com/michelintruck)

@ CONTACT US ON THE WEB
US: business.michelinman.com/contact-us
CA: business.michelin.ca/contact-us

CONTACT US BY TELEPHONE
US: 1-888-622-2306
CA: 1-888-622-2306

Michelin North America Inc., One Parkway South, Greenville, SC 29615
Michelin North America (Canada) Inc., 2500 Daniel Johnson Blvd., Suite 500, Laval (QC) H7T 2P6
Copyright © 2025 MNA(C)I. All rights reserved.
Copyright © 2025 Michelin North America, Inc. All rights reserved. PDF Only (06/25)