

IT'S MORE THAN A TYRE

**BOOST YOUR ENERGY
TRANSITION WITHOUT
TRADING OFF RELIABILITY**



**I CHOOSE MICHELIN
X[®] WORKS 2**



MICHELIN
X[®] Works Z2
315/80 R 22.5

MICHELIN
X[®] Works D2
315/80 R 22.5

**Thanks to the new MICHELIN
X[®] WORKS 2 range**



Optimise your Total Cost of Ownership⁽¹⁾



Reduce your carbon emissions

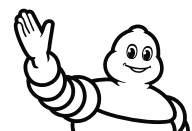


FOR STEER AND DRIVE AXLES



MICHELIN X[®] WORKS 2 proudly wins the I-INNOVATION AWARD GOLD in the Equipment Manufacturer category at SOLUTRANS 2025 — a true recognition of innovation and performance.

(1) TCO means tyre impact on indirect costs: fuel savings, maintenance, productivity and tolls in some countries.
(2) 3PMSF: Tyre for use in severe snow conditions.
(3) Retreadable with MICHELIN ◊ REMIX





MICHELIN X[®] Works Z2 & D2



COST CONTROL **IMPROVED TCO**

Save up to **€960 per year** versus average competitors⁽¹⁾, thanks to an optimized combination:

- Energy efficiency: the 1st on-/off-road offer on the market with B label Rolling Resistance on the steer position. **Fuel savings of up to 0.6 L/100 km** versus average competitors⁽¹⁾
- Longevity: **up to 10% increased mileage** versus the MICHELIN X[®] Works Z tyre⁽²⁾ and **up to 25% increased mileage** versus the MICHELIN X[®] Works D tyre⁽²⁾
- Even wear



SAFETY & QUALITY **EXCELLENT MOBILITY**

- 3PMSF marking
- Long-lasting grip and traction

PREMIUM ROBUSTNESS

- Strong casing endurance, reinforced by MICHELIN POWERCOIL technology
- Introducing new sidewall shields
- High retreadability



ECO-TRANSITION **REDUCED CO₂ EMISSIONS**

Save up to **0.8 T of CO₂ per year** versus average competitors⁽¹⁾

EV-COMPATIBLE

Load index improved by 2 points at 158/150 for both front and drive axles versus previous generation

MICHELIN TECHNOLOGIES



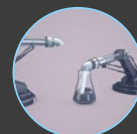
POWERCOIL



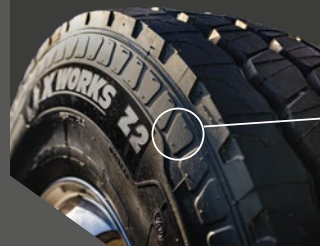
DURACOIL



OPTICOIL



CARBION



NEW SIDEWALL SHIELDS for reinforced casing protection!

See more



TECHNICAL INFORMATION

EUROPEAN LABELLING

TREAD PATTERN AND DIMENSION	TYPE	LOAD/SPEED INDEX	MICHELIN PREFERRED RIM	ORIGINAL TREAD DEPTH	SPECIAL MARKINGS	RADIO FREQUENCY IDENTIFICATION CHIP INTEGRATED	(a)	(b)	(c)	
315/80 R 22.5 MICHELIN X [®] Works Z2	TL	158/150 K	9.00	15.6 mm	(d) M+S Traction		B	B	A	71 dB
315/80 R 22.5 MICHELIN X [®] Works D2	TL	158/150 K	9.00	21.3 mm	(d) M+S Traction		C	B	B	75 dB

(a) Fuel efficiency class (from A to E). (b) Wet grip class (from A to E). (c) External rolling noise class (from A to C) and measured value in decibels (dB). (d) 3PMSF: Tyre for use in severe snow conditions.

REGROOVING INFORMATION

TREAD PATTERN AND DIMENSION	THEORETICAL REGROOVING DEPTH	APPROXIMATE REGROOVING WIDTH	SUGGESTED BLADE
315/80 R 22.5 MICHELIN X [®] Works Z2	H = 3 mm	8 to 10 mm	R4
315/80 R 22.5 MICHELIN X [®] Works D2	H = 3 mm	8 to 10 mm	R4



Retreadable with **MICHELIN** **REMIX**

(1) Fuel savings, CO₂ emissions & TCO based on VECTO tool calculation (TCO₂ tool). Hypothesis: TCO calculation: tyre + maintenance + energy costs, by year. Configuration: 8x4 Rigid, 24t. Load: fully loaded. Usage: 50% regional, 50% construction. Km: 50,000km driven per year. Truck consumption: 42L/100km. Energy cost: 1.3€/L. Number of vehicles: 1 truck. RR decreased at 70% at the end of 1st life. Competitors: Bridgestone MSteer & drive 001, Continental Crosstrack HS3 & HD3, Goodyear Omnitrac S & D, Hankook Smartwork AM11 & DM11. Actual results may vary in real life conditions depending on road and/or weather conditions.

(2) Expected mileage performance based on Michelin technical expertise. Actual results may vary in real life conditions depending on road and/or weather conditions.

MICHELIN products are manufactured from high quality materials to high tolerances, ensuring a uniform and consistent performance. Correct application, fitting, inflation and regular inspection of the product are essential to its safe and efficient operation. REMIX[®] and the tyre designations mentioned are trademarks of Michelin. For further information about any of the products in this document, contact your local Michelin representative.



WEBSITE
pro.michelin.com



LINKEDIN
Michelin For Professional Businesses



MY PORTAL
myportal.michelingroup.com



YOUTUBE
Michelin Truck & Bus Tyres Europe



Information correct at date of publication – 04/2025 – All Contents AURA R.C.S. 495 289 399 – 25040091 – Photo credits: Michelin, Mouton Noir, Shutterstock
M.F.P. Michelin R.C.S. 855 200 507 Clermont-Fd – Share capital: 504 000 004 €



MICHELIN