

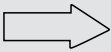


REGIONAL & URBAN APPLICATIONS

THE MICHELIN X[®] MULTI Z2 TIRE

Regional all-position tire that provides exceptional mileage and strong, consistent traction in wet and snowy conditions.

Line Haul	Regional	Urban	On/Off Road
<input checked="" type="checkbox"/>	<input checked="" type="checkbox"/>	<input checked="" type="checkbox"/>	<input checked="" type="checkbox"/>
Recommended	Recommended	Recommended	Recommended



DIRECTIONAL TIRE
(For Full Life)



(1)



(2)



Delivers 20% more mileage than the XZE2 tire ⁽³⁾

Delivers 17% better rolling resistance than the XZE2 tire ⁽⁴⁾

(1) Based on internal tests against SmartWay[®] requirements. For more information on SmartWay[®] verified technologies, go to US: www.epa.gov/smartway or CA: <http://www.nrcan.gc.ca>.

(2) 3PMSF (3 Peak Mountain Snow Flake) is from European R117 regulation. It has no regulatory Truck Tire reference in N.A. The tire must score at least 25% better in deep snow traction than the Standard Reference Test Tire on an ECE certified ISO test procedure. 3PMSF always appears with "M+S" mark.

(3) Based on an internal study of 8 fleets in regional and super regional usage at tire removal, 139 total tires, based on a 6/32" max. pull point, Michelin X[®] Multi Z2 tire vs. Michelin XZE2 tire, both in 11R22.5 LRH. Actual on-road results may vary.

(4) Based on ISO28580 rolling resistance test results; 295/75R22.5 LRG Michelin X[®] Multi Z2 tire vs. 275/80R22.5 Michelin XZE2 tire (equivalent sizes).

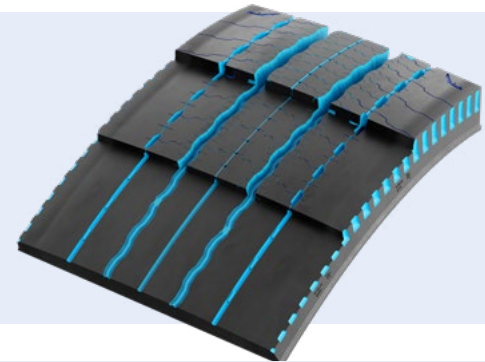


THE MICHELIN X[®] MULTI Z2 TIRE

Combining Regenion technology with a scrub and tear resistant compound specifically designed for regional and urban applications, with a re-designed sidewall, results in a tire that provides excellent mileage and fuel economy.

Regenion Technology

- Evolving tread design allows for efficient use of rubber maximizing the wear life of the tire
- As the tire wears the grooves open up providing lasting traction and control in all-weather conditions



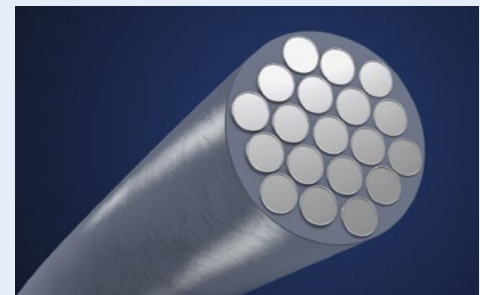
Robust Sidewall

- Curb Guards help protect the sidewalls from curb scrub and impacts
- New sidewall shape designed to improve fuel economy



PowerCoil Technology

Casing ply made with high tensile steel cables infused with rubber to resist damage due to oxidation and friction for excellent casing durability and maximum retreading.



Size	Load Range	Catalog Number	Tread Depth			Max. Speed (+)		Loaded Radius		Overall Diameter		Overall Width (‡)		Approved Wheels (Measuring wheel listed first.)	Min. Dual Spacing (‡)		Revs Per Mile	Max. Load and Pressure Single				Max. Load and Pressure Dual			
			32nds	mph	kph	in.	mm	in.	mm	in.	mm	in	mm		lbs.	psi		kg.	kPa	lbs.	psi	kg.	kPa		
11R22.5	G	64542	22	75	120	19.4	492	41.4	1051	11.2	285	8.25, 7.50	12.5	318	500	6175	105	2800	720	5840	105	2650	720		
11R22.5	H	02285	22	75	120	19.4	493	41.4	1051	11.2	285	8.25, 7.50	12.5	318	499	6610	120	3000	830	6005	120	2725	830		
295/75R22.5	G	80064	22	75	120	18.8	478	40.2	1020	11.1	281	8.25, 9.00	13.2	335	515	6175	110	2800	760	5675	110	2575	760		
295/75R22.5	H	48428	22	75	120	18.7	476	40.2	1021	11.1	282	8.25, 9.00	13.2	335	516	7160	123	3250	850	6610	123	3000	850		

Note: Wheel listed first is the measuring wheel.

(*) Exceeding the lawful speed limit is neither recommended nor endorsed.

(‡) Overall widths will change 0.1 inch (2.5 mm) for each 1/4 inch change in wheel width. Minimum dual spacing should be adjusted accordingly.

Michelin tires and tubes are subject to a continuous development program. Michelin North America, Inc. reserves the right to change product specifications at any time without notice or obligations.

Please consult wheel manufacturer's load and inflation limits. Never exceed wheel manufacturer's limits without permission of component manufacturer.



TO FIND OUT MORE

US: business.michelinman.com
CA: business.michelin.ca



FIND US ON FACEBOOK

[michelintruck](https://www.facebook.com/michelintruck)



CONTACT US ON THE WEB

US: business.michelinman.com/contact-us
CA: business.michelin.ca/contact-us



CONTACT US BY TELEPHONE

US: **1-888-622-2306**
CA: **1-888-622-2306**