

# RACECARD

2018 BMW I BERLIN E-PRIX



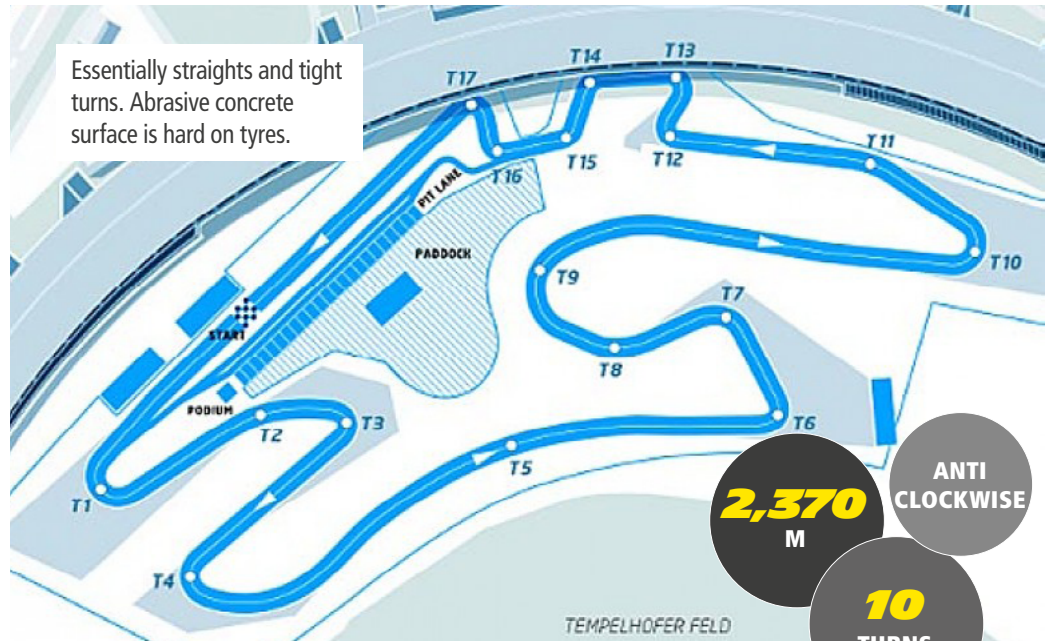
**SATURDAY  
MAY 19  
2018**

BMW I BERLIN E-PRIX  
**ROUND 9:**  
2017/2018 ABB  
FIA FORMULA-E  
CHAMPIONSHIP

BERLIN  
GERMANY



## THE CIRCUIT BERLIN-TEMPELHOF



### THE 2017 BERLIN E-PRIX

**WINNER:**

Race 1: Felix Rosenqvist  
(Mahindra Racing/Michelin)  
Race 2: Sébastien Buemi  
(Renault e.dams/Michelin),

**POLE POSITION:**

Race 1: Lucas di Grassi  
(Audi Sport Abt Schaeffler/Michelin),  
1m8.312s  
Race 2: Felix Rosenqvist  
(Mahindra Racing/Michelin),  
1m8.208s

**FASTEST RACE LAP:**

Race 1: Mitch Evans  
(Jaguar Racing), 1m10.224s  
Race 2: Maro Engel  
(Venturi), 1m9.509s

Felix Rosenqvist's first Formula E  
victory.  
Rosenqvist was first over the line  
in Race 2 but was subsequently  
penalised, handing the win to Buemi.



### THE 2018 BERLIN E-PRIX

4th running  
1 race (45laps)



### TIMETABLE

SATURDAY, MAY 19

9:00am	45 min.	Free Practice 1
11:30am	30 min.	Free Practice 2
2:00pm		Qualifying
2:45pm		SuperPole
4:00pm		Jaguar I-PACE eTROPHY presentation
4:10pm		FIA Formula E Gen2 Car presentation by Nico Rosberg
6:03pm		Race (45 laps)
7:00pm		Podium ceremony



## MICHELIN AND THE 2018 BERLIN E-PRIX

- » Michelin tyres: MICHELIN Pilot Sport EV2 (Front: 245/40x18 / Rear: 305/40x18)
- » Allocation: five front tyres and five rear tyres

## THE BERLIN E-PRIX

- » Berlin has hosted a Formula E race every season since the inaugural championship in 2014/2015
- » The 2016 F1 world champion Nico Rosberg will drive a Gen2 Formula E car around Tempelhof
- » The new Jaguar I-PACE eTROPHY will be presented officially in Berlin
- » In 2017, electric vehicle sales increased by 108% in Germany (58,281 units)
- » By the end of the year, Germany could become the world's third biggest electric vehicle market after China and the USA

## BERLIN'S TEMPELHOF

- » The former Berlin-Tempelhof (THF) airport closed 10 years ago
- » Its hangars form the world's third-biggest building after the USA's Pentagon and Romania's presidential palace
- » Today, Tempelhof is a vast public park and leisure facility
- » The Brandenburg Gate is a symbol of Berlin, but Fernsehturm Tower, the Gendarmenmarkt and Kurfürstendamm are also big tourist attractions
- » More than 11 million tourists visit Berlin yearly
- » In 2019, Berlin will celebrate the 30th anniversary of the Wall's fall



**"SEVERAL STRAIGHTS AND A COMBINATION OF TIGHT AND FAST CORNERS"**

## SERGE GRISIN

Manager of Michelin Motorsport's Formula E programme

"Like last year, the circuit visits the aprons of the former Tempelhof airport, although the exact layout is different to that seen in Season 1. The new configuration has met with widespread praise, with 10 turns instead of 17, several straights and a combination of tight and fast corners. There is also a portion through a 'tunnel' which passes beneath spectators watching the race from the eMotion Club. The concrete-based surface is very hard-wearing, especially early in the day when the cars first go out, but the PSEV2 has already demonstrated its ability to cope with this sort of challenge at track temperatures in excess of 40°C."

## MICHELIN AND THE 2018 BERLIN E-PRIX

### TECHNICAL DATA

**PILOT SPORT EV2**  
FRONT: 245/40X18 &  
REAR: 305/40X18



Developed specifically for the FIA Formula E Championship  
The first 18-inch single-seater racing tyre

The first single-seater racing tyre capable of competing in dry and wet conditions

The first tyre capable of lasting an entire race meeting

<b>Size (front/rear)</b>	24/64-18 / 27/68-18
<b>Width (front/rear)</b>	245mm / 305mm
<b>Tread width (front/rear)</b>	240mm / 270mm
<b>Side wall height (front/rear)</b>	98mm / 122mm (i.e. 40 percent of tyre width)
<b>Rim diameter</b>	18 inches
<b>Weight (front/rear)</b>	8.8kg / 10.9kg
<b>Type of tread pattern</b>	Asymmetric, non-directional
<b>Usage</b>	Circuits, street circuits, asphalt, concrete, wet or dry weather
<b>Number of tyres taken to each race</b>	200 (160 new tyres + 40 from the previous race)
<b>Weight saving (compared with the MICHELIN Pilot Sport EV)</b>	1.1kg front 1.4kg rear
<b>Weight saving per set of four tyres</b>	5kg (11 percent)
<b>Rolling resistance</b>	Lowered by 16 percent (equivalent to more than 2km, or one lap)



# 2018 BERLIN E-PRIX

## ENTRY LIST

### AUDI SPORT ABT SCHAEFFLER



**LUCAS di Grassi** (BRA)

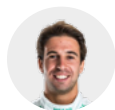
Wins: 6  
Podium: 24  
Pole position: 3



**Daniel Abt** (DEU)

Wins: 1  
Podium: 5  
Pole position: 1

### MS + ANDRETTI FORMULA E



**Antonio Felix Da Costa** (PRT)

Wins: 1  
Podium: 1  
Pole position: 0



**Stéphane Sarrazin** (FRA)

Wins: 0  
Podium: 3  
Pole position: 0

### DS VIRGIN RACING



**Sam Bird** (GBR)

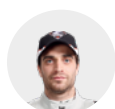
Wins: 7  
Podium: 14  
Pole position: 4



**Alex Lynn** (GBR)

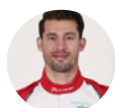
Wins: 0  
Podium: 0  
Pole position: 1

### DRAGON



**Jérôme d'Ambrosio** (BEL)

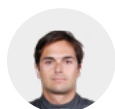
Wins: 2  
Podium: 6  
Pole position: 2



**José María López** (ARG)

Wins: 0  
Podium: 2  
Pole position: 0

### PANASONIC JAGUAR RACING



**Nelson Piquet Jr** (BRA)

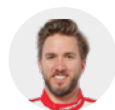
Wins: 2  
Podium: 5  
Pole position: 1



**Mitch Evans** (NZL)

Wins: 0  
Podium: 1  
Pole position: 0

### MAHINDRA RACING



**Nick Heidfeld** (DEU)

Wins: 0  
Podium: 8  
Pole position: 0



**Felix Rosenqvist** (SWE)

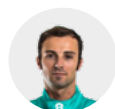
Wins: 3  
Podium: 7  
Pole position: 6

### NIO FORMULA E TEAM



**Oliver Turvey** (GBR)

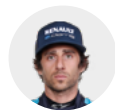
Wins: 0  
Podium: 1  
Pole position: 1



**Luca Filippi** (ITA)

Wins: 0  
Podium: 0  
Pole position: 0

### RENAULT E.DAMS



**Nicolas Prost** (FRA)

Wins: 3  
Podium: 5  
Pole position: 3



**Sébastien Buemi** (CHE)

Wins: 12  
Podium: 20  
Pole position: 9

### TECHEETAH



**Jean-Eric Vergne** (FRA)

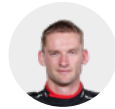
Wins: 4  
Podium: 12  
Pole position: 8



**André Lotterer** (DEU)

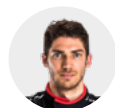
Wins: 0  
Podium: 2  
Pole position: 0

### VENTURI FORMULA E



**Maro Engel** (DEU)

Wins: 0  
Podium: 1  
Pole position: 0



**Edoardo Mortara** (CHE)

Wins: 0  
Podium: 1  
Pole position: 0





# FIA FORMULA E

## DRIVERS STANDING

DRIVERS															TOT.
		HK	HK	MA	CL	MX	UR	IT	FR	DE	DE	CH	US	US	
1	<b>VERGNE J. (FRA)</b> TECHEETAH SPARK-RENAULT - RENAULT Z.E 16		21	12	10	28	10	28	10	28					147
2	<b>BIRD S. (GBR)</b> DS VIRGIN RACING SPARK-CITROËN - VIRGIN DSV-02		25	10	15	11	0	15	25	15					116
3	<b>ROSENQVIST F. (SWE)</b> MAHINDRA RACING SPARK-MAHINDRA - MAHINDRA M3ELECTRO		0	29	25	12	3	10	3	4					86
4	<b>BUEMI S. (CHE)</b> RENAULT E.DAMS SPARK-RENAULT - RENAULT Z.E 16		0	1	21	15	15	0	8	10					70
5	<b>DI GRASSI L. (BRA)</b> ABT SCHAEFFLER AUDI SPORT SPARK-ABT SPORTSLINE - ABT SCHAEFFLER FE02		0	0	0	0	3	18	18	19					58
6	<b>ABT D. (DEU)</b> ABT SCHAEFFLER AUDI SPORT SPARK-ABT SPORTSLINE - ABT SCHAEFFLER FE02		11	0	1	0	25	0	13	6					56
7	<b>PIQUET JR. N. (BRA)</b> PANASONIC JAGUAR RACING SPARK-JAGUAR - JAGUAR I-TYPE 1		12	0	13	8	12	0	0	0					45
8	<b>EVANS M. (NZL)</b> PANASONIC JAGUAR RACING SPARK-JAGUAR - JAGUAR I-TYPE 1		0	15	0	6	8	12	2	0					43
9	<b>LOTTERER A. (DEU)</b> TECHEETAH SPARK-RENAULT - RENAULT Z.E 16		0	0	0	18	0	0	15	8					41
10	<b>TURVEY O. (GBR)</b> NEXTEV NIO SPARK-NEXTEV - NEXTEV TCR FORMULAE 002		0	8	0	0	18	6	0	2					34
11	<b>MORTARA E. (CHE)</b> VENTURI FORMULA E SPARK-VENTURI - VENTURI VM200-FE-02		6	18	0	0	4	0	1	0					29
12	<b>ENGEL M. (DEU)</b> VENTURI FORMULA E SPARK-VENTURI - VENTURI VM200-FE-02		0	6	0	0	0	1	4	12					23
13	<b>HEIDFELD N. (DEU)</b> MAHINDRA RACING SPARK-MAHINDRA - MAHINDRA M3ELECTRO		15	0	6	0	0	0	0	0					21
14	<b>LYNN A. (GBR)</b> DS VIRGIN RACING SPARK-CITROËN - VIRGIN DSV-02		4	2	2	0	1	8	0	0					17
15	<b>FELIX DA COSTA A. (PRT)</b> MS AMLIN ANDRETTI SPARK-ANDRETTI - ATEC-02		8	0	0	2	6	0	0	0					16
16	<b>J. LOPEZ (ARG)</b> DRAGON RACING SPARK-PENSKO - PENSKO 701-EV		-	-	8	0	0	5	0	1					14
17	<b>D'AMBROSIO J. (BEL)</b> DRAGON RACING SPARK-PENSKO - PENSKO 701-EV		0	0	0	4	0	2	6	0					12
18	<b>PROST N. (FRA)</b> RENAULT E.DAMS SPARK-RENAULT - RENAULT Z.E 16		2	4	0	1	0	0	0	0					7
19	<b>T. BLOMQVIST</b> MS&AD ANDRETTI FORMULA E		-	-	4	0	0	0	0	0					4
20	<b>FILIPPI I. (ITA)</b> NEXTEV NIO SPARK-NEXTEV - NEXTEV TCR FORMULAE 002		1	0	0	0	0	0	0	-					1
21	<b>KOBAYASHI K. (JPN)</b> MS AMLIN ANDRETTI SPARK-ANDRETTI - ATEC-02		0	0	-	-	-	-	-	-					0
22	<b>Q. MA (CHN)</b> NIO FORMULA E TEAM SPARK-NEXTEV - SPARK-NEXTEV - NEXTEV TCR		-	-	-	-	-	-	-	0					0
23	<b>JANI N. (CHE)</b> DRAGON RACING SPARK-PENSKO - PENSKO 701-EV		0	0	-	-	-	-	-	-					0

# FIA FORMULA E

## TEAMS STANDING

TEAM	HK	HK	MA	CL	MX	UR	IT	FR	DE	DE	CH	US	US	TOT.
1 <b>TECHEETAH</b>	21	12	10	46	10	28	25	36	-	-	-	-	-	<b>188</b>
2 <b>DS VIRGIN RACING</b>	29	12	17	11	1	23	25	15	-	-	-	-	-	<b>133</b>
3 <b>AUDI SPORT ABT SCHAEFFLER</b>	11	0	1	0	28	18	31	25	-	-	-	-	-	<b>114</b>
4 <b>MAHINDRA RACING</b>	15	29	31	12	3	10	3	4	-	-	-	-	-	<b>107</b>
5 <b>PANASONIC JAGUAR RACING</b>	12	15	13	14	20	12	2	0	-	-	-	-	-	<b>88</b>
6 <b>RENAULT E.DAMS</b>	2	5	21	16	15	0	8	10	-	-	-	-	-	<b>77</b>
7 <b>VENTURI FORMULA E TEAM</b>	6	24	0	0	4	1	5	12	-	-	-	-	-	<b>52</b>
8 <b>NIO FORMULA E TEAM</b>	1	8	0	0	18	6	0	2	-	-	-	-	-	<b>35</b>
9 <b>DRAGON RACING</b>	0	0	8	4	0	7	6	1	-	-	-	-	-	<b>26</b>
10 <b>MS&amp;AD ANDRETTI FORMULA E</b>	8	0	4	2	6	0	0	0	-	-	-	-	-	<b>20</b>

## 2017/2018 FIA FORMULA E CHAMPIONSHIP REGULATIONS

### CAR

- » Spark-Renault STR-01E single-seater / chassis: Dallara / batteries: Williams Engineering.
- » Maximum length x width x height: 5m x 1.8m x 1.25m / Minimum weight: 880kg.
- » Power unit: open / Maximum power (free practice and qualifying): 200kW (270hp) / Maximum power (race): 180kW (245hp). Maximum energy regeneration: 28kW/h / Motor allocation: two per season per driver.

### TYRES

- » Just one type of tyre (same pattern and construction) is authorised.
- » Allocation: five fronts and five rears per race.
- » An additional allocation of one set of so-

called Typhoon tyres per car per season for transport purposes. These tyres may be used in races in the case of very wet conditions.

- » Minimum tyre pressure: 1.6 bar (measured after the race). Tyres may only be inflated with air.
- » Tyre warmers are prohibited.

### RACE DAY FORMAT

- » **Shakedown:** may be organised the day before the race (power capped at 110kW).
- » **Free practice:** two sessions (45 minutes, then 30 minutes) on race day (maximum power: 200kW).
- » **Qualifying:** the drivers are divided into five groups by a draw. Each driver has a six-minute slot to complete a flying lap (maximum

power: 200kW). The five fastest drivers go on to take part in the SuperPole session.

- » **SuperPole:** the five fastest drivers from qualifying complete one flying lap each (in reverse order to qualifying results).
- » **Race:** Standing start / Duration: approximately 50 minutes / Maximum power: 180kW (plus temporary 100kJ boosts for the three 'FanBoost' drivers)
- » **Pit stops:** one pit stop mandatory to swap cars.
- » **FanBoost:** a temporary power boost (100kJ) for three drivers (for their second car) chosen after a vote by fans that closes six minutes after the start.

### POINTS-SCORING SYSTEM

#### RACE

- 1<sup>st</sup>: 25 points
- 2<sup>nd</sup>: 18 points
- 3<sup>rd</sup>: 15 points
- 4<sup>th</sup>: 12 points
- 5<sup>th</sup>: 10 points
- 6<sup>th</sup>: 8 points
- 7<sup>th</sup>: 6 points
- 8<sup>th</sup>: 4 points
- 9<sup>th</sup>: 2 points
- 10<sup>th</sup>: 1 point

- POLE POSITION** 3 points
- FASTEST RACE LAP** 1 point (if a top-10 finisher)

