

# RACECARD

**2018** QATAR AIRWAYS PARIS **E-PRIX**



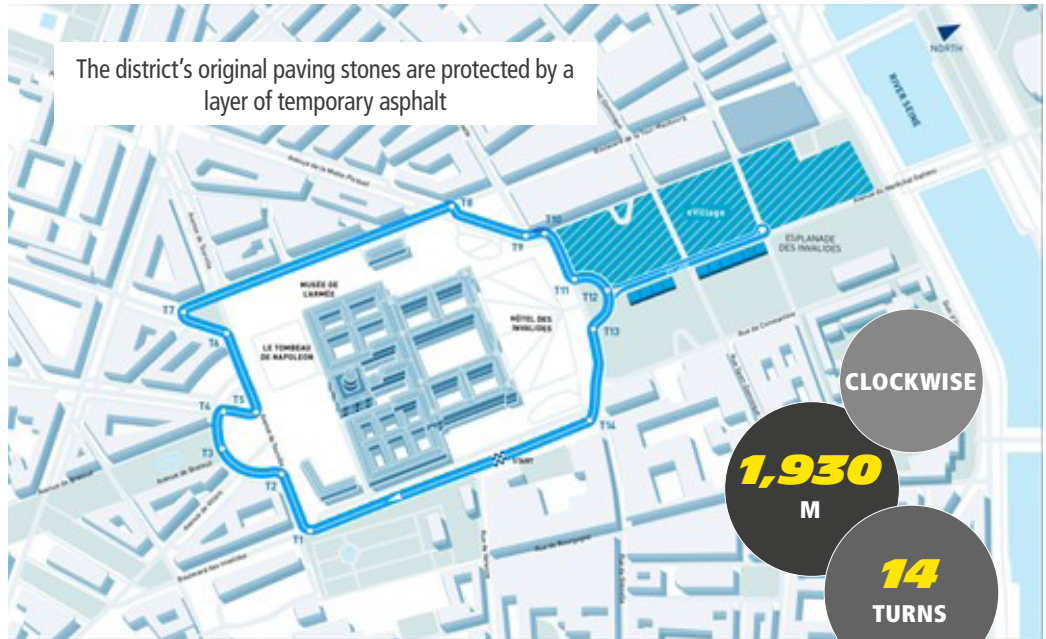
**SATURDAY  
APRIL 28  
2018**

QATAR AIRWAYS  
PARIS E-PRIX  
**ROUND 8:**  
2017/2018 ABB  
FIA FORMULA E  
CHAMPIONSHIP

PARIS  
FRANCE



## THE CIRCUIT CIRCUIT DES INVALIDES



The district's original paving stones are protected by a layer of temporary asphalt

CLOCKWISE

**1,930**  
M

**14**  
TURNS

## THE 2017 PARIS E-PRIX

### WINNER:

Sébastien Buemi  
(Renault e.dams/Michelin),  
49 laps in 59m41.12 (94.6kph)

### POLE POSITION:

Sébastien Buemi  
(Renault e.dams/Michelin),  
1m2.319s (110.9kph)

### FASTEST RACE LAP:

Sam Bird  
(DS Virgin Racing/Michelin),  
1m2.422 s (110.7kph)

Buemi's second win in two weeks



## THE 2018 PARIS E-PRIX

3rd running  
1 race (49 laps)



WATCH  
**JEAN-ERIC VERGNE'S**  
QATAR AIRWAYS PARIS E-PRIX  
PREVIEW

## TIMETABLE

### FRIDAY, APRIL 27

**5:00pm** 30 min. Shakedown

### SATURDAY, APRIL 28

**8:00am** 45 min. Free Practice 1

**10:30am** 30 min. Free Practice 2

**12:00noon** Qualifying

**12:45pm** SuperPole

**4:00pm** 49 laps Race

**5:00pm** Podium ceremony



## MICHELIN AND THE 2018 PARIS E-PRIX

- » Tyre: MICHELIN Pilot Sport EV2 (front: 245/40x18 / rear: 305/40x18)
- » Tyre allocation: 5 front and 5 rear tyres per driver

## THE 2018 PARIS E-PRIX

- » In 2016, the inaugural Paris E-Prix was the first race to take place inside the French capital since 1951
- » The 1951 Grand Prix Automobile de Paris in the neighbouring Bois de Boulogne park was won by Giuseppe Farina (Maserati)
- » As in Rome, a Bluecar electric cars public carsharing scheme operates in Paris (Autolib)
- » There are 22,308 battery-charging stations for electric and plug-in hybrid vehicles in France
- » Anne Hidalgo, the Mayor of Paris, is targeting zero internal combustion-engined vehicles in the city by 2030
- » The Paris Police recently acquired 13 electric cars
- » In 2017, 24,904 new electric vehicles were registered in France (up 13%)

## PARIS/HOTEL DES INVALIDES TRIVIA

- » Paris is often referred to as the City of Light
- » Paris is twinned with Rome which hosted the previous round of the Formula E Championship
- » The Hôtel National des Invalides was inaugurated in 1679. It housed a hospital and a church. Today, it is home to France's Army Museum and the tomb of Napoléon 1
- » The Esplanade des Invalides hosted the 1900 Exposition Universale where the all-electric Lohner-Porsche created a sensation
- » The Esplanade des Invalides is within easy walking distance of the French Parliament (Palais Bourbon), the Louvre, the Eiffel Tower and the Champs-Élysées
- » The population of the greater Paris region in 2017 stood at 6,999,097



"THE ASPHALT GIVES LITTLE GRIP"

## SERGE GRISIN

Formula E Championship Programme Manager, Michelin Motorsport

"The circuit forms a sort of rectangle around the Hôtel des Invalides monument, with rounded turns around the roundabouts. The layout doesn't really favour overtaking and the straight back to the start/finish line is very bumpy. The asphalt gives little grip, with the exception of the temporary coating laid over the original paving stones."

## MICHELIN AND THE 2018 PARIS E-PRIX

### TECHNICAL DATA

**PILOT SPORT EV2**  
FRONT: 245/40X18 &  
REAR: 305/40X18

Developed specifically for the FIA Formula E Championship  
The first 18-inch single-seater racing tyre

The first single-seater racing tyre capable of competing in dry and wet conditions

The first tyre capable of lasting an entire race meeting



<b>Size (front/rear)</b>	24/64-18 / 27/68-18
<b>Width (front/rear)</b>	245mm / 305mm
<b>Tread width (front/rear)</b>	240mm / 270mm
<b>Side wall height (front/rear)</b>	98mm / 122mm (i.e. 40 percent of tread width)
<b>Rim diameter</b>	18 inches
<b>Weight (front/rear)</b>	8.8kg / 10.9kg
<b>Type of tread pattern</b>	Asymmetric, non-directional
<b>Usage</b>	Circuits, street circuits, asphalt, concrete, wet or dry weather
<b>Number of tyres taken to each race</b>	200 (160 new tyres + 40 from the previous race)
<b>Weight saving (compared with the MICHELIN Pilot Sport EV)</b>	1.1kg front 1.4kg rear
<b>Weight saving per set of four tyres</b>	5kg (11 percent)
<b>Rolling resistance</b>	Lowered by 16 percent (equivalent to more than 2km, or one lap)



# 2018 PARIS E-PRIX

## ENTRY LIST

### AUDI SPORT ABT SCHAEFFLER



**LUCAS di Grassi** (BRA)

Wins: 6  
Podium: 23  
Pole position: 3



**Daniel Abt** (DEU)

Wins: 1  
Podium: 5  
Pole position: 1

### MS + ANDRETTI FORMULA E



**Antonio Felix Da Costa** (PRT)

Wins: 1  
Podium: 1  
Pole position: 0



**Kamui Kobayashi** (JPN)

Wins: 0  
Podium: 0  
Pole position: 0

### DS VIRGIN RACING



**Sam Bird** (GBR)

Wins: 7  
Podium: 13  
Pole position: 4



**Alex Lynn** (GBR)

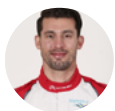
Wins: 0  
Podium: 0  
Pole position: 1

### DRAGON



**Jérôme d'Ambrosio** (BEL)

Wins: 2  
Podium: 6  
Pole position: 2



**José María López** (ARG)

Wins: 0  
Podium: 2  
Pole position: 0

### PANASONIC JAGUAR RACING



**Nelson Piquet Jr** (BRA)

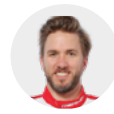
Wins: 2  
Podium: 5  
Pole position: 1



**Mitch Evans** (NZL)

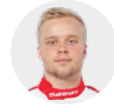
Wins: 0  
Podium: 1  
Pole position: 0

### MAHINDRA RACING



**Nick Heidfeld** (DEU)

Wins: 0  
Podium: 8  
Pole position: 0



**Felix Rosenqvist** (SWE)

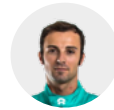
Wins: 3  
Podium: 7  
Pole position: 6

### NIO FORMULA E TEAM



**Oliver Turvey** (GBR)

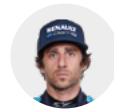
Wins: 0  
Podium: 1  
Pole position: 1



**Luca Filippi** (ITA)

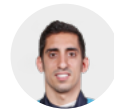
Wins: 0  
Podium: 0  
Pole position: 0

### RENAULT E.DAMS



**Nicolas Prost** (FRA)

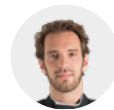
Wins: 3  
Podium: 5  
Pole position: 3



**Sébastien Buemi** (CHE)

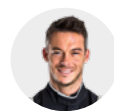
Wins: 12  
Podium: 20  
Pole position: 9

### TECHEETAH



**Jean-Eric Vergne** (FRA)

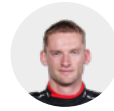
Wins: 3  
Podium: 11  
Pole position: 7



**André Lotterer** (DEU)

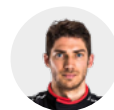
Wins: 0  
Podium: 2  
Pole position: 0

### VENTURI FORMULA E



**Maro Engel** (DEU)

Wins: 0  
Podium: 1  
Pole position: 0



**Edoardo Mortara** (CHE)

Wins: 0  
Podium: 1  
Pole position: 0





# FIA FORMULA E

## DRIVERS STANDING

															TOT.
		HK	HK	MA	CL	MX	UR	IT	FR	DE	DE	CH	US	US	
1	<b>VERGNE J. (FRA)</b> TECHEETAH SPARK-RENAULT - RENAULT Z.E 16		21	12	10	28	10	28	10						119
2	<b>BIRD S. (GBR)</b> DS VIRGIN RACING SPARK-CITROËN - VIRGIN DSV-02		25	10	15	11	0	15	25						101
3	<b>ROSENQVIST F. (SWE)</b> MAHINDRA RACING SPARK-MAHINDRA - MAHINDRA M3ELECTRO		0	29	25	12	3	10	3						82
4	<b>BUEMI S. (CHE)</b> RENAULT E.DAMS SPARK-RENAULT - RENAULT Z.E 16		0	1	21	15	15	0	8						60
5	<b>ABT D. (DEU)</b> ABT SCHAEFFLER AUDI SPORT SPARK-ABT SPORTSLINE - ABT SCHAEFFLER FE02		11	0	1	0	25	0	13						50
6	<b>PIQUET JR. N. (BRA)</b> PANASONIC JAGUAR RACING SPARK-JAGUAR - JAGUAR I-TYPE 1		12	0	13	8	12	0	0						45
7	<b>EVANS M. (NZL)</b> PANASONIC JAGUAR RACING SPARK-JAGUAR - JAGUAR I-TYPE 1		0	15	0	6	8	12	2						43
8	<b>DI GRASSI L. (BRA)</b> ABT SCHAEFFLER AUDI SPORT SPARK-ABT SPORTSLINE - ABT SCHAEFFLER FE02		-	-	0	0	3	18	18						39
9	<b>LOTTERER A. (DEU)</b> TECHEETAH SPARK-RENAULT - RENAULT Z.E 16		-	-	0	18	0	0	15						33
10	<b>TURVEY O. (GBR)</b> NEXTEV NIO SPARK-NEXTEV - NEXTEV TCR FORMULAE 002		0	8	0	0	18	6	0						32
11	<b>MORTARA E. (CHE)</b> VENTURI FORMULA E SPARK-VENTURI - VENTURI VM200-FE-02		6	18	0	0	4	0	1						29
12	<b>HEIDFELD N. (DEU)</b> MAHINDRA RACING SPARK-MAHINDRA - MAHINDRA M3ELECTRO		15	0	6	0	0	0	0						21
13	<b>LYNN A. (GBR)</b> DS VIRGIN RACING SPARK-CITROËN - VIRGIN DSV-02		4	2	2	0	1	8	0						17
14	<b>FELIX DA COSTA A. (PRT)</b> MS AMLIN ANDRETTI SPARK-ANDRETTI - ATEC-02		8	0	0	2	6	0	0						16
15	<b>J. LOPEZ (ARG)</b> DRAGON RACING SPARK-PENSKER - PENSKER 701-EV		-	-	8	0	0	5	0						13
16	<b>D'AMBROSIO J. (BEL)</b> DRAGON RACING SPARK-PENSKER - PENSKER 701-EV		0	0	0	4	0	2	6						12
17	<b>ENGEL M. (DEU)</b> VENTURI FORMULA E SPARK-VENTURI - VENTURI VM200-FE-02		0	6	0	0	0	1	4						11
18	<b>PROST N. (FRA)</b> RENAULT E.DAMS SPARK-RENAULT - RENAULT Z.E 16		2	4	0	1	0	0	0						7
19	<b>T. BLOMQUIST</b> MS&AD ANDRETTI FORMULA E		-	-	4	0	0	0	0						4
20	<b>FILIPPI I. (ITA)</b> NEXTEV NIO SPARK-NEXTEV - NEXTEV TCR FORMULAE 002		1	0	0	0	0	0	0						1
21	<b>KOBAYASHI K. (JPN)</b> MS AMLIN ANDRETTI SPARK-ANDRETTI - ATEC-02		0	0	-	-	-	-	-						0
22	<b>JANI N. (CHE)</b> DRAGON RACING SPARK-PENSKER - PENSKER 701-EV		0	0	-	-	-	-	-						0

# FIA FORMULA E

## TEAMS STANDING

															TOT.
		HK	HK	MA	CL	MX	UR	IT	FR	DE	DE	CH	US	US	
1	TECHEETAH	21	12	10	46	10	28	25	-	-	-	-	-	-	152
2	DS VIRGIN RACING	29	12	17	11	1	23	25	-	-	-	-	-	-	118
3	MAHINDRA RACING	15	29	31	12	3	10	3	-	-	-	-	-	-	103
4	AUDI SPORT ABT SCHAEFFLER	11	0	1	0	28	18	31	-	-	-	-	-	-	89
5	PANASONIC JAGUAR RACING	12	15	13	14	20	12	2	-	-	-	-	-	-	88
6	RENAULT E.DAMS	2	5	21	16	15	0	8	-	-	-	-	-	-	67
7	VENTURI FORMULA E TEAM	6	24	0	0	4	1	5	-	-	-	-	-	-	40
8	NIO FORMULA E TEAM	1	8	0	0	18	6	0	-	-	-	-	-	-	33
9	DRAGON RACING	0	0	8	4	0	7	6	-	-	-	-	-	-	25
10	MS&AD ANDRETTI FORMULA E	8	0	4	2	6	0	0	-	-	-	-	-	-	20

## 2017/2018 FIA FORMULA E CHAMPIONSHIP REGULATIONS

### CAR

- » Spark-Renault STR-01E single-seater / chassis: Dallara / batteries: Williams Engineering.
- » Maximum length x width x height: 5m x 1.8m x 1.25m / Minimum weight: 880kg.
- » Power unit: open / Maximum power (free practice and qualifying): 200kW (270hp) / Maximum power (race): 180kW (245hp). Maximum energy regeneration: 28kW/h / Motor allocation: two per season per driver.

### TYRES

- » Just one type of tyre (same pattern and construction) is authorised.
- » Allocation: five new fronts and five new rears per race.

- » An additional allocation of one set of so-called Typhoon tyres per car per season for transport purposes. These tyres may be used in races in the case of very wet conditions.
- » Minimum tyre pressure: 1.6 bar (measured after the race). Tyres may only be inflated with air.
- » Tyre warmers are prohibited.

### RACE DAY FORMAT

- » **Shakedown:** may be organised the day before the race (power capped at 110kW).
- » **Free practice:** two sessions (45 minutes, then 30 minutes) on race day (maximum power: 200kW).
- » **Qualifying:** the drivers are divided into five groups by a draw. Each driver has a six-minute slot to complete a flying lap (maximum power: 200kW). The five fastest drivers go on to take part in the SuperPole session.

nute slot to complete a flying lap (maximum power: 200kW). The five fastest drivers go on to take part in the SuperPole session.

- » **SuperPole:** the five fastest drivers from qualifying complete one flying lap each (in reverse order to qualifying results).
- » **Race:** Standing start / Duration: approximately 50 minutes / Maximum power: 180kW (plus temporary 100kJ boosts for the three 'FanBoost' drivers)
- » **Pit stops:** one pit stop mandatory to swap cars.
- » **FanBoost:** a temporary power boost (100kJ) for three drivers (for their second car) chosen after a vote by fans that closes six minutes after the start.

### POINTS-SCORING SYSTEM

#### RACE

- 1<sup>st</sup>: 25 points
- 2<sup>nd</sup>: 18 points
- 3<sup>rd</sup>: 15 points
- 4<sup>th</sup>: 12 points
- 5<sup>th</sup>: 10 points
- 6<sup>th</sup>: 8 points
- 7<sup>th</sup>: 6 points
- 8<sup>th</sup>: 4 points
- 9<sup>th</sup>: 2 points
- 10<sup>th</sup>: 1 point

- POLE POSITION 3 points
- FASTEST RACE LAP 1 point (if a top-10 finisher)

