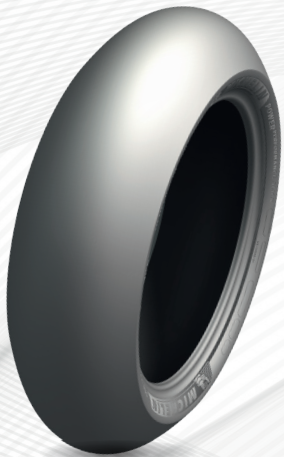




**DELIVERING RACE-WINNING PACE HOUR AFTER HOUR!**

# MICHELIN POWER PERFORMANCE 24



## REAR TYRE ONLY



**Tyres not approved for road use**



**Tyres developed for endurance racing**



**Tyre warmers must be used**



### LONG-LASTING STINTS

The rear tyre has been developed to last for 2 stints\* in Endurance racing.

- The technologies present stem from our experience in **MOTOGP™**.



### PERFORMANCE MADE TO LAST

The tyre delivers consistent performance, stint after stint\*.

- Consistence achieved thanks to a footprint that is uniform over the various camber phases.



### WARM-UP

The tyre provides the grip needed from the first lap.

- The materials used allow the rubber to warm up quickly.
- It benefits from the latest technologies developed in **MOTOGP™**.



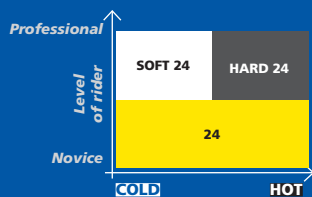
### EASY COMPOUND SELECTION

- Two rubber compounds **SOFT 24 & HARD 24** mainly used in the EWC
- A **24** compound that is more versatile, mainly used in national endurance championships.

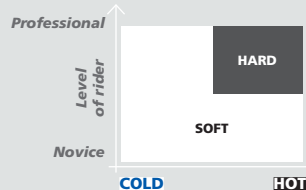
## SIZES & COMPOUNDS



**REAR 200/55 R 17 & 200/60 R 17**



Combine the rear MICHELIN POWER PERFORMANCE 24 with a 120/70 R 17 MICHELIN POWER PERFORMANCE SLICK on the front. Choose the compound according to the conditions of use below:



\* Internal study carried out at Slovakia Ring, July 2019, Yamaha R1 & BMW S1000 RR.  
[www.michelinmotorsport.com](http://www.michelinmotorsport.com)

