

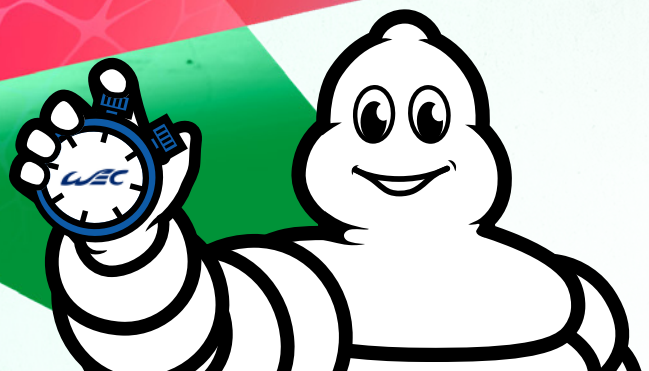
RACEGUIDE **2026**



6 HOURS OF IMOLA

APRIL 17-19

#01



2026 TIMETABLE

FRIDAY, APRIL 17

10:15am
> 11:45pm **Free Practice 1**

3:15pm
> 4:45pm **Free Practice 2**

SATURDAY, APRIL 18

10:30am
> 11:30am **Free Practice 3**

3:10pm
> 3:22pm **Hypercar
Qualifying**

3:30pm
> 3:40pm **Hypercar
Hyperpole**

SUNDAY, APRIL 19

1:00pm Start



LOCAL TIME • Source: fiafec.com
information subject to change

**35
ENTRIES**

**17
HYPERCARS**

**8
DIFFERENT
MANUFACTURERS**

THE 2026 6 HOURS OF IMOLA

102nd FIA WEC RACE



First round of 2026 following the Qatar 1812KM's postponement

Ferrari won its home race in 2025 and returns this year as the defending world champion

Toyota's 100th FIA WEC race on Michelin tires

FIA WEC Hypercar debut for the Genesis Magma GMR-001



STATISTIC

The 2026 6 Hours of Imola is Toyota's 100th FIA WEC appearance in association with Michelin. Together, they are seeking a 50th world-class win. Indeed, since Le Mans 2012, Michelin-equipped Toyotas have won practically one round in two with the TS030 Hybrid and TS040 Hybrid (5 victories each), the TS050 Hybrid (19) and the GR010 Hybrid (20). The new TR010 Hybrid is making its debut this weekend at Imola.

AUTODROMO INTERNAZIONALE ENZO E DINO FERRARI



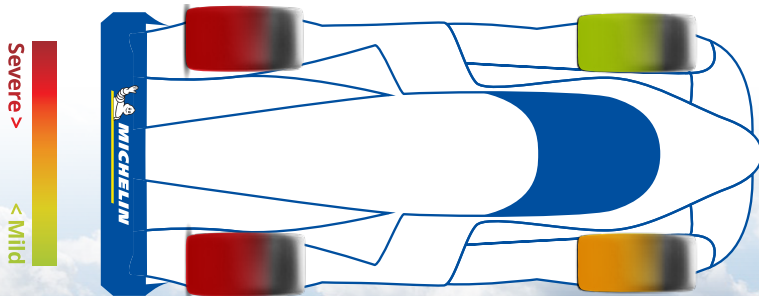
» HILLY, NARROW (14 METERS) 'OLD SCHOOL' CIRCUIT

» THE HARDEST CORNER ON TIRES (LEFTS) IS THE ACQUE MINERALI SEQUENCE (TURNS 11>13)

» IMOLA'S ASPHALT TRANSMITS LITTLE ENERGY TO THE HYPERCARS' TIRES

4.909KM / **21 TURNS** / **ANTICLOCKWISE**

TIRE SEVERITY RATING



Third-fastest FIA WEC circuit in terms of average speed: **193kph**

Front/rear split of constraints on tires: **44%/56%**

Highest load: **1,000 kg** (on front and rear lefts) through Turns 11/12/13



THE 2025 RACE



WINNERS

PIER GUIDI/CALADO/GIOVINAZZI
(Ferrari 499P 🇮🇹), 212 laps (173.2kph)

FASTEST LAP

ANTONIO FUOCO (Ferrari 499P 🇮🇹), ⌚ 1m32.504s (190.8kph)

FASTEST RACE LAP

ANTONIO FUOCO (Ferrari 499P 🇮🇹), ⌚ 1m31.794s (192.5kph)

TOP SPEED

ANTONIO FUOCO (Ferrari 499P 🇮🇹),
STOFFEL VANDOORNE (Peugeot 9X8 🇧🇪) **321.4kph**



Victory on home soil, plus pole-position and fastest race-lap for the Ferrari 499P

Three different makes (Ferrari, BMW and Alpine) on the podium

Entertaining race marked by a close fight between the #8 Toyota and #50 Ferrari; two Safety Car interruptions

Michelin's partner teams ran combinations of its medium and soft compounds

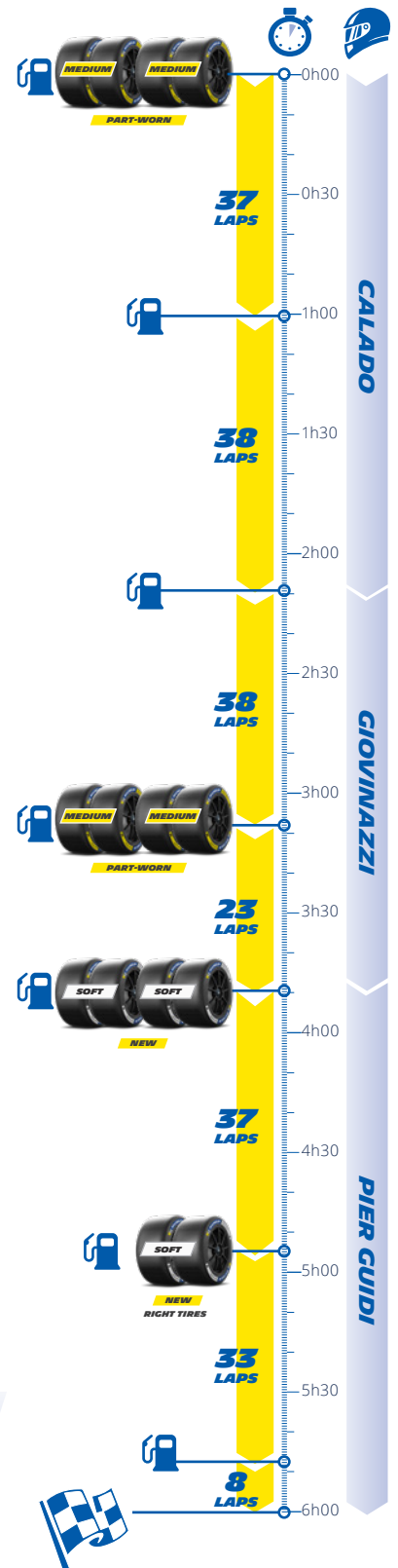
All 18 Hypercars reached the finish

Maximum distance
on same tires (Ferrari #51)



594KM
57% of the race

THE WINNERS' STRATEGY



PIERRE ALVES

(Manager, Endurance Racing Programs, Michelin Motorsport)



The early part of this year's FIA WEC calendar has been revised following the Qatar 1812KM's postponement until late-October due to the Middle-East conflict. Changes include a new date for the Prologue test which will finally provide eight hours of running time just prior to the season's opener at Imola. This will help us to obtain a precise evaluation of the performance, warm-up characteristics and consistency of our new soft and medium Pilot Sport Endurance slicks which

// **THE CAPACITY OF TIRES TO MULTI-STINT HAS BECOME A KEY PARAMETER** //

contain 50 percent renewable and recycled raw materials. Autodromo di Imola Enzo e Dino Ferrari is not a high-energy track when it comes to tires, in spite of the repeated high loads to which they are submitted under acceleration. Overtaking isn't easy so the emphasis promises to be on strategy. The capacity of tires to multi-stint has become a key parameter in order to save time during pit stops. At this time of year, the weather in Italy's Emilia-Romagna region can be changeable, so that might have a big influence on strategy.



MICHELIN'S FIA WEC RECORD

101
WINS

WITH 6 DIFFERENT MANUFACTURERS
including Toyota (49 wins), Porsche (21) and Audi (17)

WITH 57 DIFFERENT DRIVERS
including S. Buemi (26), B. Hartley (23) and M. Conway (19)

13
MANUFACTURERS'
WORLD TITLES

13
DRIVERS'
TITLES





THE MICHELIN PILOT SPORT ENDURANCE

Easy to spot thanks to its stand-out Vision graphics, the new MICHELIN Pilot Sport Endurance contains 50 percent renewable or recycled raw materials. The range comprises three slicks – soft (white sidewall marking), medium (yellow) and hard (red) – plus a rain tire (blue).

Following its nomination by the ACO (Automobile Club de l'Ouest) and FIA (Fédération Internationale de l'Automobile) as supplier for endurance racing's Hypercar prototypes, Michelin used advanced simulation technology to develop a bespoke Pilot Sport Endurance range in 2020. These tires made their race debut in May 2021 at Belgium's 6 Hours of Spa-Francorchamps.

After introducing a number of evolutions such as new sizes, Michelin began to work on an all-new range that contains 50 percent renewable/recycled materials, including rice husk, natural and recycled rubber, and recycled steel.

On completion of a two-year development and testing period, these tires are making their competitive debut in this year's FIA WEC.

Not only are they more sustainable, but they also deliver enhanced performance thanks to the work of Michelin Motorsport's

engineers on their warm-up characteristics and longevity. This is in response to the championship's regulations which ban tire-warming devices, as well as to mandatory double/triple-stinting due to smaller tire allowances per race.

With the exception of the Le Mans 24 Hours where all three compounds may be used, the number of different MICHELIN Pilot Sport Endurance slick specifications allowed per FIA WEC meeting is restricted to two.

Meanwhile, only one type of wet weather tire is authorized for the season. As a consequence, it needs to be capable of covering conditions ranging from damp or drying tracks to heavy rain.

Michelin is the sole tire supplier for the Hypercar prototypes (LMH, LMDh, hybrid, non-hybrid) which all run 29/71-18 and 34/71-18 front and rear Pilot Sport Endurances respectively.



THE MICHELIN PILOT SPORT ENDURANCE AT IMOLA

SLICKS



SOFT



Soft compound
Dry or slightly damp conditions
Low temperatures



MEDIUM



Hard compound
Dry conditions
High track temperatures
Big constraints

Only two slicks specifications available (three for Le Mans)

Tire warming systems may not be used

Compound for the Hyperpole session: soft

RAIN TIRES



WET

Soft compound
Wet conditions
Versatile

A single type of rain tire

SLICKS ALLOCATION

FREE PRACTICE	12 TIRES
HYPERPOLE	4 TIRES
QUALIFYING + RACE	18 TIRES

SIZES: FRONT: 29/71-18 • REAR: 34/71-18

Width (cm) / Exterior Diameter (cm) - Interior Diameter (inches)

TECHNICAL REQUIREMENTS

	PRESSURE	CAMBER
FRONT	1.8 bar (26.1psi) minimum	Between -1.0° and -3.0°
REAR	1.8 bar (26.1psi) minimum	Between -1.0° and -2.3°



17 HYPERCAR PROTOTYPES REPRESENTING 8 MANUFACTURERS

ASTON MARTIN THOR TEAMASTON
MARTIN
VALKYRIE
AMR (LMH)Power unit: 6.5-liter
normally-aspirated V12
Power: 500kWFront-wheel drive propulsion
Seven-speed Xtrac sequential
gearbox

#007


 H. TINCKNELL
 T. GAMBLE

#009


 A. RIBERAS
 M. SORENSEN
TOYOTA RACINGTOYOTA
TRO10
(LMH)Power unit: 3.5-liter V6 bi-turbo +
Toyota Hybrid System (front wheels)
Power: 500kW + 200kWFour-wheel drive
Seven-speed Xtrac
sequential gearbox

#7


 M. CONWAY
 K. KOBAYASHI
 N. DE VRIES

#8


 S. BUEMI
 B. HARTLEY
 R. HIRAKAWA
BMW M TEAM WRTBMW M
HYBRID V8
(LMDH)Power unit: 4-liter V8 bi-turbo +
Bosch MGU (rear wheels)
Power: 477kW + 50kWTwo-wheel drive
Seven-speed Xtrac
sequential gearbox

#15


 R. MARCIELLO
 K. MAGNUSSEN

#20


 R. RAST
 R. FRIJNS
GENESIS MAGMA RACINGGENESIS
GMR-001Power unit: 3,2l V8 Turbo
+ Bosch MGU Bosch (rear wheels)
Power: 500kWTwo-wheel drive
Seven-speed sequential
gearbox

#17


 A. LOTTERER
 P. DERANI
 M. JAUBERT

#19


 P-L. CHATIN
 M. JAMINET
 D. JUNCADILLA
ALPINE ENDURANCE TEAMALPINE
A424
(LMDH)Power unit: 3.4-liter V6 turbo
+ Bosch MGU (rear wheels)
Power: 500kW + 50kWTwo-wheel drive
Seven-speed Xtrac
sequential gearbox

#35

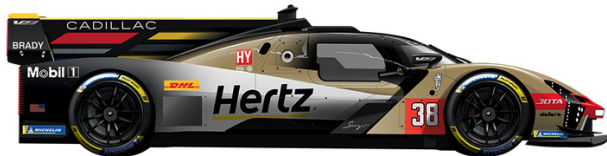

 A-F. DA COSTA
 C. MILESI
 F. HABSBERG

#36


 J. GOUNON
 F. MAKOWIECKI
 V. MARTINS

CADILLAC HERTZ TEAM JOTA

CADILLAC
V-SERIES.R
(LMDH)



Power unit: 5.5-liter V8 + Bosch
MGU (rear wheels)
Power: 500kW + 50kW



Two-wheel drive
Seven-speed Xtrac
sequential gearbox

#12



N. NATO
 W. STEVENS

#38



E. BAMBER
 S. BOURDAIS

FERRARI AF CORSE

FERRARI
499P
(LMH)



Power unit: 3-liter V6 bi-turbo +
hybrid system (front wheels)
Power: 500kW + 200kW



Four-wheel drive
Seven-speed Xtrac
sequential gearbox

#50



A. FUOCO
 M. MOLINA
 N. NIELSEN

#51



A. PIER GUIDI
 J. CALADO
 A. GIOVINAZZI

AF CORSE

FERRARI
499P
(LMH)



Power unit: 3-liter V6 bi-turbo
+ hybrid system (front wheels)
Power: 500kW + 200kW



Four-wheel drive
Seven-speed Xtrac
sequential gearbox

#83



R. KUBICA
 Y. YE
 P. HANSON

PEUGEOT TOTAL ENERGIES

PEUGEOT
9X8
(LMH)



Power unit: 2.5-liter V6 bi-turbo +
Peugeot MGU (front wheels)
Power: 500kW + 200kW



Four-wheel drive
Seven-speed Sadev
sequential gearbox

#93



N. CASSIDY
 P. DI RESTA
 S. VANDORNE

#94



L. DUVAL
 M. JAKOBSEN
 T. POURCHAIRE



2026 CALENDAR

R1 6 HOURS OF IMOLA
 (Italy) April 19

R2 6 HOURS OF SPA-FRANCORCHAMPS
 (Belgium) May 9

R3 LE MANS 24 HOURS
 (France) June 13-14

R4 6 HOURS OF SAO PAULO
 (Brazil) July 12

R5 LONE STAR LE MANS
 (Texas, USA) September 6

R6 6 HOURS OF FUJI
 (Japan) September 27

R7 QATAR 1812 KM
 (Qatar, Lusail) October 24

R8 8 HOURS OF BAHRAIN
 (Sakhir) November 8



FIA WEC TIRE REGULATIONS

SPECIFICATIONS

Number of specifications for dry-weather tires			Number of specifications for wet-weather tires
Le Mans 24 Hours	Other races	Total over the season	
3	2	3	1

HYPERCAR ALLOCATION

The maximum number of dryweather tires that can be used during a Competition is defined as follows:

Free Practice	Hyperpole*	Qualifying + Race		
		6-hour races	8-hour races	10-hour races*
12	4	18	26	32

- For free practice sessions, from the beginning of the practice sessions.
- For the qualifying session and the race, from the start of the qualifying session.
- For the Hyperpole from the start of the session. Tires allocated for Hyperpole must be used only and exclusively for the Hyperpole session.
- To go from the pit lane to the starting grid before the start of the race, the tires used can be either dry-weather tires or wetweather tires and will not be counted in the allocation.
- At the start of a Competition, any dry weather tires used must be new.

WET-WEATHER TIRES

The tread and profile of the tires must not be modified or recut.

Under exceptional circumstances, upon request of the tire manufacturer, the Stewards may grant a derogation for the tire manufacturer to recut the wet-weather tire specification. This modification will be exclusively

allowed for one Competition, done by the tire manufacturer, under the condition that the tire manufacturer will supply all the Competitors with the same number of tires with the same modification (cutting pattern to be submitted to the ACO/FIA beforehand) at the same time..

OTHER FACTS

Any process that involves a direct or indirect attempt at modifying the temperature of a tire (compared to the ambient temperature) is forbidden.

Use of storage tents in designated areas is permitted only if they are always ventilated with ambient air and accessible.

Infringement of the tire allowance: Stop & Go of 2 minutes per tire.

Infringement of the tire heating rules: Stop & Go of 3 minutes during the race.

Four mechanics and two tire guns allowed for wheel changes during pit stops. Wheel changes are only allowed when the car is not being refueled.

Only one tire technician is allowed to measure tire temperatures and pressures.

Tire changes may only be carried out on the starting grid up to the five-minute board, in front of the garage or inside the garage if significant work is being undertaken on the car, on the track in the case of a suspension of the race.

Each tire must be identified by RFID and barcode. All references must be declared to the Technical Delegate at least 48 hours before the start of the Competition.

**BUILT TO LAST,
MADE TO PERFORM**



MICHELIN PILOT SPORT RANGE :
MICHELIN MOTORSPORT EXPERTISE CRAFTED FOR
YOUR DAILY JOURNEYS, DELIVERING PRECISE HANDLING AND PERFORMANCE.



MICHELIN MOTORSPORT
36 rue du Clos Four
63100 Clermont-Ferrand - France

Information correct at date of publication - 02/2026
MFP Michelin 855 200 507 RCS CLERMONT-FERRAND. Share capital: 504 000 004€.
Nouveau Monde 387 471 485 R.C.S. Lyon - SEPPA 982 429 425 R.C.S. Bordeaux - Photo credit: © Michelin

